

M-OBR4 Series

MODEL M-OBR4

RECESSED OUTDOOR BOTTLE FILLER

STANDARD FEATURES

- 115v Plug-in transformer
- Pushbutton and hands free sensor operated bottle filler
- 100 mesh inlet strainer
- Laminar flow water supply
- 1.0 GPM fill rate
- Lead-free
- Lead and cyst filter for bottle filler
- Meets ADA forward and side reach requirements
- Vandal-resistant design
- Gasketed door for weather resistance
- Resistant to sunlight, heat, moisture and wear
- 120 VAC/9 VDC plug-in Transformer

SUGGESTED SPECIFICATIONS

Model M-OBR4 is a Recessed outdoor bottle filler. Housing has a slim and trim look that blends into your environment. Unit also has a strong vandal-resistant design for years of trouble-free service. Bottle filler shall be activated by a 9 volt sensor or a pushbutton as standard. Fixture has a self-closing pushbutton, needing less than 5 pounds of force which shall activate the internally mounted valve. When installed properly, the bottle filler complies with ADA forward and side reach requirements. Bottle filler is fabricated of type 304 stainless steel. Unit complies with ANSI A117.1, Public Law 111-380 (NO-LEAD) and NSF/ANSI/CAN 61.

INSTALLATION NOTES: Refer to installation detail to ensure fixture Mounting Channel is compatible with wall construction type. P-trap waste, water supply connection and electrical receptacle are located behind the wall. Models with -BAT or -MO options will not require electrical.

NOTE: For model with -FRA1 Freeze Resistance refer to M-OBA4



MODEL:

(Must Specify)

- | | |
|---------------------------------|--------------------------------|
| <input type="checkbox"/> M-OBR4 | Satin stainless finish (Shown) |
| <input type="checkbox"/> M-OBR5 | Green powder-coated |
| <input type="checkbox"/> M-OBR6 | Red powder-coated |
| <input type="checkbox"/> M-OBR7 | Blue powder-coated |
- Custom color finishes available upon request*

OPTIONS

(additional costs may be incurred)

- | | |
|--------------------------------|--------------------------------------------------------------------------------------------|
| <input type="checkbox"/> -BAT | Battery operated
(N/A with bottle counter) |
| <input type="checkbox"/> -BCD | Bottle counter display
(Not available with -BAT or -MO) |
| <input type="checkbox"/> -LOGO | Customer specified logo |
| <input type="checkbox"/> -MO | Bottle filler operated by pushbutton only
(No Electrical Required) |
| <input type="checkbox"/> | A9100080-A 8 GPH remote water chiller
(Locate on interior wall, not exposed to weather) |

Complies with the following standards:



Federal Public Law 111-380 (No Lead)



NSF/ANSI/CAN 61



Recyclable Product



Water Conserving Product

Product Warranty

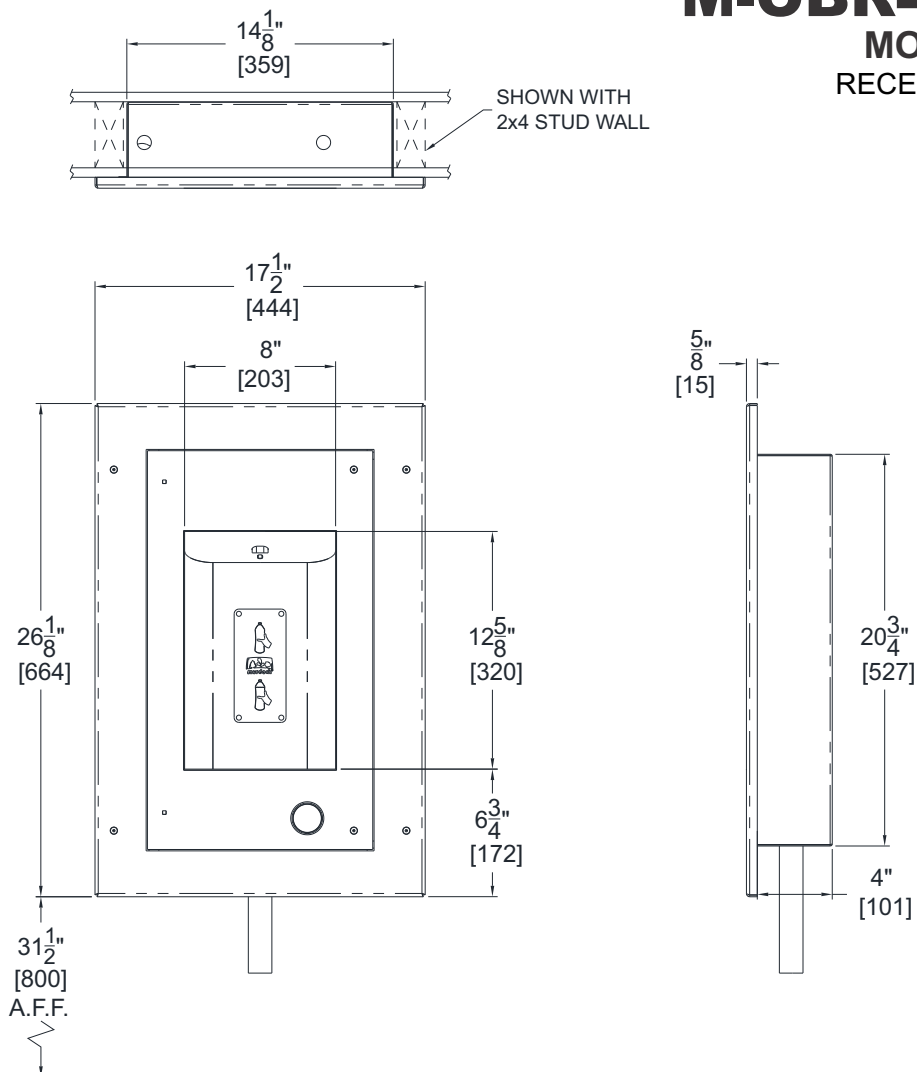
WARNING: Cancer and Reproductive Harm - www.P65Warnings.ca.gov

MURDOCK MFG. • 15125 Proctor Avenue • City of Industry, CA 91746 USA
Phone 800-453-7465 or 626-333-2543 • www.murdockmfg.com

Member of
MORRIS GROUP INTERNATIONAL

MOBR4

M-OBR4 Series MODEL M-OBR4 RECESSED OUTDOOR BOTTLE FILLER



GENERAL NOTES:

1. ALL DIMENSIONS ARE IN INCHES [MM]
- *2. DIMENSIONS SHOWN ARE FOR RECOMMENDED ADULT HEIGHT. ADJUST VERTICAL DIMENSIONS NECESSARY TO COMPLY WITH FEDERAL, STATE & LOCAL CODES.
3. STOP VALVE NOT PROVIDED

SELECTION SUMMARY & APPROVAL FOR MANUFACTURING	Model Number & Options _____	Quantity _____	<p><i>All dimensions are subject to manufactures tolerance of plus or minus 1/4" nominal and subject to change without notice. Murdock® assumes no responsibility for use of void or superseded data. Dimensions may change with the addition of optional accessories. Murdock® Mfg., Member of Morris Group International®, Please visit www.murdockmfg.com for most current specifications.</i></p>
	Company _____		
	Contact _____	Title _____	
	Signature (Approval for Manufacturing) _____		
	Date _____		