



MODEL NO. GYQ87

# DRINKING FOUNTAINS

Bottle Fillers, Pet Fountains & Showers



MODEL NO. M-23B-PFS



MODEL NO. GSD75-BP6



MODEL NO. M-C76B-PF

# TABLE OF CONTENTS

Custom Colors, Logos and Graphics ..... 3

Cast Iron Products..... 4-10

Unique Series..... 11

Fabricated Stainless Steel Outdoor Bottle Fillers..... 12-13

Pet Fountains ..... 14-17

Fabricated Stainless Steel Contemporary Drinking Fountains ..... 17-21

Concrete Contemporary Drinking Fountains ..... 22-23

Pool and Beach Showers..... 24-25

Special Applications..... 26

Safewater™ ..... 27



Since 1853, Murdock® Manufacturing has been a benchmark in the water industry. As early as 1858, while most people were drawing water from common wells, Murdock was manufacturing and installing frost-free water hydrants throughout the Midwest.

For the Murdock story, visit [www.murdockmfg.com](http://www.murdockmfg.com)

## Outdoor

### BOTTLE FILLERS, DRINKING FOUNTAINS & PET FOUNTAINS

Murdock's Outdoor Bottle Fillers, Drinking Fountains and Pet Fountains include classic and modern styles constructed from durable materials like cast iron, stainless steel, brass and concrete.

With an array of options in body style, number of stations, custom colors, logos, graphics and finishes, our outdoor hydration stations can be customized to suit parks, golf courses, sports fields and more.



Customized  
MODEL NO. GYV34



Customized  
MODEL NO. GYM74

Customized  
MODEL NO. GYQ84

### CUSTOM COLORS, LOGOS & GRAPHICS

Looking for a specific color to match an existing wall or team color? No problem.

Murdock has the unique ability to match all Drinking Fountains and Bottle Fillers to any Pantone® color swatch.



Customized MODEL NO.  
M-OB4-GRD



Customized  
MODEL NO.  
GSJ95



Customized  
MODEL NO.  
GRF35

### COMMERCIAL BRANDING AND LOGOS

Enhance your brand with Murdock hydration stations customized with your company logo! We have the ability to match any Murdock Drinking Fountain and Bottle Filler with all signature brands, graphic designs and logos.

# Classic DESIGN SERIES

## Year-Round Freeze-Resistant

Our Classic Series is based on original Murdock fountain construction. With its distinctive, tulip filigree-style pedestal and brass polished bowl and bubbler, this popular design affords beauty and durability that lasts a lifetime.

Our original M-1776 Old Style fountain is still pedal-operated and is as reliable as it was over a century ago. The rest of the classic series now includes fountains with pushbutton activation and other updated features. Constructed of heavy-duty gray iron and brass, these fountains are the perfect addition to any theme or historic setting.



**M-C76C**  
Single Height

- 19th century old style design
- One bowl, single arm combination
- Beautiful and accessible
- Available in freeze-resistant model (M-C76A-FRU1)



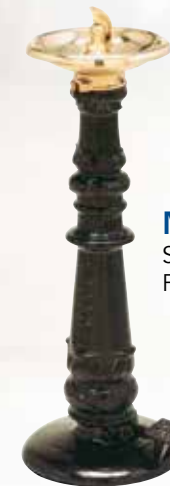
Paper boys take a well-deserved break



**M-C76B**  
Barrier-Free,  
Dual Height



**M-C76A**  
Barrier-Free,  
Single Height



**M-1776**  
Single Height with  
Foot Pedal



**M-C76B-PF**  
Barrier-Free,  
Dual Height,  
Pushbutton  
Pet Fountain



# Architectural SERIES

## Seasonal

Murdock's Architectural Series of fountains are the industry standard in providing drinking fountain accessibility for everyone. All models in this series are ADA compliant.

Architectural Series fountains are constructed with solid brass bowls and a heavy cast iron body and base. Heavy-duty construction ensures durability and field-serviceable components are easily accessible. All inner parts are removable for convenient above-grade maintenance.

All models in this series feature pushbutton operation and can be made freeze-resistant by adding -FRU after the desired model number.



**M-43A**  
Barrier-Free,  
Single Height



**M-53W**  
Barrier-Free, Single  
Height, Wall-Mounted  
Drinking Fountain



**M-43A-PF**  
Barrier-Free, Single  
Height, Pushbutton  
Pet Fountain



**M-43A-CH30**  
Barrier-Free, Child and  
Adult ADA Heights



# Select **SERIES** Seasonal

The Select Series features design simplicity. Fountains are constructed from heavy duty cast iron bases and solid brass, powder coated bowls. The select series features a number of ADA compliant models for easy accessibility. Models in this series are available in brown, black and green.

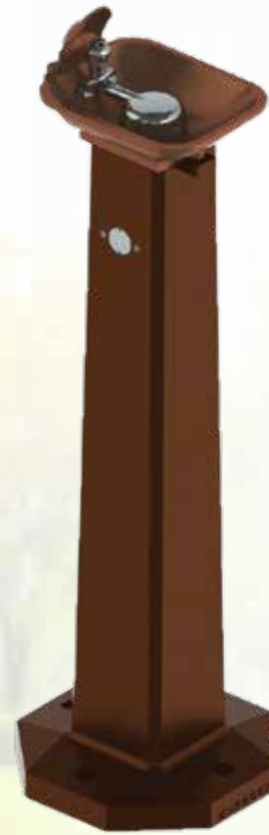


**M-23B-PFS**  
Square Single Arm  
Barrier-Free, Dual Height,  
Spigot Pet Fountain



**-FRU2**  
Year-Round Freeze-Resistant

**-CH30**  
Child Height (30" from  
grade to bubbler)



**M-23C**  
Square Single Height

The M-23C fountain features a single square pedestal with octagonal base and square fountain bowl.

**-FRU1**  
Year-Round Freeze-Resistant

**-PFS**  
Spigot Pet Fountain

**-JF1**  
Spigot Jug Filler

**-JF2**  
Pushbutton Jug Filler

**-CH30**  
Child Height (30" from  
grade to bubbler)

**M-23B**  
Square Single Arm  
Barrier-Free, Dual Height



This ADA compliant unit has one fountain bowl at standard height and a single arm with a fountain bowl. The fountains are operated by pushbutton controls.

**-JF2**  
Pushbutton Jug Filler

**-FRU2**  
Year-Round Freeze-Resistant

**-CH30**  
Child Height (30" from grade  
to bubbler)



Shown with optional chrome bowls

**M-33W**  
Square Barrier-Free,  
Wall Mount

**-FRA1**  
Year-Round  
Freeze Resistance





# Retro SERIES

Year-Round Freeze Resistance

Murdock's Retro Series models are the most durable line of fountains in the industry. Constructed of all brass parts and a stainless steel mainspring, their classic design and pedal operation complements any location in all four seasons. The control valve on Retro Series models is located below the frost line to provide anti-freezing functionality. All inner parts are removable for convenient, above-grade maintenance.



# Unique SERIES

Designs by Murdock®



**M-30**  
Octagonal Single Height  
with Foot Pedal

- Pedal operated
- Classic octagonal design
- Still in service after 100 years

**-BFH**  
Double Ball Check  
Valve on Drain



**M-34**  
Square Single Height  
with Foot Pedal

- Octagonal base
- Square pedestal and rectangular chrome-plated brass bowl
- Mouthguard and bubbler

**-BFH**  
Double Ball Check  
Valve on Drain



**M-40**  
Round Single Height  
with Foot Pedal

- Ruggedly simple
- Round bowl and slim pedestal
- Pedal operated
- Eco-friendly slim pedestal
- Pedal operated

**-BFH**  
Double Ball Check  
Valve on Drain

The Oakwood, constructed of molded poly, has a scratch-resistant, powder coated brass bowl and mouthguard. All parts are color coordinated in a rich brown finish. Lightweight and easy to install.

For a distinctive fountain that stands out from the rest, look no further than Murdock's Unique Series. The M-OW, our Oakwood model, is specially designed to blend with natural landscapes.

**M-OW1**  
Oakwood,  
Molded Poly

**-FRU1**  
Year-Round  
Freeze-Resistant



# Outdoor

## BOTTLE FILLER SERIES

Murdock Manufacturing's Outdoor Bottle Fillers offer a fast and convenient method of obtaining drinking water, encouraging the use of refillable water bottles and reducing the waste associated with disposable water bottles. Models include standalone bottle fillers and units with built-in drinking fountains and pet fountains. A variety of standard colors and finishes are available. All GY Series bottle fillers have hidden mounting points for a clean look when installed. Custom graphics can be added to personalize any bottle filler.



**GYQ84**  
Pedestal Mounted  
Bottle Filler and Bi-Level  
Drinking Fountain



- Pedestal-mounted, stainless steel construction
- Touch-free sensor operation
- Laminar flow water supply eliminates splash
- Eco-friendly



**M-OBF4-PF**  
Pedestal Bottle Filler  
with Sensor/Pushbutton  
Shown with -PF Pet  
Fountain Receptor

- Constructed of durable stainless steel
- Touch-free sensor operation
- Laminar flow water supply eliminates splash
- Eco-friendly



**M-OBFM4**  
Pedestal Bottle Filler  
Pushbutton Only

**GYM74**  
Pedestal Mounted Bottle Filler  
and Drinking Fountain  
Shown in Textured Fairway Green



- Pedestal-mounted, stainless steel construction
- Pushbutton drinking fountain
- Pushbutton or sensor-operated bottle filler
- ADA compliant
- Various color options



**GYQ84-PF**  
Pedestal Mounted Bottle Filler  
and Bi-Level Drinking Fountain  
Shown with -PF Pet Fountain  
Receptor and Custom Metallic  
Blue Finish



# Pet Fountain

**SERIES**  
Seasonal

Murdock® now gives you a better reason to bring your pet along. Offered in a variety of styles, Murdock pet water fountains are the smart choice where a thirsty pet can drink. Available in seasonal or year-round use models, they are made to withstand the test of time—even in dog years.



**M-OBFR4** shown with  
-PF Pet Fountain Receptor



**M-OBF4-PF**  
Pedestal Bottle Filler  
with Pet Fountain

- Pedestal-mounted, stainless steel construction
- Touch-free sensor operation
- Laminar flow water supply eliminates splash
- Eco-friendly



**M-HH1**  
Horse Head Hydrant

- Freeze-resistant
- Constructed of heavy duty cast iron
- Hands-free foot pedal operation



**M-C76B-PF (shown)**  
Barrier-Free, Dual Height,  
Pushbutton Pet Fountain

**M-C76A-PF**  
Barrier-Free, Single Height,  
Pushbutton Pet Fountain

**M-43A-PFS**  
Barrier-Free, Single Height,  
Pushbutton Fountain

**-PFS**  
Spigot Pet Fountain

**-PF-FRU2**  
Freeze Resistant,  
Pushbutton Pet Fountain



**M-PS**  
Rectangular, Pushbutton  
Pet Shower

- Shower your pet in style
- 11 gage stainless steel construction
- Multiple color options

Shown in Textured  
Fairway Green



**GRM45-PF**  
Barrier-Free, Pedestal-Mounted  
Bi-Level Round Drinking Fountain  
with Pet Fountain

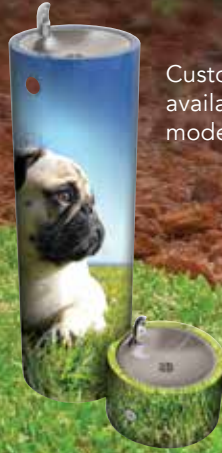
Shown with Textured  
Alpine Blue finish



# Pet Fountain

**SERIES**  
Seasonal

Customized graphics available on many models.



**GRF35-PF**  
Pedestal-Mounted Round Steel Drinking Fountain with Pet Fountain Receptor

- Round contemporary fountain
- Fountains are independently operated
- Multiple color options

Shown in Textured Alpine Blue. This round, contemporary fountain is also available in Textured Fairway Green, Textured Firehouse Red, All-Stainless Steel. Other colors are available at request. Fountains are operated with separate buttons.



**M-PFS**  
Seasonal, Spigot Pet Fountain

- Spigot operated
- Perfect for standalone application

# Contemporary

## DRINKING FOUNTAIN SERIES

### Basic

The Contemporary Drinking Fountain Series features a clean and simple design that complements most any location from the park to a downtown street.



**GWA74**  
Wall-Mounted Drinking Fountain with Lever-Operated Valve

This round, wall-mounted stainless steel drinking fountain features a simple economical design and lever activation. Shown with -PT1 P-trap



**GWB24**  
Wall-Mounted Drinking Fountain with Pushbutton Brass Bubbler

**-PT1**  
P-trap, 1-1/4" OD

**GWF55**  
Pedestal-Mounted Drinking Fountain with Lever-Operated Valve

Model GWF55 is a pedestal mounted, round drinking fountain that is economical and vandal resistant.

**GWF65**  
Pedestal-Mounted Fountain with Pushbutton Bubbler



# Contemporary

## DRINKING FOUNTAIN SERIES

### Round Steel

All of our Contemporary Drinking Fountains are designed with heavy 12 gage stainless steel. Fountains can be provided in a satin stainless steel finish or powder coated in your choice of colors—Textured Fairway Green, Textured Firehouse Red, Textured Alpine Blue or other available colors (color options available on website). Stainless steel is the ideal material for outdoor drinking fountains because of its durability and corrosion resistance. Powder coating adds color that is durable and chip-resistant for a long-lasting finish.

The contoured stainless steel basins with rounded corners and edges reduce splash, ensure proper drainage and reduce standing wastewater. Vandal-resistant bubblers are one-piece stainless steel. All GR series fountains are pushbutton activated with adjustable flow control. In addition, logically placed matching access panels allow for an easy hook-up of all the plumbing connections.



**GRF35**  
Pedestal-Mounted Round Drinking Fountain Shown in Textured Fairway Green



**M-OBR4-GRD**  
Barrier-Free Bi-Level Wall Mounted Round Drinking Fountain with Sensor/ Pushbutton Recessed Bottle Filler Shown in Textured Firehouse Red



**GRC75**  
Wall-Mounted, Round Drinking Fountain Shown in Textured Alpine Blue



**GRQ45**  
Barrier-Free, Tri-Level, Pedestal-Mounted Round Drinking Fountain Shown in Textured Fairway Green

**-PF**  
Pet Fountain Receptor



**GRT75-PF-RFS**  
Free-standing Pet Fountain

On-Ground, Wall-Mounted Pet Fountain Shown in Textured Fairway Green

**Stainless steel is the standard material for all Contemporary Series Fountains.**

**NOTE:** All of our Contemporary Series Fountains can be ordered with Safewater™ (NP) or Freeze-Resistant options.



**GRM45**  
Barrier-Free, Pedestal-Mounted Bi-Level Round Drinking Fountain

**-PF**  
Pet Fountain Receptor



# Contemporary

## DRINKING FOUNTAIN SERIES

### Square Steel

The GS Series features vandal-resistant fountains that offer a refreshing, attractive look for any location. All units feature 18 gage, 304 stainless steel bowls mounted in heavy duty stainless steel receptors, arms, or pedestals. In addition to the stainless steel finish, units can also be powder coated in: Textured Fairway Green, Textured Firehouse Red, Textured Alpine Blue or other available colors (color options available on website). Units are pushbutton activated with a lead-free stainless steel bubbler.



**M-OBR4-GSD**  
Barrier-Free Bi-Level Wall Mounted Square Drinking Fountain with Sensor/Pushbutton Recessed Bottle Filler Shown in Textured Firehouse Red




**GSF55**  
Pedestal-Mounted Square Drinking Fountain Shown in Textured Fairway Green  
**-PF**  
Pet Fountain Receptor



**GSC55**  
Square, Wall-Mounted Drinking Fountain Shown in Textured Alpine Blue




**GSJ95**  
Barrier-Free, Pedestal-Mounted Square Drinking Fountain Shown in Textured Alpine Blue  
**-PF**  
Pet Fountain Receptor 



**GSE64-FG**  
Wall-mounted, vandal-resistant drinking fountain.



**GSQ45**  
Barrier-free pedestal-mounted tri-level square drinking fountain Shown in Textured Fairway Green   
**-PF**  
Pet Fountain Receptor

**NOTE:** All of our Contemporary Series Fountains can be ordered with Safewater™ (NP) or Freeze-Resistant options.

# Contemporary CONCRETE SERIES

Round Concrete

Our Concrete Series Fountains offer an attractive and natural appearance for any environment. All concrete series fountains have 18 gage, 304 stainless steel bowls built into concrete pedestals or arms. Each unit is operated by a self-closing button and features a non-squirt bubbler made from stainless steel.



**GUF99-PF**  
Pet Fountain

Pedestal-mounted, vandal-resistant found drinking fountain with Pet Fountain Receptor Shown with Tan Aggregate



**GUF99**  
Pedestal-mounted, vandal-resistant found drinking fountain, shown in Brown Aggregate

**NOTE:** All of our Contemporary Series Fountains can be ordered with Safewater™ (NP) or Freeze Resistance options.

# Contemporary CONCRETE SERIES

Square Concrete



**GVC59**  
Barrier-Free, Wall-Mounted Square Concrete Drinking Fountain Shown in Tan Aggregate



**GVF19**  
Pedestal-Mounted, Square Concrete Drinking Fountain Shown in Brown Aggregate  
**-PF**  
Pet Fountain Receptor



**GVM49**  
Barrier-Free, Bi-Level Pedestal-Mounted, Square Concrete Drinking Fountain Shown in Tan Aggregate and with Pet Fountain Receptor



**GVQ89**  
Barrier-Free, Tri-Level, Pedestal-Mounted, Square Concrete Drinking Fountain Shown in Brown Aggregate



**GVJ19**  
Barrier-free, Pedestal-Mounted, Square Concrete Drinking Fountain shown in Brown Aggregate  
**-PF**  
Pet Fountain Receptor



**NOTE:** All of our Contemporary Series Fountains can be ordered with Safewater™ (NP) or Freeze-Resistant options.

# Pool and Beach

## SHOWERS

These shower units are the perfect partners for fun in the sun! Powder coated or stainless steel shower units are available. Optional foot showers available on most models.



### M-PCS14-GB-FS

Column Shower with Dual Height Shower Heads, Dual Grab Bars and Foot Wash Shown in all-Stainless Steel

- Increased accessibility with two shower heads and one foot shower
- Grab bar accessibility
- Multiple color options



### M-PBF17

Pedestal Shower with Drinking Bubbler and Spigot Foot Wash Shown with Blue Powder Coat

- One shower head and one foot shower
- Includes simple bubbler
- Pull-chain activation
- Multiple color options



### M-PCS14-FS

Column Shower with Foot Shower Shown in all-Stainless Steel

- One shower head and one foot shower
- Pushbutton activation



### M-PCS14-FS

Column Shower with Foot Shower Shown in Red Powder Coat

- One shower head and one foot shower
- Pushbutton activation
- Multiple color options

OPTIONAL CONFIGURATIONS AVAILABLE ON SHOWER UNITS.

# Special Applications SERIES

## Year Round Freeze Resistance

Special series fountains and jug fillers feature trim line designs that save space. Perfect for roadside rest areas, parks, schools and camping and picnic areas. All inner parts are removable for convenient, above-grade maintenance.



### M-ESH175

3/4" Compression Jug Filler, Self-Closing Lever Handle, Side Inlet

- Trim line design
- Freeze-resistant
- Optional double-ball check valve

### Also Available:

#### M-ESH175VA

3/4" Compression Jug Filler, Self-Closing Lever Handle, Reduced Pressure Spring, Side Inlet

#### -BFH

Double Ball Check Valve

### M-84

Square Pushbutton Jug Filler

- Constructed of galvanized steel
- Pushbutton operation
- Multiple color options (shown in Green Powdercoat and optional hose holder)

### -FRU1

Year-Round Freeze-Resistant

# Safewater™

## All Season - All Location Sanitary Drinking Fountains and Hydrants

Pushbutton, freeze resistance design. Non-pollutable units are completely sealed against groundwater contamination. Upon use, water held in reservoir is evacuated to the drain before incoming fresh water flows to bubbler. These fountains are the answer to all code requirements. For year-round applications.

**NOTE:** All of our Contemporary Series Fountains can be ordered with Safewater™ (NP) or Freeze Resistance options.



### GRM45-NP2

Barrier-free, Pedestal-Mounted Bi-Level Round Drinking Fountain Shown in Textured Alpine Blue



### GSM55-NP2


Barrier-Free Bi-Level Pedestal-Mounted Square Stainless Steel Shown in Textured Fairway Green

Safewater™ refers to sanitary water or specific product applications addressing specific environmental issues, primarily sanitary water.



**murdock**<sup>®</sup>  
SINCE 1853

15125 Proctor Avenue • City of Industry, CA 91746 USA  
Tel 800-591-9511 • [www.murdockmfg.com](http://www.murdockmfg.com)

 **WARNING:** Cancer and Reproductive Harm - [www.P65Warnings.ca.gov](http://www.P65Warnings.ca.gov)

## INNOVATIVE SPIRIT AND ENGINEERING FOUNDATION

“What sets us apart from competitors is our engineering and spirit. We have a ‘can-do’ spirit. If you ask us to do something, we will do it or figure out how to do it. That’s the part our customers like, that’s the part we like.”

- Don Morris, President and CEO

L1001335 3/2019

  
**MORRIS GROUP**  
INTERNATIONAL<sup>®</sup>

BRANDS BUILT TO LAST!<sup>™</sup>

[morriskgroup.co](http://morriskgroup.co)