

## Pet Model Series

### MODEL M-PS4 PET SHOWER

#### STANDARD FEATURES

- Pushbuttons requiring less than 5 pounds for activation
- Adjustable timing, from 5 to 60 seconds
- Chrome plated brass shower heads with 1.6 GPM flow controls and adjustable spray pattern
- Vandal resistant fasteners
- Shut off valve for easy servicing
- Heavy duty, 14 gage, 304 stainless steel construction with corrosion and scratch resistant satin finish

#### SUGGESTED SPECIFICATIONS

Column shower shall be Murdock model M-PS4 Pet Shower. Unit is to be pre-piped and hydrostatically tested.

Valves shall have internally mounted metering valve, pushbutton operated and requiring less than 5 pounds of force to activate. Timing shall be adjusted from 5 to 60 seconds. Unit shall operate on a water pressure range of 30-100 psig.

Shower head shall be chrome plated brass with 1.6 GPM flow restrictor and include an adjustable spray pattern from a coarse stream to a fine mist.

Unit shall be constructed of heavy duty 14 gage type 304 stainless steel polished to a satin finish with vandal resistant fasteners and shall include a 1/4" thick stainless steel bottom plate, providing secure mounting for shower.



☒ **Model:** M-PS5 Shown

#### **MODEL:** (Must Specify)

- |                                |                                   |
|--------------------------------|-----------------------------------|
| <input type="checkbox"/> M-PS4 | Satin Stainless Finish (Standard) |
| <input type="checkbox"/> M-PS5 | Green Powder-Coated               |
| <input type="checkbox"/> M-PS6 | Red Powder-Coated                 |
| <input type="checkbox"/> M-PS7 | Blue Powder-Coated                |
- Custom color finishes available upon request*

#### **OPTIONS**

(additional costs may be incurred)

- |                                 |  |
|---------------------------------|--|
| <input type="checkbox"/> - FRU1 | Underground freeze-resistant valve for one pushbutton <sup>1</sup> |
| <input type="checkbox"/> - LOGO | Customer specified logo <sup>1</sup>                               |

#### *Option Notes:*

<sup>1</sup> See separate option sheet.

Complies  
with the  
following  
standards:



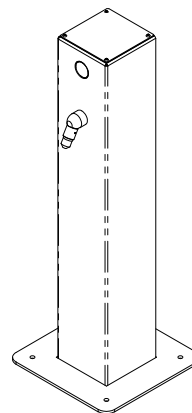
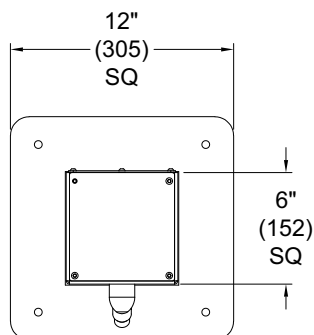
Federal  
Public Law  
111-380  
(No Lead)



**WARNING:** Cancer and Reproductive Harm - [www.P65Warnings.ca.gov](http://www.P65Warnings.ca.gov)

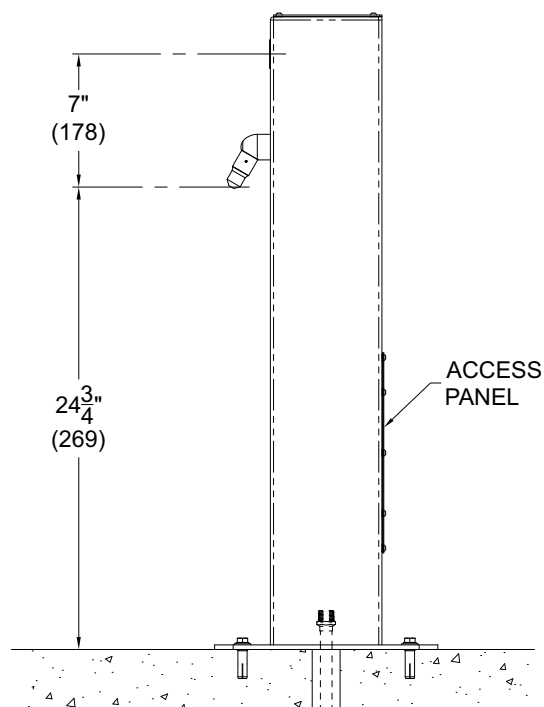
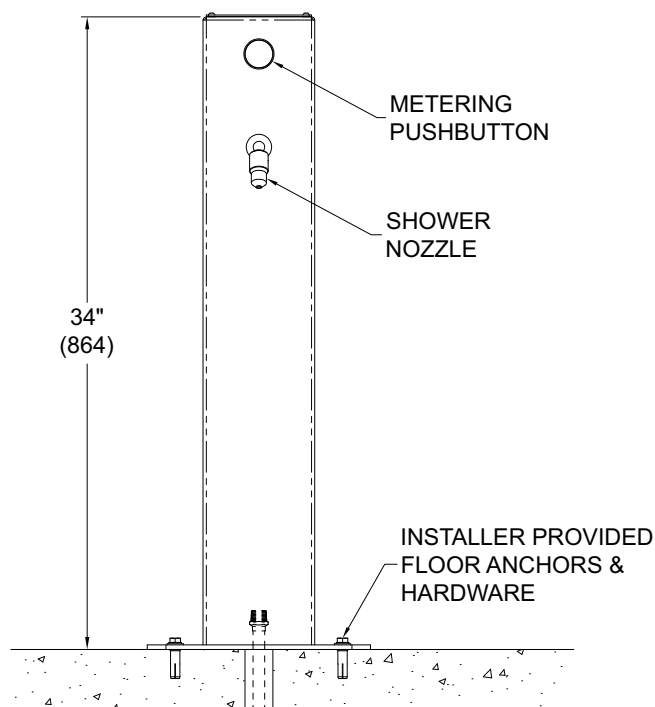
**MURDOCK MFG.** • 15125 Proctor Avenue • City of Industry, CA 91746 USA  
Phone 800-453-7465 or 626-333-2543 • [www.murdockmfg.com](http://www.murdockmfg.com)

Member of  
**MORRIS GROUP**  
INTERNATIONAL



**Pet Model**  
**MODEL M-PS4**  
**PET SHOWER**

NOT TO SCALE



**GENERAL NOTES:**

1. ALL DIMENSIONS ARE IN INCHES (MM).

<b>SELECTION SUMMARY &amp; APPROVAL FOR MANUFACTURING</b>	Model Number & Options _____	Quantity _____	<i>All dimensions are subject to manufactures tolerance of plus or minus 1/4" nominal and subject to change without notice. Murdock® assumes no responsibility for use of void or superseded data. Dimensions may change with the addition of optional accessories. Murdock® Mfg., Member of Morris Group International®, Please visit <a href="http://www.murdockmfg.com">www.murdockmfg.com</a> for most current specifications.</i>
	Company _____		
	Contact _____	Title _____	
	Signature (Approval for Manufacturing) _____		
	Date _____		