



RESTROOM ACCESSORIES

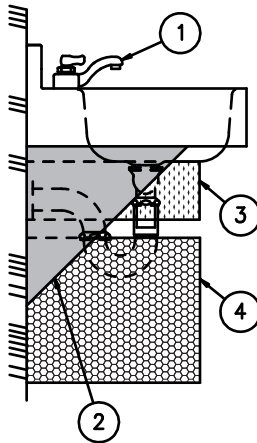
MURDOCK-SUPER SECUR RESTROOM FIXTURE OPTION

LAV-OPT

ITEM	DESCRIPTION	QTY
1	OPTIONAL LAVATORY VALVES	1
2	-AB ANGLE BRACES	2
3	-EE ELBOW ENCLOSURE	1
4	-TE TRAP ENCLOSURE	1
5	1/4" FASTENERS (BY OTHERS)	4

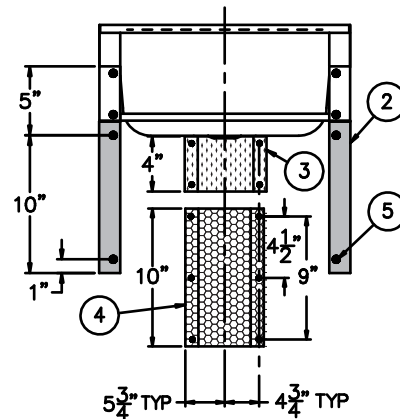
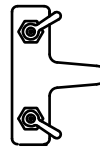
-STS

COLD OR TEMPERED WATER, DECK MOUNTED VALVE



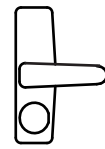
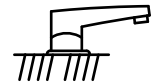
-CSSA

H & C DECK MOUNTED VALVE



-SO2

COLD OR TEMPERED WATER, SENSOR VALVE



DECK-MOUNTED VALVE OPTIONS:

- 9 lavatory is punched with 3 holes for valve on 4" centers
- H1 - 9 lavatory is punched with 1 hole for valve
- **CSSA Hot and Cold Valve** is chrome plated brass and furnished with lever handles, 0.5 GPM vandal-resistant aerator, mounting collars and nuts.
- **SO2 Sensor-Operated Valve** has spout and infra-red sensor. Sensor is powered by an optional transformer in the plumbing chase.
- **STS Cold Only Valve** is chrome plated brass and furnished with lever handle, 0.5 GPM vandal-resistant aerator, mounting collar and nut.

OPTIONAL VARIATIONS:

- **AB** stainless steel angle braces with lavatory attachment hardware (wall mounting hardware not included)
- **EE** wall-mounted stainless steel elbow enclosure (wall mounting hardware not included)
- **TE** wall-mounted stainless steel trap enclosure (wall mounting hardware not included)

DECK-MOUNTED VALVE SELECTION:

- ☐ - 9 Lavatory less Valve (3-hole)
- ☐ - CSSA Lavatory with Hot and Cold Valve
- ☐ - H1 - 9 Lavatory less Valve (1-hole)
- ☐ - SO2 Lavatory with Cold Only Sensor Valve
- ☐ - STS Lavatory with Cold Only Valve

PRODUCT OPTIONS:

- ☐ - AB Angle Braces
- ☐ - EE Elbow Enclosure
- ☐ - TE Trap Enclosure
- ☐ Transformer for Sensor Valve

SELECTION SUMMARY & APPROVAL FOR MANUFACTURING

All dimensions are nominal and subject to manufacturer's change without notice. Murdock-Super Secur assumes no responsibility for use of void or suspended data. © Copyright 2006, Murdock-Super Secur, a division of Acorn Engineering Company. Please visit www.murdock-supersecur.com for most current specifications.

Model Numbers & Options _____ Quantity _____

Company _____ Date _____

Contact _____ Title _____

Approval for Manufacturing/Signature _____

MURDOCK-SUPER SECUR A Member of Acorn Engineering's Family of Companies
15125 Proctor Avenue • City of Industry, CA 91746 USA • Phone 800-591-9880 or 626-333-2543 • Fax 626-855-4860

LAV-OPT

Rev. A 6/9/06