

## GY Series

### MODEL GYW44

BARRIER-FREE PEDESTAL MOUNTED DUAL  
LARGE CAPACITY BOTTLE FILLER DESIGN  
WITH DRINKING FOUNTAIN

#### STANDARD FEATURES

- Adult ADA Compliant
- Pushbutton and Hands Free Sensor Operated Bottle Filler
- Auto-Purge Sensor Function to Assure Fresh Water Supply
- Oversize Bottle Filler Opening with Laminar Flow Spout
- Accommodates Extra Large Bottles Up to 7" Dia x 13" Tall
- Resistant to Sunlight, Heat, Moisture and Wear
- 18 Gage, 304 Stainless Steel Drinking Fountain Bowl
- 12 Gauge, Heavy Duty Stainless Steel Construction with Corrosion and Scratch Resistant Finish
- Stainless Steel, Anti-Rotation Non-Squirt Bubbler
- 100-Mesh Inlet Strainer
- Heavy Duty Stainless Steel, Vandal Resistant

#### SUGGESTED SPECIFICATIONS

Barrier-free dual bottle filler with drinking fountain shall be Murdock model GYW44. Construction shall be 12 gauge, all stainless steel with 18 gauge stainless steel fountain bowl. Pedestal base shall have four mounting holes. Access covers shall be secured with vandal-resistant stainless steel screws. Bottle filler shall be activated by a 9 volt sensor or a pushbutton as standard and provide 1.5 GPM (5.7 LPM) flow. Auto-Purge Sensor function shall activate Bottle Filler for 10 second duration 24 hours after last activation as standard and allow for purge cycle adjustment. Unit shall contain a 100-mesh inlet strainer, 6-AA battery pack and laminar flow spout. Self-closing pushbutton, needing less than 5 pounds force, shall activate internally mounted valve with adjustable stream regulator. Bubbler shall be stainless steel with non-squirt feature and operate on water pressure range of 20-105 psig. Fountain is certified to ANSI A117.1. Unit shall be certified to Public Law 111-380 (NO-LEAD) and NSF/ANSI/CAN 61. Fixture meets ADA requirements when mounted appropriately.

#### Product Warranty

#### 3000 Gallon PFAS Filter Certifications

Option Notes:

<sup>1</sup> See separate option sheet

<sup>2</sup> This option is not available freeze-resistant.

Complies  
with the  
following  
standards:



Federal  
Public Law  
111-380  
(No Lead)



Recyclable  
Product



Water  
Conserving  
Product

**WARNING:** Cancer and Reproductive Harm - [www.P65Warnings.ca.gov](http://www.P65Warnings.ca.gov)

**MURDOCK MFG.** • 15125 Proctor Avenue • City of Industry, CA 91746 USA  
Phone 800-453-7465 or 626-333-2543 • [www.murdockmfg.com](http://www.murdockmfg.com)

Member of  
**MORRIS GROUP**  
INTERNATIONAL



Model GYW45 Shown

#### MODEL:

(Must Specify)

- ☐ GYW44 Satin Stainless Finish (Shown)
- ☐ GYW45 Green Powder-Coated
- ☐ GYW46 Red Powder-Coated
- ☐ GYW47 Blue Powder-Coated

Custom color finishes available upon request

#### OPTIONS

(additional costs may be incurred)

- ☐ -CH30 Child Height, 30" Bubbler Height
- ☐ -CV Cartridge Valve On Fountain<sup>1 2</sup>
- ☐ -FRU3 Freeze Resistant, 3 Valves<sup>1</sup> (Less Sensor & Filter<sup>1</sup> N/A)
- ☐ -FRU4 Freeze Resistant, 4 Valves<sup>1</sup> (Less Sensor & Filter<sup>1</sup> N/A)
- ☐ -HB1 Hose Bibb, Compression, w/ Hose Threaded Outlet/VB<sup>1 2</sup>
- ☐ -HB3 Hose Bibb, Loose Key, Vandal Resistant, Locked Door w/ Hose Threaded Outlet/VB<sup>1 2</sup>
- ☐ -IGM In-Ground 14" Mounting Adapter
- ☐ -MO Bottle Filler Operated By Pushbutton Only (Standard w/ Freeze-Resistant Valves)
- ☐ -NP3 Non-Pollutable, Freeze Resistant, 3 Valves (Less Sensor & Filter<sup>1</sup> N/A)
- ☐ -NP4 Non-Pollutable, Freeze Resistant, 4 Valves (Less Sensor & Filter<sup>1</sup> N/A)
- ☐ -PF Pet Fountain Receptor<sup>1</sup>
- ☐ -SLPT 10° Bottle Filler Sloped Top

#### ACCESSORIES

(additional costs may be incurred)

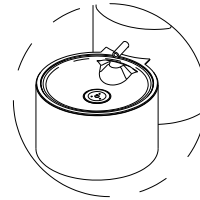
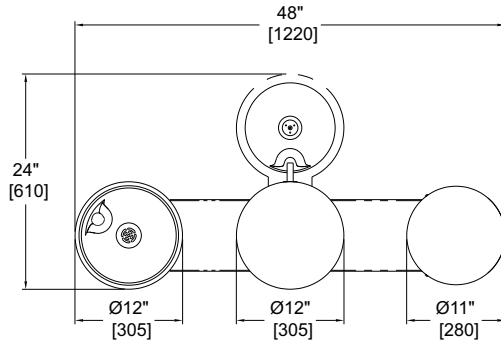
- ☐ -AP Auto-Purge Sensor Function Controller
- ☐ -IAP In-Ground Anchor Plate
- ☐ -WF3000 3000-Gallon PFAS Water Filter<sup>1</sup> NSF/ANSI, PFAS, Lead, Bacteria, Chlorine, Microplastics (N/A with -FRU<sup>1</sup> and NP<sup>1</sup> Freeze Resistant Valve)

IMPORTANT: INSTALLATION AND SITE PREP FOR FREEZE RESISTANT OPTIONS "-FRU" WILL DIFFER FROM STANDARD. REFER TO DESIGNATED FREEZE RESISTANT INSTALLATION DETAILS.

## GY Series

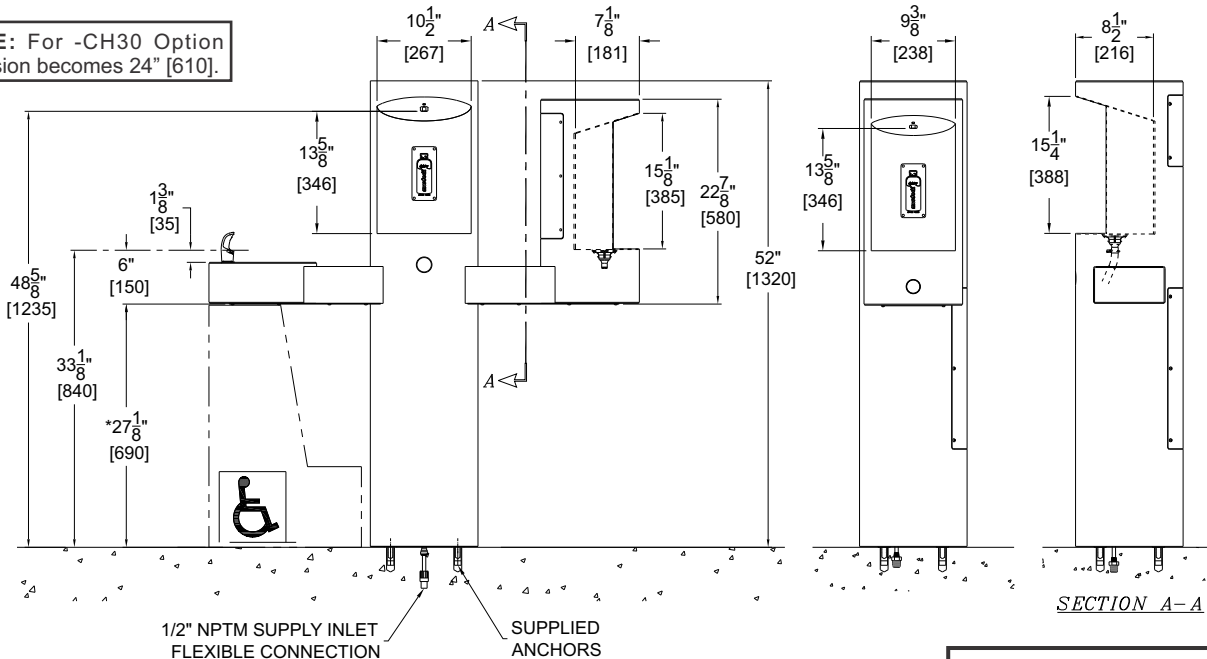
### MODEL GYW44

BARRIER-FREE PEDESTAL MOUNTED DUAL LARGE CAPACITY  
BOTTLE FILLER DESIGN WITH DRINKING FOUNTAIN



OPTIONAL -PF PET  
FOUNTAIN DETAIL

**\*NOTE:** For -CH30 Option  
dimension becomes 24" [610].



SECTION A-A

**GENERAL NOTES:**

1. ALL DIMENSIONS ARE IN INCHES [MM]
2. STOP VALVE NOT PROVIDED
3. MODELS MANUFACTURED FROM JANUARY 2025 TO PRESENT INCLUDE LARGER BOTTLE FILL AREA.

\* Valve specifications:  
Minimum/Maximum Pressure  
30 to 100 psi.

SELECTION SUMMARY  
& APPROVAL FOR  
MANUFACTURING

Model Number & Options _____	Quantity _____
Company _____	
Contact _____	Title _____
Signature (Approval for Manufacturing) _____	Date _____

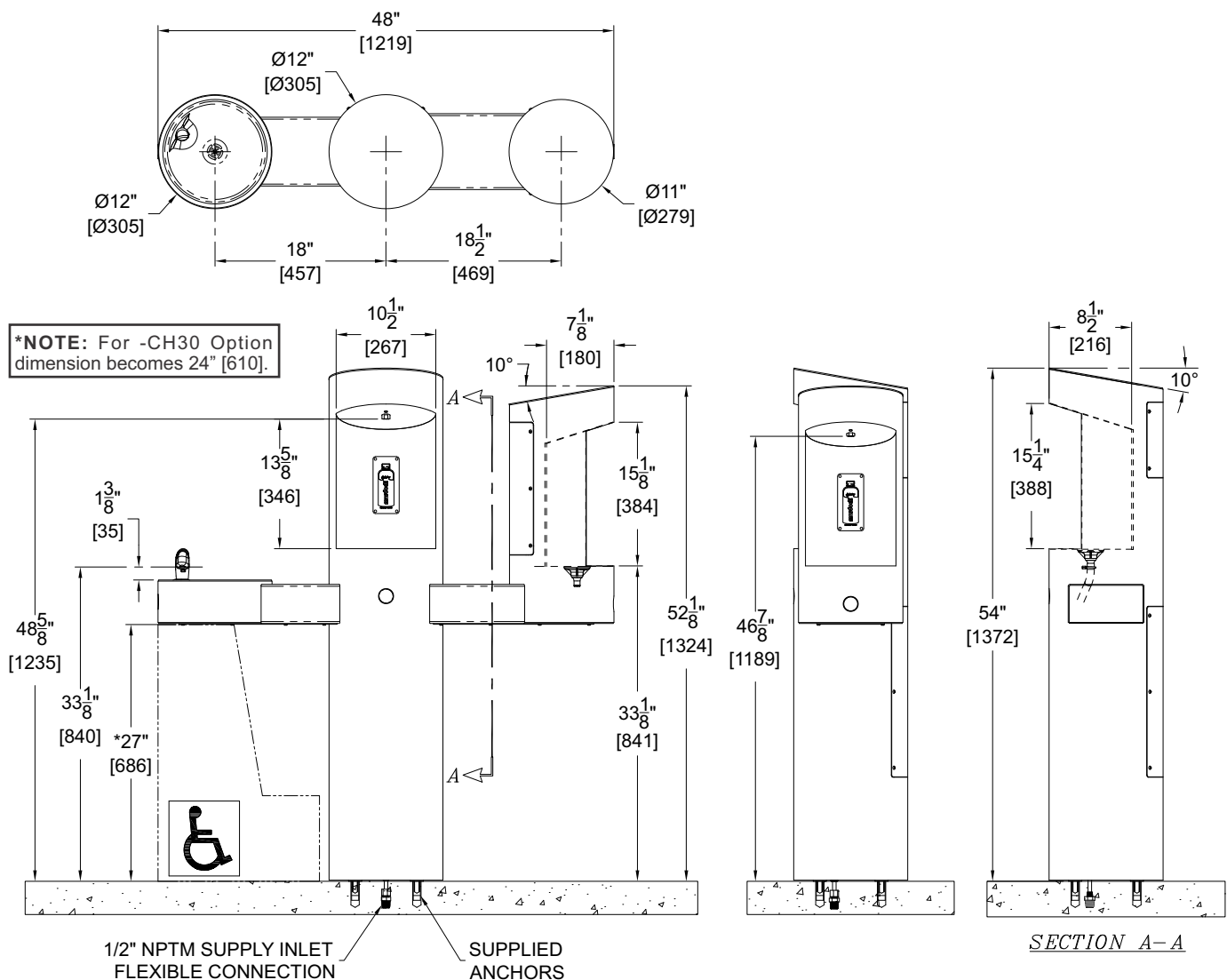
All dimensions are subject to manufactures tolerance of plus or minus 1/4" nominal and subject to change without notice. Murdock® assumes no responsibility for use of void or superseded data. Dimensions may change with the addition of optional accessories. Murdock® Mfg., Member of Morris Group International®. Please visit [www.murdockmfg.com](http://www.murdockmfg.com) for most current specifications.

IMPORTANT: INSTALLATION AND SITE PREP FOR FREEZE RESISTANT OPTIONS "-FRU" WILL DIFFER FROM STANDARD. REFER TO DESIGNATED FREEZE RESISTANT INSTALLATION DETAILS.

## GY Series

### MODEL GYW44-SLPT

BARRIER-FREE PEDESTAL MOUNTED DUAL LARGE CAPACITY  
BOTTLE FILLER DESIGN WITH DRINKING FOUNTAIN



### MODEL GYW44-SLPT SHOWN

\* Valve specifications:  
Minimum/Maximum Pressure  
30 to 100 PSI.

#### GENERAL NOTES:

1. ALL DIMENSIONS ARE IN INCHES [MM]
2. STOP VALVE NOT PROVIDED
3. MODELS MANUFACTURED FROM JANUARY 2025 TO PRESENT INCLUDE LARGER BOTTLE FILL AREA.