

Wash-N-Go![™] MODEL GWQ84 SERIES

PEDESTAL HAND WASHING STATION WITH
LARGE CAPACITY BOTTLE FILLER DESIGN
AND DRINKING FOUNTAIN

STANDARD FEATURES

- Adult ADA compliant
- Pushbutton and Hands Free Sensor Operated Bottle Filler
- Hands Free Sensor Faucet
- Auto-Purge Sensor Function to Assure Fresh Water Supply
- Oversize Bottle Filler Opening with Laminar Flow Spout
- Accommodates Extra Large Bottles Up to 7" Dia x 13" Tall
- Resistant To Sunlight, Heat, Moisture And Wear
- 12 Gauge, Heavy Duty Stainless Steel Construction with Corrosion And Scratch Resistant Finish
- 100-Mesh Inlet Strainer
- Access Cover, Heavy Duty Stainless Steel,
- Vandal Resistant
- Optional Child Height Washing Station And Fountain

SUGGESTED SPECIFICATIONS

Pedestal mounted Hand Washing Station with bottle filler and drinking fountain shall be Murdock model GWQ84 series. Construction shall be 12 gauge, all stainless steel with 18 gauge stainless steel fountain bowl and 16 gauge stainless hand wash basin. Hand wash shall be activated by a 9 Volt DC hands free sensor operated battery faucet with 0.5 GPM Laminar flow outlet to minimize splash. Auto-Purge Sensor function shall activate Bottle Filler and Faucet for 10 second duration 24 hour after last activation as standard and allow for purge cycle adjustment. Pedestal shall have four mounting holes. Access covers shall be secured with vandal-resistant stainless steel screws. Bottle filler shall be activated by a 9 volt sensor or a pushbutton as standard. Unit shall contain a 100-Mesh Inlet Strainer. Bottle filler to include 6-AA battery pack and laminar flow spout. Self-closing pushbuttons, needing less than 5 pounds force, shall activate internally mounted valves with adjustable stream regulators. Bubblers shall be stainless steel with non-squirt feature and operate on water pressure range of 20-105 psig. Unit to comply with ANSI A117.1. Unit shall be certified to Public Law 111-380 (NO-LEAD) and NSF/ANSI/CAN 61. Fixture meets ADA and ADA Standing Person, requirements when mounted appropriately.

Product Warranty

3000 Gallon PFAS Filter Certifications

Options Notes:

¹ See separate option sheet.

² Contact factory for information on freeze resistant models

³ Side Mounted "Urn Style" with Mounting Bracket and Hardware. Non-ADA Compliant

Complies with the following standards:



Federal Public Law 111-380 (No Lead)



WARNING: Cancer and Reproductive Harm - www.P65Warnings.ca.gov



Model GWQ85-SO-BAT-PF Shown

MODEL:

- ☐ GWQ84 Satin Stainless Finish
- ☐ GWQ85 Green Powder-Coated (Shown)
- ☐ GWQ86 Red Powder-Coated
- ☐ GWQ87 Blue Powder-Coated

Custom color finishes available upon request.

WASH BASIN OPERATION

- ☒ -SO-BAT Sensor operation, Battery powered faucet

OPTIONS

(additional costs may be incurred)

- ☐ -CH31 Child Height, 31", Basin Rim / 30" Bubbler
- ☐ -HB1 Hose Bibb, Compression, w/ Hose Threaded Outlet/VB^{1,2}
- ☐ -HB2 Hose Bibb, Loose Key, Hose Threaded Outlet /VB¹
- ☐ -HB3 Hose Bibb, Loose Key, Vandal Resistant, Locked Door w/ Hose Threaded Outlet/VB^{1,2}
- ☐ -IGM In-Ground 14" Mounting
- ☐ -JF1 Jug Filler, Spigot, Self-Closing Valve w/ Plain End^{1,2}
- ☐ -JF2 Jug Filler, Pushbutton, Self-Closing Valve w/ Plain End¹
- ☐ -LOGO Customer Specified Logo
- ☐ -MO Bottle Filler Operated By Pushbutton Only
- ☐ -PF Pet Fountain¹
- ☐ -SLPT 10° Bottle Filler Sloped Top

ACCESSORIES

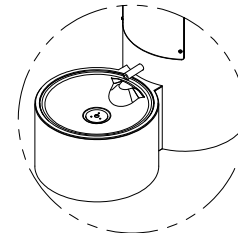
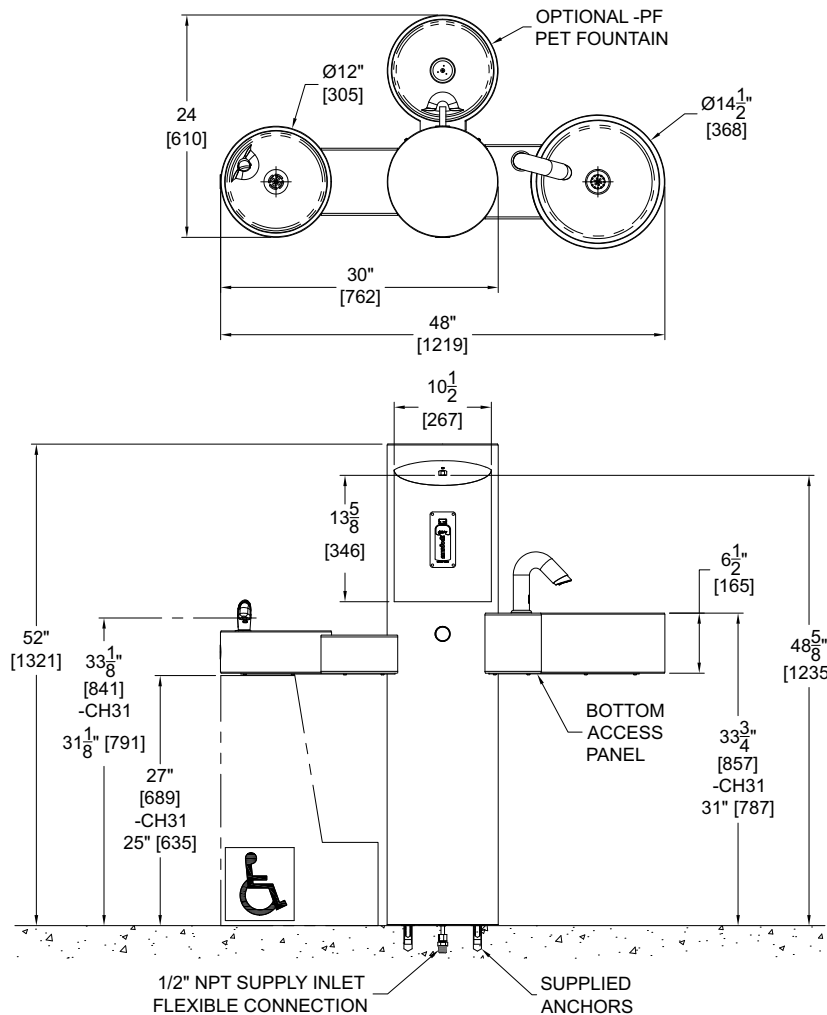
(additional costs may be incurred)

- ☐ -AP Auto-Purge Sensor Function Controller
- ☐ GW000-PS Pump Soap Dispenser³
- ☐ -IAP In-Ground Anchor Plate¹
- ☐ -LSR Bowl With Leaf And Debris Strainer¹
- ☐ -WF3000 3000-Gallon PFAS Water Filter¹ NSF/ANSI, PFAS, Lead, Bacteria, Chlorine, Microplastics

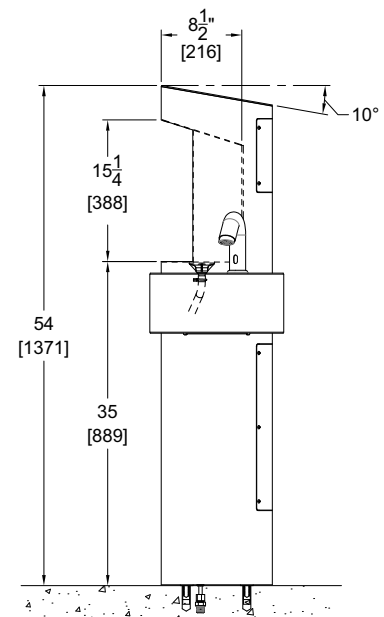
Wash-N-Go!™ MODEL GWQ84 SERIES

* Valve specifications:
Minimum/Maximum Pressure
30 to 100 psi.

PEDESTAL HAND WASHING STATION WITH LARGE CAPACITY
BOTTLE FILLER DESIGN AND DRINKING FOUNTAIN



**OPTIONAL -PF PET
FOUNTAIN DETAIL**



**OPTIONAL -SLPT
SLOPING TOP**

GENERAL NOTES:

1. ALL DIMENSIONS ARE IN INCHES [MM]
2. STOP VALVE NOT PROVIDED
3. MODELS MANUFACTURED FROM JANUARY 2025 TO PRESENT INCLUDE LARGER BOTTLE FILL AREA.

SELECTION SUMMARY & APPROVAL FOR MANUFACTURING	Model Number & Options _____	Quantity _____	<p><i>All dimensions are subject to manufactures tolerance of plus or minus 1/4" nominal and subject to change without notice. Murdock® assumes no responsibility for use of void or superseded data. Dimensions may change with the addition of optional accessories. Murdock® Mfg., Member of Morris Group International®. Please visit www.murdockmfg.com for most current specifications.</i></p>
	Company _____		
	Contact _____	Title _____	
	Signature (Approval for Manufacturing) _____		
	Date _____		