

GR Series

MODEL GRD65-BP6 BARRIER FREE BI-LEVEL WALL MOUNTED DRINKING FOUNTAIN

STANDARD FEATURES

- Both Child or Adult ADA Compliant (when properly installed)
- Resistant to sunlight, heat, moisture and wear
- 18 gage, 304 stainless steel bowl
- 12 gage, heavy duty stainless steel arm, corrosion and scratch resistant finish
- Polished stainless steel, anti-rotation non-squirt bubbler
- 100 mesh inlet strainer
- P-trap, 1-1/4" O.D.
- Vandal resistant bottom stainless steel plate and screws
- 12 gage stainless steel Back panel

SUGGESTED SPECIFICATIONS

Model GRD65-BP6 is a wall mounted, vandal resistant bi-level round drinking fountain made from 18 gage, 304 stainless steel bowls mounted into green powder coated 12 gage, heavy duty stainless steel support arms with a steel powder coated back panel. Unit shall be activated by front mounted self-closing buttons, by using less than 5 pounds of force, which activates internally mounted valves with adjustable stream regulators controlling the water flow. Bubblers shall be polished stainless steel with non-squirt features and operate on water pressure range of 20-105 psig. Unit shall be certified to Public Law 111-380 (NO-LEAD) and NSF/ANSI/CAN 61. Fixture meets ADA, ADA Standing Person, and ADA Child requirements when mounted appropriately.



MODEL:

(Must Specify)

- GRD64-BP6 Satin stainless finish
 - GRD65-BP6 Green powder-coated (Shown)
 - GRD66-BP6 Red powder-coated
 - GRD67-BP6 Blue powder-coated
- Custom color finishes available upon request

OPTIONS

(additional costs may be incurred)

- FRA4 Freeze resistant valve system
- LSR Bowl with Leaf and Debris Strainer ¹
- RBL Reverse bi-level

ACCESSORIES

(additional costs may be incurred)

- A0000000-MP2 Mounting Plate

NOTES:

1- Refer to Supplemental Submittal Sheet for details

Complies with the following standards:



Federal Public Law 111-380 (No Lead)



NSF/ANSI/CAN 61



Recyclable Product

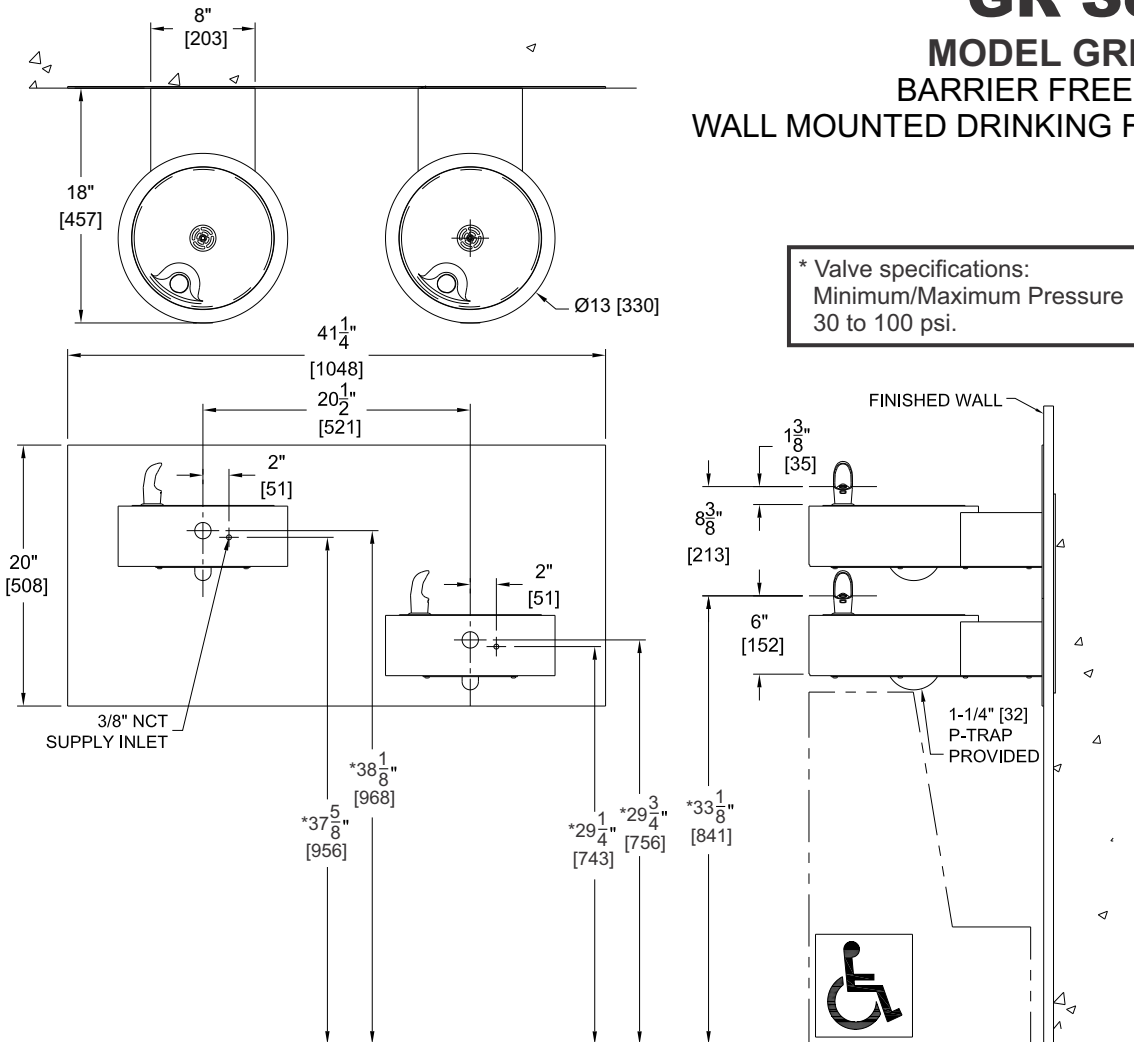


Water Conserving Product

Product Warranty

WARNING: Cancer and Reproductive Harm - www.P65Warnings.ca.gov

GR Series **MODEL GRD65-BP6** **BARRIER FREE BI-LEVEL** **WALL MOUNTED DRINKING FOUNTAIN**



GENERAL NOTES:

1. ALL DIMENSIONS ARE IN INCHES [MM].
- *2. DIMENSIONS SHOWN ARE FOR RECOMMENDED ADULT HEIGHT. ADJUST VERTICAL DIMENSIONS AS NECESSARY TO COMPLY WITH FEDERAL, STATE, & LOCAL CODES.
3. STOP VALVE NOT PROVIDED.

**SELECTION SUMMARY
& APPROVAL FOR
MANUFACTURING**

Model Number & Options _____ Quantity _____

Company _____

Contact _____ Title _____

Signature (Approval for Manufacturing) _____ Date _____

All dimensions are subject to manufacturer's tolerance of plus or minus 1/4" nominal and subject to change without notice. Murdock[®] assumes no responsibility for use of void or superseded data. Dimensions may change with the addition of optional accessories. Murdock[®] Mfg., Member of Morris Group International[®]. Please visit www.murdockmfg.com for most current specifications.