

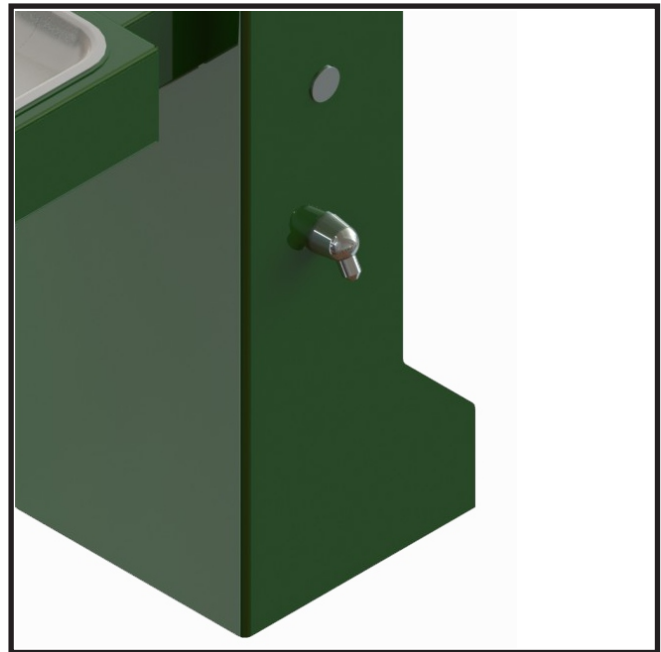


OPTIONS

OPTION -FS FOOT SPRAY

STANDARD FEATURES

- Chrome plated brass shower head
- Welded Pushbutton
- 1/4" (6 mm) NPT male connection



MODEL: *(Must Specify)*

- A0000000-FS Foot Spray

SUGGESTED SPECIFICATIONS

Model A0000000-FS is low mounted shower head with adjustable spray pattern that is designed for installation on the pedestal drinking fountains. The unit shall be polished chrome-plated brass with a welded pushbutton and have 1/4" (6 mm) NPT male connection.



Member of
U.S. Green
Building
Council



Recyclable
Product



Water
Conserving
Product

 WARNING: Cancer and Reproductive Harm - www.P65Warnings.ca.gov

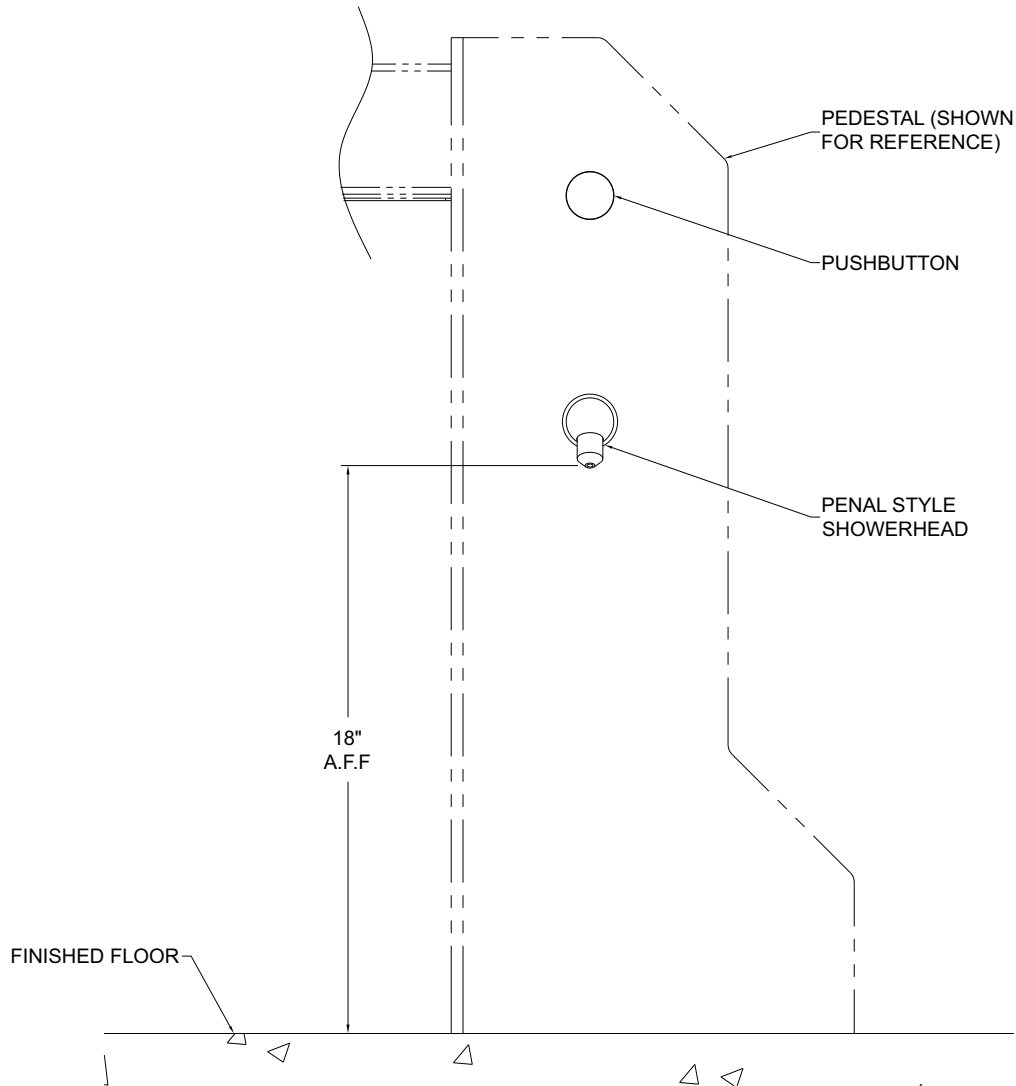
MURDOCK MFG. • 15125 Proctor Avenue • City of Industry, CA 91746 USA
Phone 800-453-7465 or 626-333-2543 • Fax 626-855-4860 • www.murdockmfg.com

Member of
MORRIS GROUP
INTERNATIONAL



OPTIONS

OPTION -FS FOOT SPRAY



Murdock Mfg.™ warrants that its products are free from defects in material or workmanship under normal use and service for a period of one year from date of shipment. Murdock's liability under this warranty shall be discharged solely by replacement or repair of defective material, provided Murdock™ is notified in writing within one year from date of shipment, F.O.B. Industry, California.

SELECTION SUMMARY & APPROVAL FOR MANUFACTURING	Model Number & Options _____	Quantity _____	<p><i>All dimensions are subject to manufactures tolerance of plus or minus 1/2" nominal and subject to change without notice. Murdock assumes no responsibility for use of void or superseded data. Dimensions may change with the addition of optional accessories. Murdock Mfg.™, Member of Morris Group International™. Please visit www.murdockmfg.com for most current specifications.</i></p>
	Company _____		
	Contact _____	Title _____	
	Signature (Approval for Manufacturing) _____	Date _____	

MURDOCK MFG. • 15125 Proctor Avenue • City of Industry, CA 91746 USA
 Phone 800-453-7465 or 626-333-2543 • Fax 626-855-4860 • www.murdockmfg.com

Member of  MORRIS GROUP INTERNATIONAL