

BF158 Series

REFRIGERATED SURFACE MOUNT
PUSHBUTTON OPERATED
BOTTLE FILLER

STANDARD FEATURES

- 100-Mesh Inlet Strainer
- 1 GPM Laminar Flow Water Spout
- Fold Down Housing for Easy Maintenance Access
- Meets ADA Forward and Side Reach Requirements
- Mounting Frame (A0000000-MF21)
- Back Panel and Louvered Grille
- Chiller Includes Water Leak Detection Auto Shut-Off Valve

SUGGESTED SPECIFICATIONS

Model BF158 is a Refrigerated Surface Mount Pushbutton operated Bottle Filler that shall deliver a minimum of 8.0 GPH (30.3 LPH) of water at 50°F (10°C) cooled from 80°F (26.7°C) inlet water and 90°F (32.2°C) ambient. Bottle Filling unit shall include Pushbutton operated activation. Cooling system shall use R-134a refrigerant and be capillary tube regulated. Chiller shall include Factory installed Water Leak Detection Auto Shut-Off Valve. Housing has a slim and trim look that blends into your environment. Designed for Maintenance Advantage installation and service. Bottle Filler is fabricated of type 304 stainless steel polished to a satin finish with antimicrobial impact resistant ABS surfaces. Bottle Filler shall provide approximately 1.0 GPM flow rate with a Laminar Flow Spout to minimize splashing. Optional WF3000 PFAS Water Filter shall have 3000 gallon capacity with 3rd Party Certification for Lead, Bacteria, Chlorine, Microplastics, and NSF/ANSI for Cyst and total PFAS reduction. When installed properly, the Bottle Filler complies with ADA forward and side reach requirements. Unit is complaint to the Air Conditioning and Refrigeration Institute Standard 1010 and shall be listed by Underwriters Laboratories for both the US and Canada and is to be compliant to ANSI/ASHRAE 18. Unit shall be certified to Public Law 111-380 (NO-LEAD) and NSF/ANSI/CAN 61.

Water Chiller Specifications:				
Model Number	GPH*	Rated Watts	Full Load Amps	Approx. Shipping Weight
A9100080	8.0	390	4.6	80 lbs.

* GPH of 50°F water at 90°F ambient room temperature and 80°F inlet water temperature
Compressor motor operates on 115 Volt / 60 Hz single phase.

Complies with the following standards:



Federal Public Law 111-380 (No Lead)



ANSI/ASHRAE 18



(220V Compressor Only)

H₂O
to go!®



Model BF158 Shown
**U.S. PATENT D876,890 S

"RATED FOR INDOOR USE ONLY"

MODEL:

(Must Specify)

- ☐ -BF158 Refrigerated Surface Mounted Pushbutton Operated Bottle Filler

OPTIONS

(additional costs may be incurred)

- ☐ -LOGO Customer Specified Logo / Graphics
- ☐ -220V 220 volt / 50 Hz or 60Hz Compressor (€€)

ACCESSORIES

(additional costs may be incurred)

- ☐ -WF3000 3000-gallon PFAS Water Filter¹
NSF/ANSI, PFAS, Lead, Bacteria, Chlorine, Microplastics

NOTES:

1- Refer to Supplemental Submittal Sheet for Complete Product details.

NSF/ANSI/CAN 61: Q ≤ 1

NSF/ANSI/CAN 61 Compliant including lower lead leaching criteria.

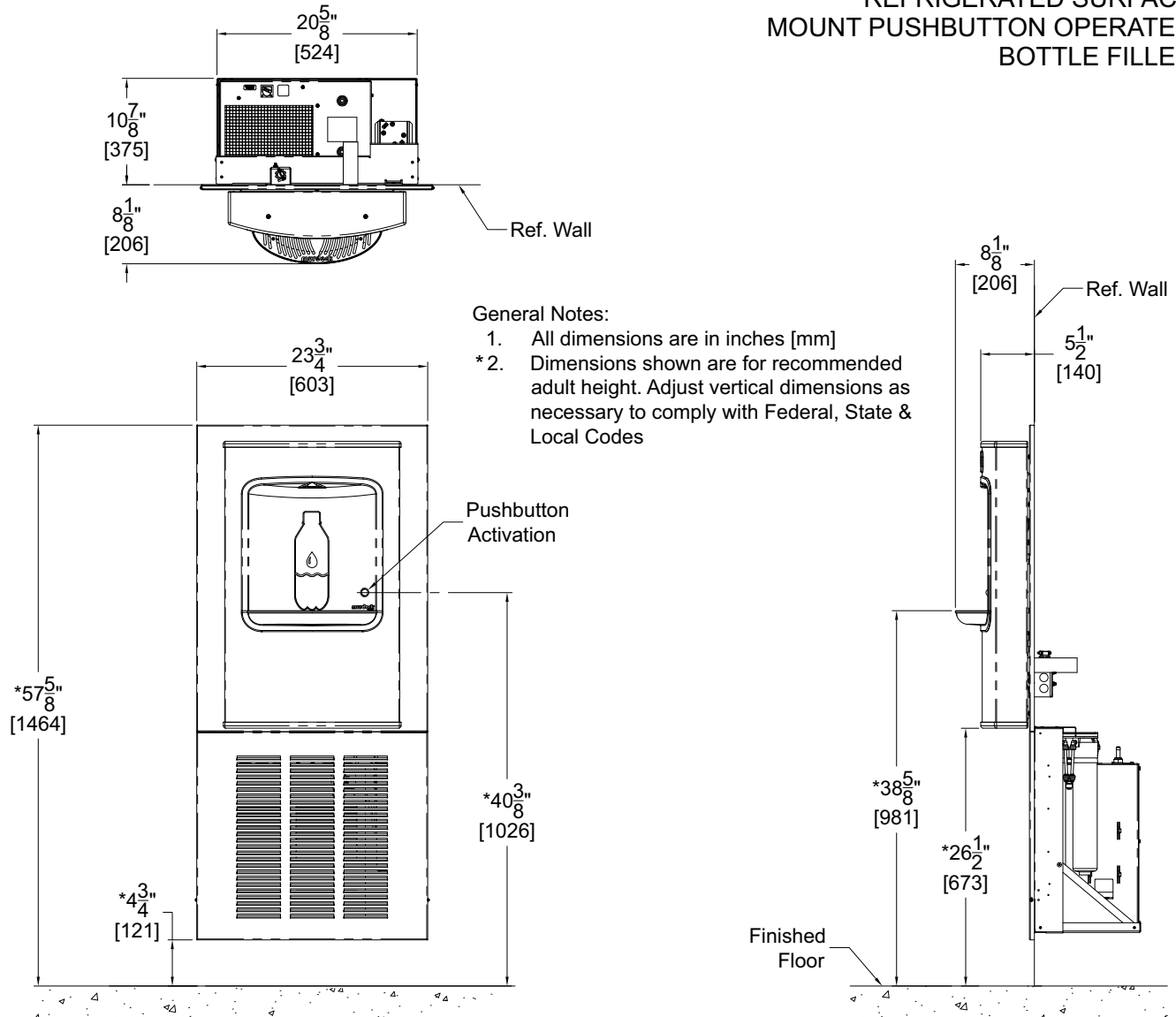
3000 Gallon PFAS Filter Certifications

Product Warranty

WARNING: Cancer and Reproductive Harm - www.P65Warnings.ca.gov

BF158 Series

REFRIGERATED SURFACE
MOUNT PUSHBUTTON OPERATED
BOTTLE FILLER



SELECTION SUMMARY
& APPROVAL FOR
MANUFACTURING

Model Number & Options _____ Quantity _____

Company _____

Contact _____ Title _____

Signature _____ Date _____
(Approval for Manufacturing)

All dimensions are subject to manufactures tolerance of plus or minus 1/4" nominal and subject to change without notice. Murdock® assumes no responsibility for use of void or superseded data. Dimensions may change with the addition of optional accessories. Murdock® Mfg., Member of Morris Group International®. Please visit www.murdockmfg.com for most current specifications.