



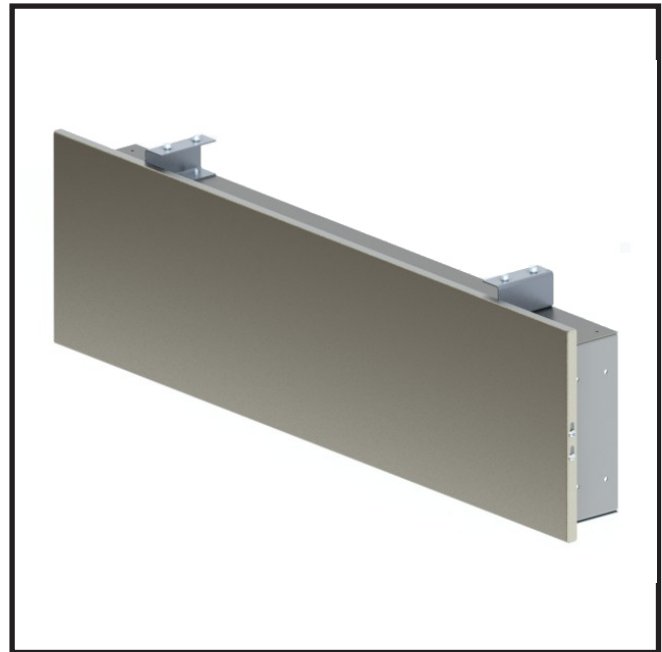
OPTIONS

OPTION -AP3

WALL MOUNTED BI-LEVEL ACCESS PANEL

STANDARD FEATURES

- 20 gage, 304 stainless steel panel
- Vandal resistant screws
- Mounting frame



MODEL:

(Must Specify)

- | | |
|---------------------------------------|--------------------------------|
| <input type="checkbox"/> A0002000-AP3 | Bronze Finish |
| <input type="checkbox"/> A0003000-AP3 | Gold Finish (High Polish) |
| <input type="checkbox"/> A0004000-AP3 | Satin Stainless Finish (Shown) |

SUGGESTED SPECIFICATIONS

Model A0004000-AP3 is a 32" (813 mm) x 9" (229 mm) vandal resistant and wall mounted access panel made from 20 gage, 304 stainless steel with a brushed finish. Unit includes mounting frame and panel screws. It is used with bi-level, wall mounted drinking fountains to provide accessibility to the plumbing behind the wall.

NOTE: A0004000-AP3 requires the MF8-W32 mounting frame.



Member of
U.S. Green
Building
Council



Recyclable
Product



Water
Conserving
Product

WARNING: Cancer and Reproductive Harm - www.P65Warnings.ca.gov

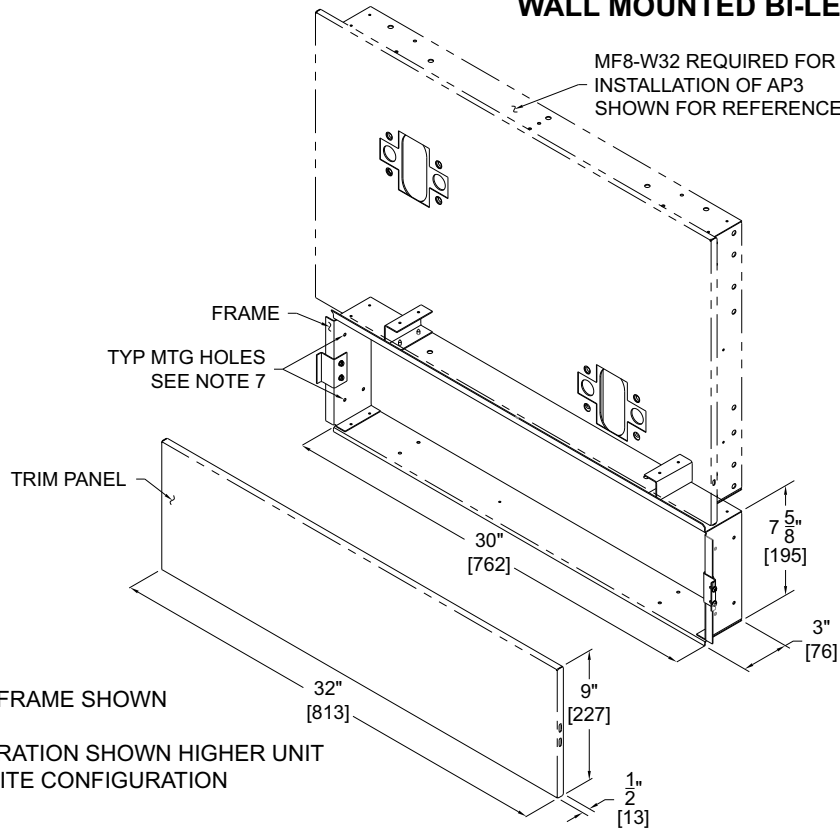
MURDOCK MFG. • 15125 Proctor Avenue • City of Industry, CA 91746 USA
Phone 800-453-7465 or 626-333-2543 • Fax 626-855-4860 • www.murdockmfg.com

Member of
MORRIS GROUP
INTERNATIONAL



OPTIONS

OPTION -AP3 WALL MOUNTED BI-LEVEL ACCESS PANEL



BI-LEVEL MOUNTING FRAME SHOWN

STANDARD CONFIGURATION SHOWN HIGHER UNIT ON THE LEFT. OPPOSITE CONFIGURATION AVAILABLE.

GENERAL NOTES:

1. ALL DIMENSIONS ARE IN INCHES [MM].
- *2. MOUNTING FRAME FOR USE WITH ACORN DRINKING FOUNTAINS BI-LEVEL FOUNTAINS.
3. VERTICAL FRAME HEIGHT IS SHOWN FOR RECOMMENDED ADULT HEIGHT, WITH 27" [686] KNEE CLEARANCE ON THE LOWER FOUNTAIN AND A 40" [1016] BASIN HEIGHT ON THE UPPER FOUNTAIN. ADJUST DIMENSIONS AS NECESSARY TO COMPLY WITH FEDERAL, STATE AND LOCAL CODES. REFER TO FOUNTAIN ROUGH-IN FOR MORE DETAILS ON FIXTURES.
4. HOLD ROUGH-IN DIMENSIONS ±1/8" [3].
5. THIS FRAME IS USED WITH SEVERAL MODELS OF ACORN DRINKING FOUNTAINS. WASTE & SUPPLY HEIGHTS ARE DETAILED IN THE FOUNTAIN ROUGH-IN DRAWING.
6. FRAME MUST BE INSTALLED SO THE SIDE LID OF FRAME OVERLAPS & BUTTS UP AGAINST FINISHED WALL.
7. SECURE FOUNTAIN FRAMES TO WALL AND SPACER USING 1/4" LAG SCREW IN Ø5/16" [8] MOUNTING HOLES, 12 PLACES.

Murdock Mfg.™ warrants that its products are free from defects in material or workmanship under normal use and service for a period of one year from date of shipment. Murdock's liability under this warranty shall be discharged solely by replacement or repair of defective material, provided Murdock™ is notified in writing within one year from date of shipment, F.O.B. Industry, California.

SELECTION SUMMARY & APPROVAL FOR MANUFACTURING	Model Number & Options _____	Quantity _____	All dimensions are subject to manufactures tolerance of plus or minus 1/2" nominal and subject to change without notice. Murdock assumes no responsibility for use of void or superseded data. Dimensions may change with the addition of optional accessories. Murdock Mfg.™, Member of Morris Group International™. Please visit www.murdockmfg.com for most current specifications.
	Company _____		
	Contact _____	Title _____	
	Signature (Approval for Manufacturing) _____	Date _____	