

## A180CUSP Series

### MODEL A1804000-CUSP

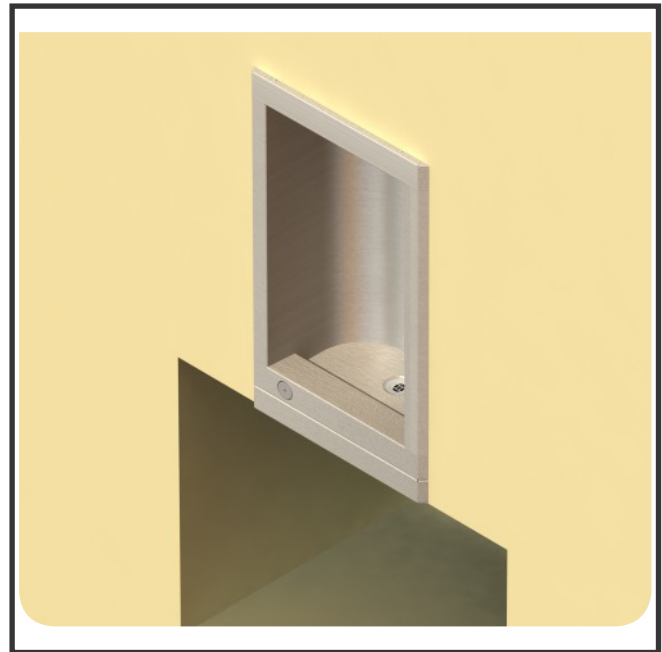
BARRIER FREE, FULLY RECESSED  
WALL MOUNTED CUSPIDOR

#### STANDARD FEATURES

- Child or Adult ADA Compliant (when properly installed)
- 18 gage, 304 stainless steel cabinet
- 16 gage, galvanized mounting frame
- Polished chrome plated brass, washdown outlet
- 100 mesh inlet strainer
- Vandal resistant screws

#### SUGGESTED SPECIFICATIONS

Model A1804000-CUSP is a fully recessed, wall mounted, cuspidor made from 18 gage, 304 stainless steel with a brushed finish. Unit shall be activated by a surface mounted, chrome plated brass front pushbutton using less than 5 pounds of force. Washdown outlet shall be chrome plated brass and operates on a water pressure range of 20-105 psig. Unit shall be certified to Public Law 111-380 (NO-LEAD) and NSF/ANSI/CAN 61. Fixture meets ADA, ADA Standing Person, and ADA Child requirements when mounted appropriately.



“INDOOR USE ONLY”

#### MODEL:

(Must Specify)

- A1804000-CUSP Cuspidor

#### OPTIONS

(additional costs may be incurred)

- HP High Polish

Complies with the following standards:



Federal Public Law 111-380 (No Lead)

NSF/ANSI/CAN 61-2020

[Product Warranty](#)

WARNING: Cancer and Reproductive Harm - [www.P65Warnings.ca.gov](http://www.P65Warnings.ca.gov)

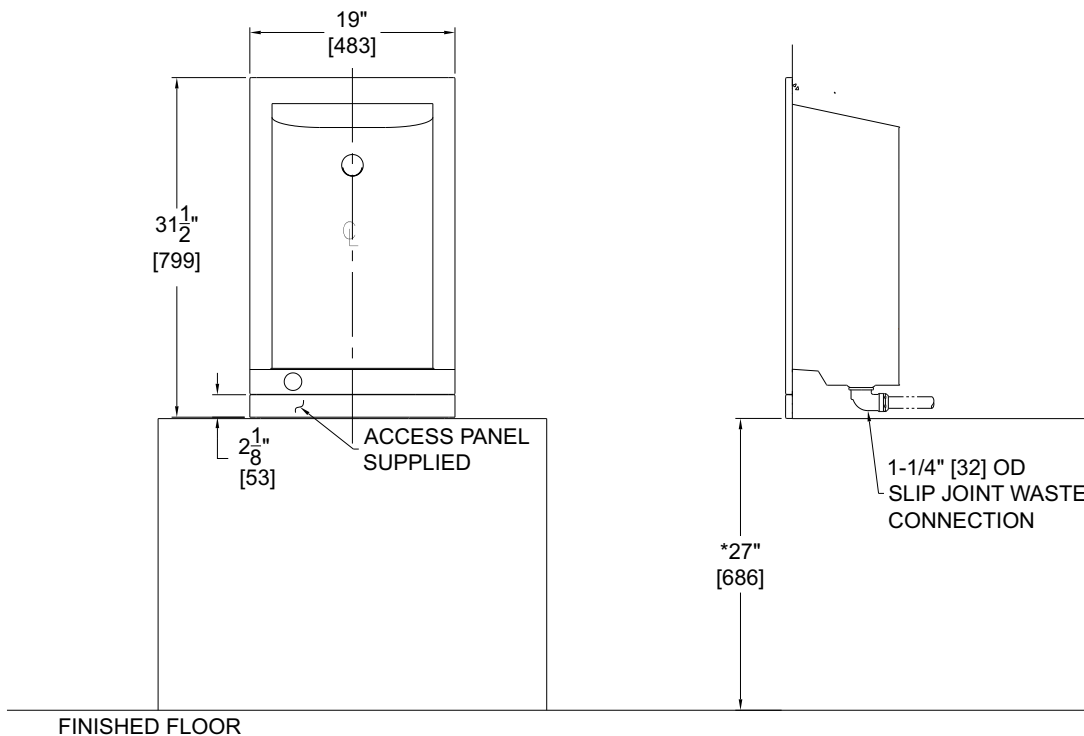
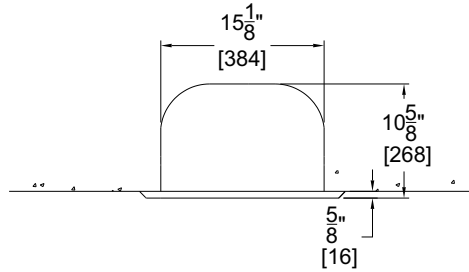
MURDOCK<sup>®</sup> MFG. • 15125 Proctor Avenue • City of Industry, CA 91746 USA  
Phone 800-453-7465 • [www.murdockmfg.com](http://www.murdockmfg.com)

Member of  
MORRIS GROUP  
INTERNATIONAL

**A180CUSP Series**

**MODEL A1804000-CUSP**

**BARRIER FREE, FULLY RECESSED  
WALL MOUNTED CUSPIDOR**



- FINISHED FLOOR
- GENERAL NOTES:  
 1. ALL DIMENSIONS ARE IN INCHES [MM].  
 \*2. DIMENSIONS SHOWN ARE FOR RECOMMENDED ADULT HEIGHT. ADJUST VERTICAL DIMENSIONS AS NECESSARY TO COMPLY WITH FEDERAL, STATE, & LOCAL CODES.  
 3. STOP VALVE NOT PROVIDED.

SELECTION SUMMARY  
& APPROVAL FOR  
MANUFACTURING

Model Number & Options \_\_\_\_\_ Quantity \_\_\_\_\_

Company \_\_\_\_\_

Contact \_\_\_\_\_ Title \_\_\_\_\_

Signature \_\_\_\_\_ Date \_\_\_\_\_  
(Approval for Manufacturing)

*All dimensions are subject to manufactures tolerance of plus or minus 1/4" nominal and subject to change without notice. Murdock<sup>®</sup> assumes no responsibility for use of void or superseded data. Dimensions may change with the addition of optional accessories. Murdock<sup>®</sup> Mfg., Member of Morris Group International<sup>®</sup>. Please visit [www.murdockmfg.com](http://www.murdockmfg.com) for most current specifications.*