



DRINKING FOUNTAIN/BOTTLE FILLER

A172VR-BF11 Series

BARRIER FREE, VANDAL RESISTANT BUTTON ONLY, UNIVERSAL BI-LEVEL, WALL MOUNTED DRINKING FOUNTAIN WITH -BF11 PUSHBUTTON OPERATED BOTTLE FILLER

STANDARD FEATURES

Drinking Fountain

- Child or Adult ADA Compliant (when properly installed)
- Aprons and One-Piece Bottom Wrapper, stainless steel or optional Powder Coat
- Universal Bi-Level -Can be installed left unit high, right unit low or opposite with no additional parts required.
- 304 Stainless Steel Basin and Flush Mounted Chrome Plated Brass Button
- Polished Stainless Steel, Anti-Rotation, Non-Squirt Bubblers or Stainless Steel Bubbler
- Auto-stop allows Cartridge and Strainer service without removing Drinking Fountain to access Water Supply Stop
- Lead free

Bottle Filler

- ADA Compliant
- 100-Mesh Inlet Strainer
- Pneumatic Pushbutton Operation
- 1 GPM Laminar Flow

SUGGESTED SPECIFICATIONS

Drinking Fountain

Model A172400F-UBL-VR-BF11 is a self-contained, Vandal Resistant Button pressure Drinking Fountain. Units shall be activated by Chrome Plated Brass Front Pushbuttons by using less than 5 pounds of force. Lead-Free Bubbler shall deliver a 0.3 GPM flow, have an integrally designed non-squirt feature and operate on a water pressure range of 20-105 PSIG. Basin shall be constructed from 304 Stainless Steel and have an Integral Drain. Cabinet shall be either Galvanized Steel with Granite Powder Coat or Stainless Steel. Unit is certified to ANSI A117.1, Public Law 111-380 (NO-LEAD), CHSC 116875 and NSF/ANSI 61, Section 9. Fixture meets ADA, ADA Standing Person, and ADA Child requirements when mounted appropriately.

Bottle Filler BF11

Bottle Filling unit shall include Pushbutton operated activation. Housing construction will be 20 gage Stainless Steel with a satin finish and will also include components manufactured with Antimicrobial, impact resistant ABS. Bottle Filler shall provide approximately 1 GPM flow rate with a Laminar Flow Spout to minimize splashing. Optional -WF1 has a 1500-gallon capacity, has NSF/ANSI 42 & 53 certification and reduces lead content in the drinking water by 99%.



Model A172400F-UBL-VR-BF11 Shown
PATENT# 10,100,933



"RATED FOR INDOOR AND OUTDOOR USE"

MODEL: (Must Specify)

FLEXIBLE BUBBLER

- A172100F-UBL-VR-BF11 Granite Finish Cooler w/ Satin Stainless Finish Bottle Filler
- A172400F-UBL-VR-BF11 Satin Stainless Finish (Shown)

LEAD-FREE STAINLESS STEEL BUBBLER

- A172100S-UBL-VR-BF11 Granite Finish Cooler w/ Satin Stainless Finish Bottle Filler
- A172400S-UBL-VR-BF11 Satin Stainless Finish

DRINKING FOUNTAIN OPTIONS

(additional costs may be incurred)

- CSC3 Concealed Support Carrier
- LOGO Customer Specified Logo / Graphics
- SK5 Skirt Kit for Upper Unit
- WF1 1500-Gallon Capacity, NSF 42+53, 1 Micron Lead Reduction Filter

Complies with the following standards:



Federal Public Law 111-380 (No Lead)

CHSC 116875



Member of U.S. Green Building Council



Recyclable Product



Water Conserving Product

WARNING: Cancer and Reproductive Harm - www.P65Warnings.ca.gov

MURDOCK MFG. • 15125 Proctor Avenue • City of Industry, CA 91746 USA
Phone 800-453-7465 or 626-333-2543 • Fax 626-855-4860 • www.murdockmfg.com

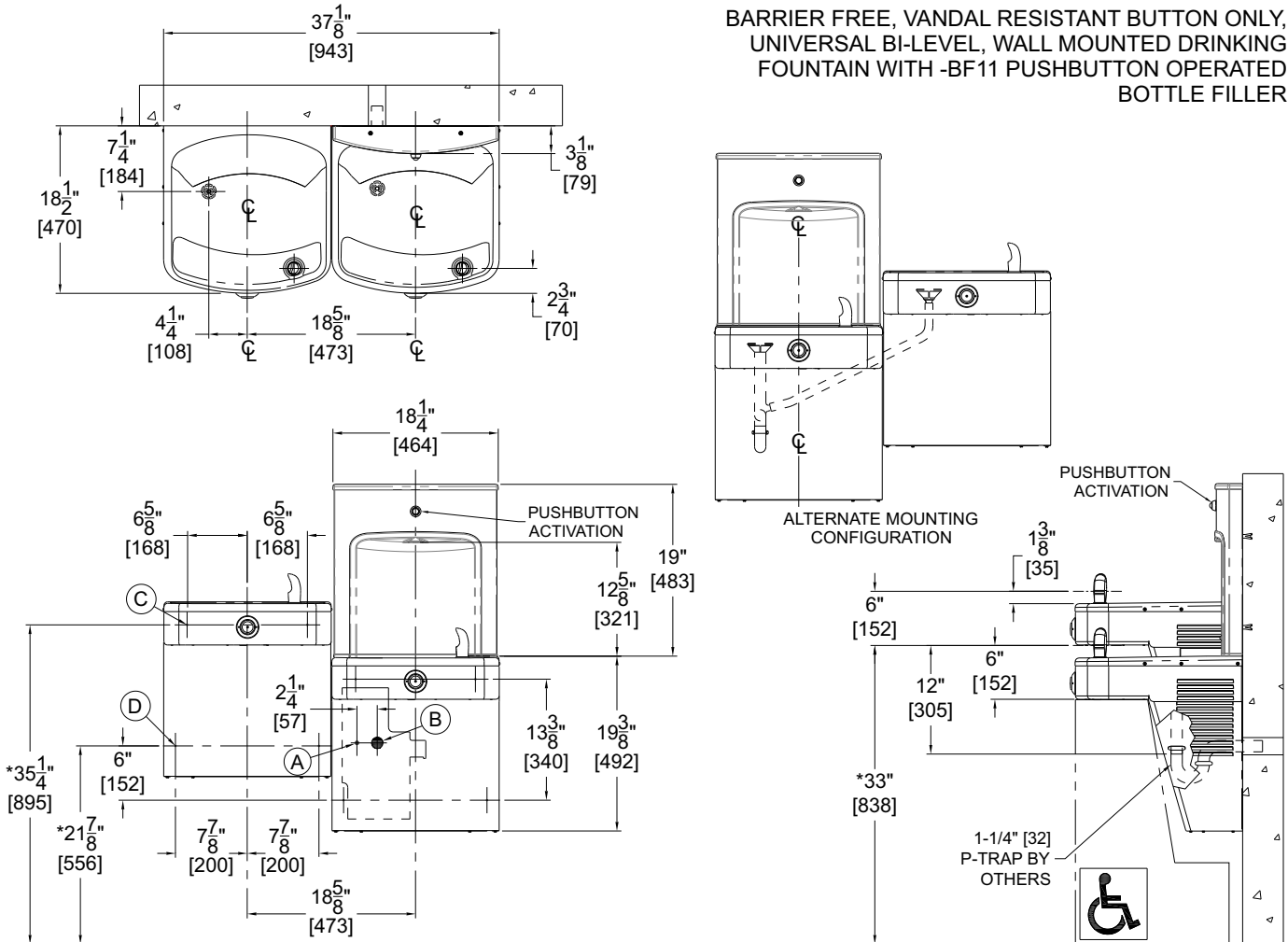
Member of MORRIS GROUP INTERNATIONAL



DRINKING FOUNTAIN/BOTTLE FILLER

A172VR-BF11 Series

BARRIER FREE, VANDAL RESISTANT BUTTON ONLY,
UNIVERSAL BI-LEVEL, WALL MOUNTED DRINKING
FOUNTAIN WITH -BF11 PUSHBUTTON OPERATED
BOTTLE FILLER



General Notes:

1. All dimensions are in inches [MM]
2. Allow 4 inches [102MM] minimum clearance per side for ventilation
- *3. Dimensions shown are for ADA adult height. Adjust vertical dimensions as necessary to comply with Federal, State & Local Codes
4. Stop Valve, P-Trap & Electrical Outlet not supplies
5. Important: Fixture must be attached to wall with appropriate Anchor Screws

- A. 3/8" O.D. Supply Inlet
- B. Waste Outlet for 1-1/4" P-Trap, by others
- C. Ø3/8" Hanger Bracket Punching, 3 places for Anchoring Hardware by others
- D. Ø1/4" Punching, 2 places for Anchoring Hardware, by others

Murdock Mfg.™ warrants that its products are free from defects in material or workmanship under normal use and service for a period of one year from date of shipment. Murdock's liability under this warranty shall be discharged solely by replacement or repair of defective material, provided Murdock™ is notified in writing within one year from date of shipment, F.O.B. Industry, California.

SELECTION SUMMARY & APPROVAL FOR MANUFACTURING	Model Number & Options _____	Quantity _____	All dimensions are subject to manufactures tolerance of plus or minus 1/2" nominal and subject to change without notice. Murdock assumes no responsibility for use of void or superseded data. Dimensions may change with the addition of optional accessories. Murdock Mfg.™, Member of Morris Group International™. Please visit www.murdockmfg.com for most current specifications.
	Company _____		
	Contact _____	Title _____	
	Signature (Approval for Manufacturing) _____	Date _____	