

A172.8-UG-SO Series

BASE MODEL A172108S-UG-SO

BARRIER FREE, SENSOR OPERATED,
BI-LEVEL WALL MOUNTED WATER COOLER

STANDARD FEATURES

- Rough-Ins Match Other Manufacturer's for Easy Replacement
- Apron and One-Piece Bottom Wrapper is Satin Finish Or Gray Powder Coat Finish
- Flexible, Low Flow, Anti-Rotation, Non-squirt Bubbler
- 100 Mesh Inlet Strainer
- Individual Hanging Brackets Provided
- 9 Volt Sensor Operation
- Lead-Free
- Child Or Adult Ada Compliant (When Properly Installed)

SUGGESTED SPECIFICATIONS

Model A172108F-UG-SO is a bi-level, self-contained, Sensor Operated pressure Water Cooler that shall deliver a minimum of **8.0 GPH** (30.3 LPH) of water at 50°F (10°C) cooled from 80°F (26.7°C) inlet water and 90°F (32.2°C) ambient. Lower unit shall be activated by a front mounted 9 Volt Infrared Sensor. Bubblers shall deliver a 0.3 GPM flow, have a flexible guard with an integrally designed Non-Squirt feature and operate on a water pressure range of 20-105 psig. Basins shall be constructed from 304 stainless steel and have an integral drain. Cabinet shall be either Galvanized or Galvannealed Steel with Gray Powder Coat Finish or Stainless Steel with Satin Finish. Cooling system shall use R-134a Refrigerant and be capillary tube regulated. Unit shall be listed by Underwriters Laboratories for both the US and Canada and is to be compliant to ANSI/ASHRAE 18. Unit shall be certified to Public Law 111-380 (NO-LEAD) and NSF/ANSI/CAN 61. Fixture meets ADA, ADA Standing Person, and ADA Child requirements when mounted appropriately. Upper shall still deliver ambient water temperature to the Bubbler in the absence of electrical power as long as there is a pressurized water supply.

Model Number	GPH*	Rated Watts	Full Load Amps	Approx. Shipping Weight
A172108S-UG-SO	8.0	335	4.1	137 lbs.

* GPH of 50°F water at 90°F ambient room temperature and 80°F inlet water temperature
Compressor motor operates on 115 Volt / 60 Hz single phase.

Complies with the following standards:



NSF/ANSI/CAN 61



Federal Public Law 111-380 (No Lead)



ANSI/ASHRAE 18



(220V Compressor Only)



Model A172108F-UG-SO Shown

PATENT# 10,100,933



Maintenance Advantage®
Water Cooler by Murdock Manufacturing

"RATED FOR INDOOR USE ONLY"

MODEL:

(Must Specify)

FLEXIBLE BUBBLER

- ☐ A172108F-UG-SO Gray Finish (Standard - Shown)
- ☐ A172408F-UG-SO Satin Stainless Finish

STAINLESS STEEL BUBBLER

- ☐ A172108S-UG-SO Gray Finish
- ☐ A172408S-UG-SO Satin Stainless Finish

OPTIONS:

(Additional costs may apply.)

- ☐ -LOGO Customer Specified Logo / Graphics
- ☐ -220V 220 Volt / 50 Hz or 60Hz Compressor

ACCESSORIES:

(Additional costs may apply. Accessory items are packaged separately.)

- ☐ -WF3 3000-Gallon PFAS Water Filter ¹
NSF/ANSI, PFAS, Lead, Bacteria, Chlorine, Microplastics
- ☐ -SK5 Cane Detection Skirt for Upper Unit ¹
(Skirt finish provided to match model selected)

NOTES:

1 - Refer to Supplemental Submittal Sheet for Details.

Compatible Mounting Support Carrier

Jay R. Smith Mfg. Co. Figure # 0834-4P <https://www.JRSmith.com>

NSF/ANSI/CAN 61: Q ≤ 1

NSF/ANSI/CAN 61 Compliant including lower lead leaching criteria.

3000 Gallon PFAS Filter Certifications

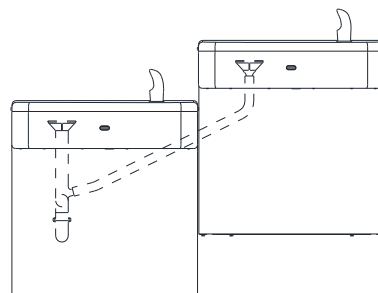
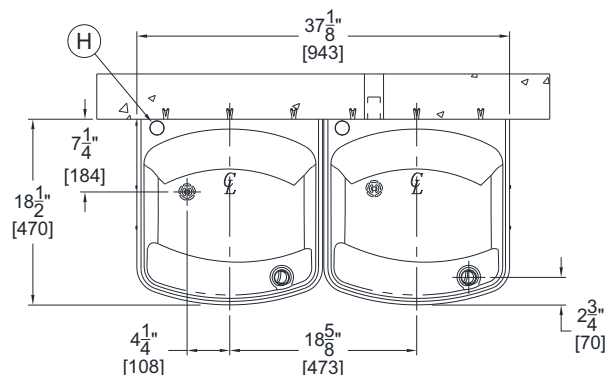
Product Warranty

WARNING: Cancer and Reproductive Harm - www.P65Warnings.ca.gov

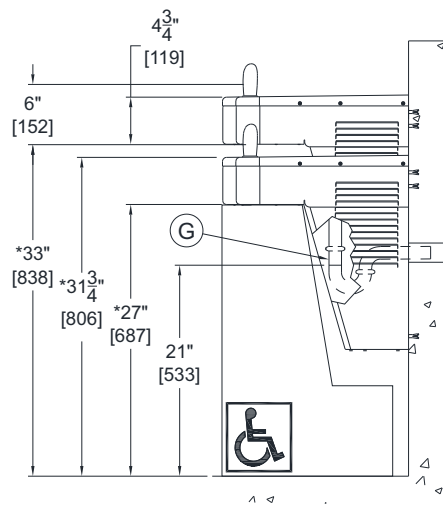
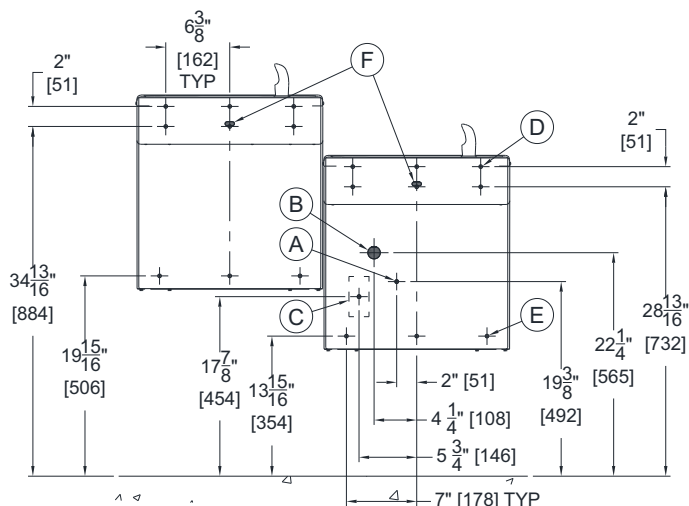
A172.8-UG-SO Series

BASE MODEL A172108S-UG-SO

BARRIER FREE, SENSOR OPERATED,
BI-LEVEL WALL MOUNTED WATER COOLER



ALTERNATE MOUNTING
CONFIGURATION



GENERAL NOTES:

1. ALL DIMENSIONS ARE IN INCHES [MM]
2. ALLOW 4 INCHES [102MM] MINIMUM CLEARANCE PER SIDE FOR VENTILATION
- *3. DIMENSIONS SHOWN ARE FOR ADA ADULT HEIGHT. ADJUST VERTICAL DIMENSIONS AS NECESSARY TO COMPLY WITH FEDERAL, STATE & LOCAL CODES
4. STOP VALVE, P-TRAP & ELECTRICAL OUTLET NOT SUPPLIED
5. IMPORTANT: COOLERS MUST BE ATTACHED TO WALL WITH APPROPRIATE ANCHOR SCREWS

- A. 3/8" O.D. SUPPLY INLET
- B. WASTE OUTLET FOR P-TRAP BY OTHERS FOR PROVIDED 1-1/4" O.D. TAILPIECE
- C. ELECTRICAL SERVICE ROUGH
- D. Ø3/8" HANGER BRACKET PUNCHING, 6 PLACES FOR ANCHORING HARDWARE BY OTHERS
- E. Ø1/4" PUNCHING, 3 PLACES FOR ANCHORING HARDWARE BY OTHERS
- F. DRINKING FOUNTAIN SENSORS
- G. 1-1/4" [32] O.D. TAILPIECE FOR P-TRAP BY OTHERS
- H. REMOVABLE PLUG FOR BOTTLE FILLER (-BF11 OR -BF12 ONLY)

IMPORTANT: Dimensions are shown for reference only. Refer to product Installation Manual for complete details prior to Rough-in.

SELECTION SUMMARY
& APPROVAL FOR
MANUFACTURING

Model Number & Options _____	Quantity _____
Company _____	
Contact _____	Title _____
Signature (Approval for Manufacturing) _____	Date _____

All dimensions are subject to manufactures tolerance of plus or minus 1/4" nominal and subject to change without notice. Murdock® assumes no responsibility for use of void or superseded data. Dimensions may change with the addition of optional accessories. Murdock® Mfg., Member of Morris Group International®. Please visit www.murdockmfg.com for most current specifications.