

## A152FG Series

### MODEL A152400S-FG

BARRIER FREE, BI-LEVEL, WALL MOUNTED  
14 GAUGE STAINLESS STEEL DRINKING  
FOUNTAIN WITH 32" TRIM PANEL

#### STANDARD FEATURES

- Child or Adult ADA Compliant (When Properly Installed)
- 14 Gauge 304 Stainless Steel
- Polished Stainless Steel, Anti-Rotation, Non-Squirt Bubbler
- 100-Mesh Inlet Strainer
- Vandal-resistant Screws
- P-Traps
- Mounting Plate With Hardware (A0000000-MP2-W32)
- 32 Inch Trim Panel

#### SUGGESTED SPECIFICATIONS

Model A152400S-FG is a wall mounted, vandal resistant bi-level drinking fountain made from **14 gauge, 304 stainless steel** with a brushed finish. Unit shall be activated by self-closing, front pushbuttons, by using less than 5 pounds of force, which activates internally mounted valves with adjustable stream regulators controlling the water flow. Bubblers shall be polished chrome plated brass with non-squirt features and operate on a water pressure range of 20-105 PSIG. Unit shall have a uniquely designed, contoured bowls with P-traps integral to the unit. Unit shall be certified to Public Law 111-380 (NO-LEAD) and NSF/ANSI/CAN 61. Fixture meets ADA, ADA Standing Person, and ADA Child requirements when mounted appropriately. Optional WF3000 PFAS Water Filter shall have 3000 gallon capacity with 3rd Party Certification for Lead, Bacteria, Chlorine, Microplastics, and NSF/ANSI for Cyst and total PFAS reduction.

**\* NOTE: For Optional -WF1 And -WF3000:**  
Installer Responsible for Remotely Locating Water Filter.  
1 - Refer to Supplemental Submittal Sheets for Details

**Compatible Mounting Support Carrier**  
Jay R. Smith Mfg. Co. Figure # 0823 <https://www.JRSmith.com>

Complies with the following standards:



Federal Public Law 111-380 (No Lead)

NSF/ANSI/CAN 61-2020



Model A152400S-FG Shown

**"RATED FOR INDOOR AND OUTDOOR USE"**

#### MODEL:

(Must Specify)

- A152400S-FG Satin Stainless Finish

#### OPTIONS

(additional costs may be incurred)

- HP High Polished Stainless Steel  
 -RBL Reverse Bi-Level

#### ACCESSORIES

(additional costs may be incurred)

- SK2-18 Skirt Kit, Stainless Steel, for upper unit<sup>1</sup>  
 -WF3000 3000-gallon PFAS Water Filter (**See Note \***)<sup>1</sup>  
NSF/ANSI, PFAS, Lead, Bacteria, Chlorine, Microplastics  
 A9100080-A 8 GPH Remote Water Chiller  
(Recommended to be with 10 Feet of Fixture)

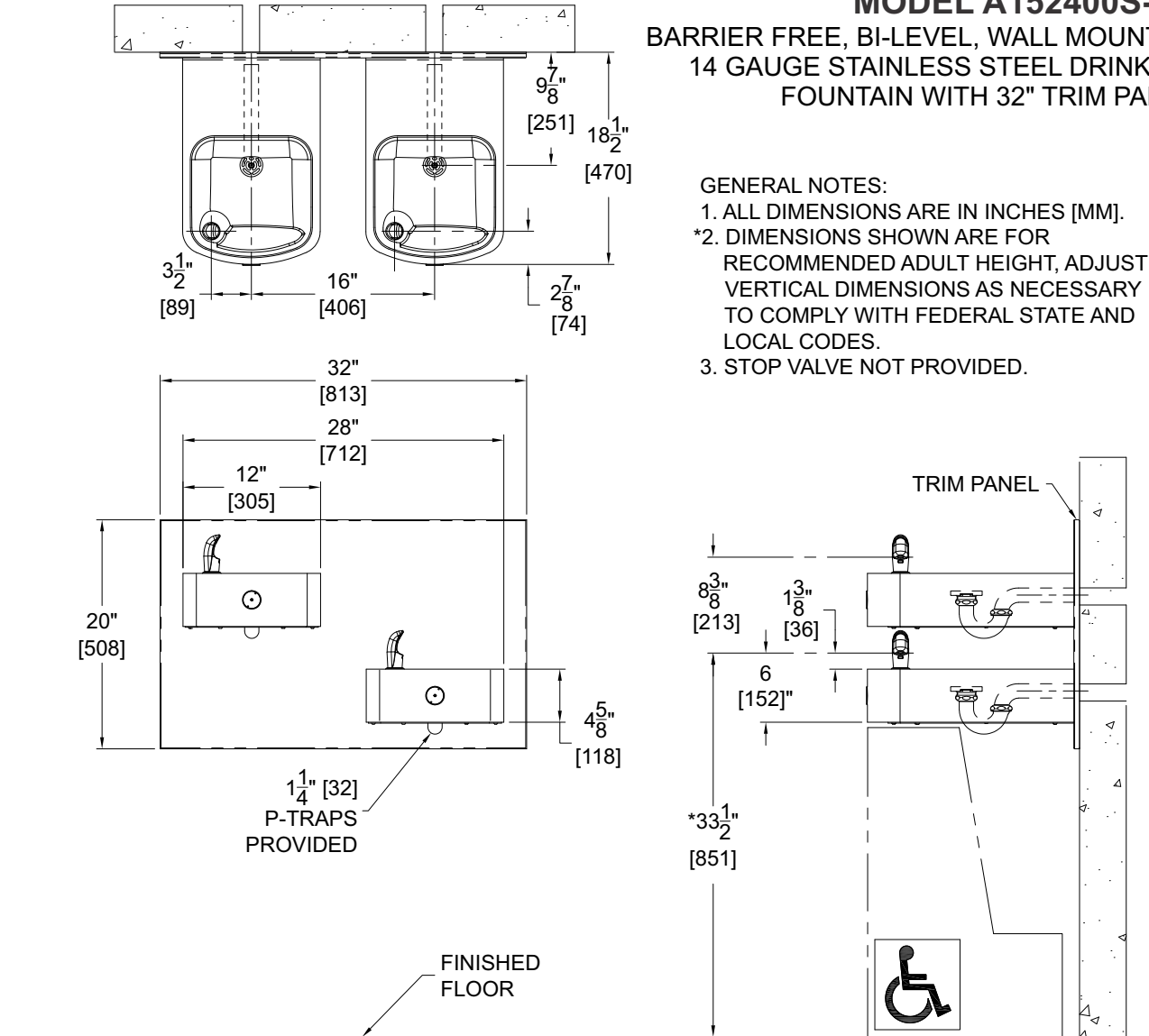
[3000 Gallon PFAS Filter Certifications](#)

[Product Warranty](#)

**⚠ WARNING: Cancer and Reproductive Harm - [www.P65Warnings.ca.gov](http://www.P65Warnings.ca.gov)**

**A152FG Series**  
**MODEL A152400S-FG**

**BARRIER FREE, BI-LEVEL, WALL MOUNTED**  
**14 GAUGE STAINLESS STEEL DRINKING**  
**FOUNTAIN WITH 32" TRIM PANEL**



**GENERAL NOTES:**

1. ALL DIMENSIONS ARE IN INCHES [MM].
- \*2. DIMENSIONS SHOWN ARE FOR RECOMMENDED ADULT HEIGHT, ADJUST VERTICAL DIMENSIONS AS NECESSARY TO COMPLY WITH FEDERAL STATE AND LOCAL CODES.
3. STOP VALVE NOT PROVIDED.

|   |   |                |   |
|---|---|----------------|---|
| <b>SELECTION SUMMARY &amp; APPROVAL FOR MANUFACTURING</b> | Model Number & Options _____                  | Quantity _____ | All dimensions are subject to manufactures tolerance of plus or minus 1/4" nominal and subject to change without notice. Murdock® assumes no responsibility for use of void or superseded data. Dimensions may change with the addition of optional accessories. Murdock® Mfg., Member of Morris Group International®. Please visit <a href="http://www.murdockmfg.com">www.murdockmfg.com</a> for most current specifications. |
|   | Company _____                                 |                |   |
|   | Contact _____                                 | Title _____    |   |
|   | Signature (Approval for Manufacturing) _____  | Date _____     |   |
|   | <b>3000 Gallon PFAS Filter Certifications</b> |                |   |