

GYM74 & GYQ84 Series
Barrier-Free Round Pedestal Stainless Steel Drinking Fountain
with Bottle Filler



GYM75



GYQ85

IMPORTANT: INSTALLATION AND SITE PREP FOR FREEZE RESISTANT OPTIONS “-FRU, -NP” WILL DIFFER FROM STANDARD! REFER TO DESIGNATED FREEZE RESISTANT INSTALLATION DETAILS PRIOR TO ROUGH-IN AND FIXTURE INSTALL FOR -FRU AND -NP SERIES OPTIONS. FOR ADDITIONAL INFORMATION VISIT: www.MurdockMfg.com/Resources OR CONTACT YOUR LOCAL SALES REPRESENTATIVE.

NOTES TO INSTALLER:

1. Please leave this documentation with the owner of the fixture when finished.
2. Please read this entire booklet before beginning the installation.
3. Check your installation for compliance with plumbing, electrical and other applicable codes.

TECHNICAL ASSISTANCE TOLL FREE TELEPHONE NUMBER:
1.800.591.9360

Technical Assistance Fax: 1.626.855.4894

For current Warranty click hyperlink [Product Warranty](http://www.murdockmfg.com/terms-and-warranty) or visit: www.murdockmfg.com/terms-and-warranty

Murdock® assumes no responsibility for use of void or superseded data. © Copyright Murdock Mfg., City of Industry, CA Member of Morris Group International. Please visit www.murdockmfg.com for most current specifications.

**COMPLIES WITH
STANDARDS**



Federal
Public Law
111-380
(No Lead)

Test rating conditions are
compliant with ARI 1010.

Member of
 MORRIS GROUP
INTERNATIONAL

murdock®
SINCE 1853

15125 Proctor Ave, City of Industry,
CA, 91746 U.S.A.
Phone 800-453-7465

www.murdockmfg.com

PRIOR TO INSTALLATION:

1. Read all installation instructions carefully, before proceeding.
2. Carefully remove fixture from packaging, preventing scratching or damage.
3. Unit is provided with six AA alkaline batteries.
4. Provide mounting surface, sufficient to support the fixture and loads on the fixture.
5. Provide rough-ins as shown on the roughing-in and dimensional drawing, including water supply, drain pipe and gravel drain well. (See rough-in details)
6. Completely flush water supply lines of all foreign debris, before connecting to the fixture.

INSTALLATION: (see drainage & mounting roughing-in)

1. Locate the unit over rough-ins on mounting pad, mark mounting holes in base flange.
2. Tilt the unit down on its side, next to the mounting location. Install ½" mounting anchors (by others). Optional -IAP (in-ground anchor plate) which is cast into the concrete, is available.
3. Make up 1-1/4" OD drain tube into the open ended DWV drain tube (by others). Connect the ½" male NPT fitting to a potable water supply. Then tilt the unit into place, making sure that the tubing is not pinched or kinked. Secure the base flange to the mounting pad.
4. Connect the battery pack to matching battery wire terminals. When connected the unit is active.
5. Test for leaks and proper operation, and then install the access panel.

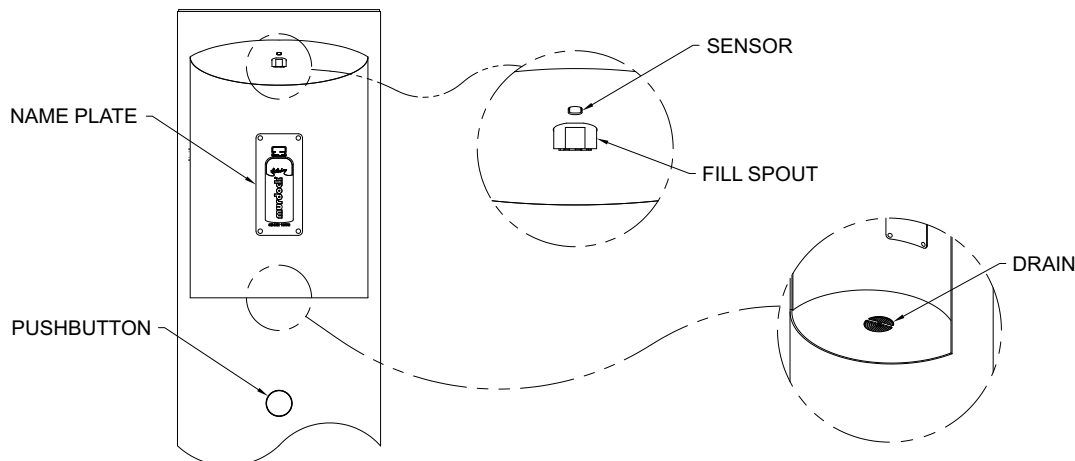
START UP:

Air within the bottle filler system or the structure supply piping will cause an irregular spout outlet stream until purged out by incoming water. Press and hold pushbutton until steady water stream is achieved.

OPERATION INSTRUCTIONS:

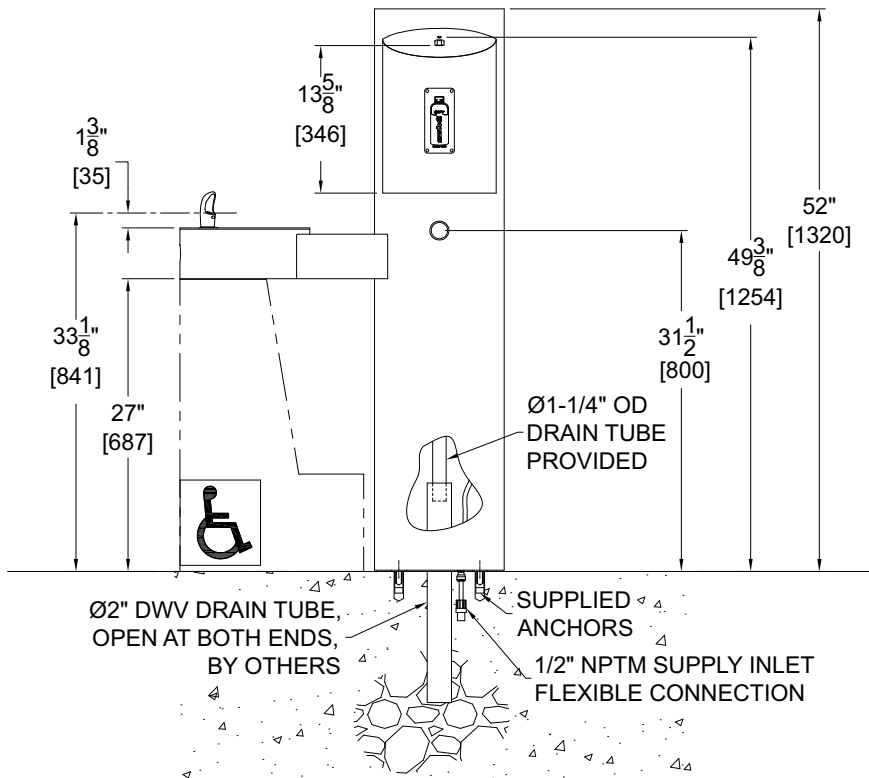
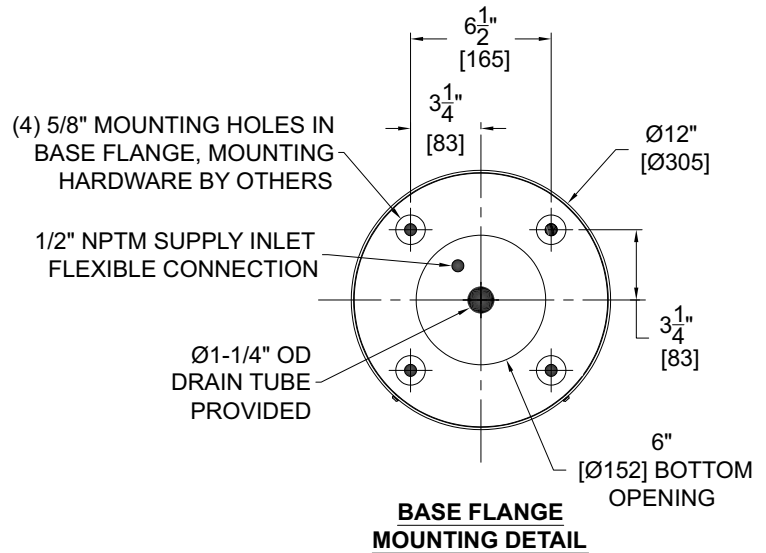
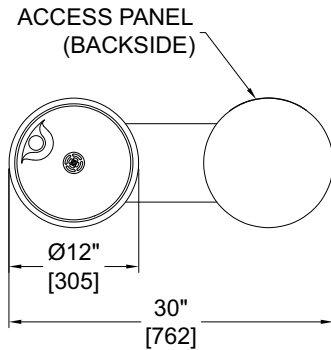
Hand operation: Hold container to be filled just below the filler tube in the center of the unit, then depress pushbutton. When the container is almost filled, release the pushbutton.

Sensor Operation: Hold container to be filled just below the sensor in the center of the filler spout and then move the container upward and water flow will start automatically. When the container is almost filled, lower the container below the sensor until the water stops flowing. (see label on the bottle filler)



GYM74

Rough-In & Installation Information



GENERAL NOTES:

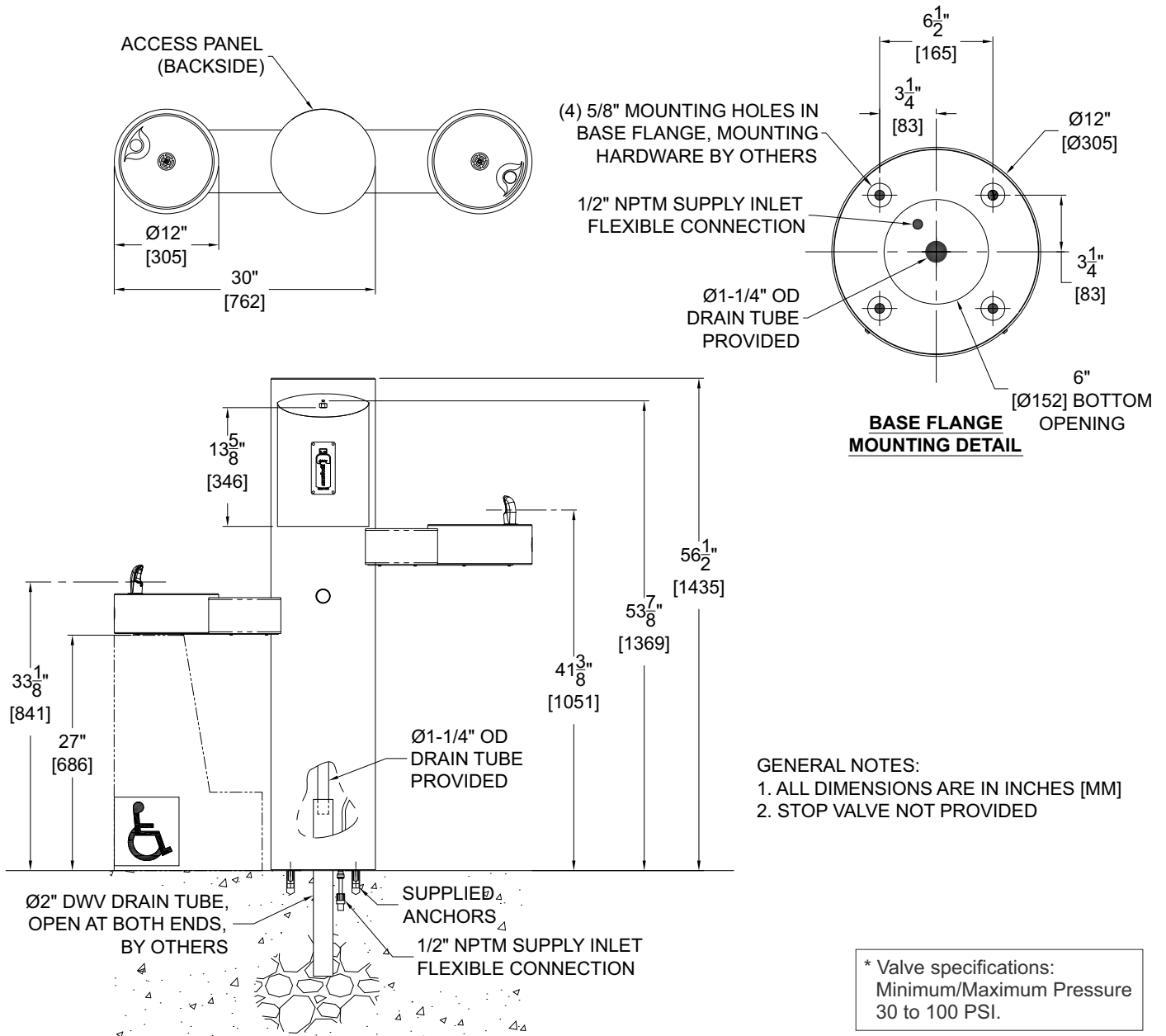
1. ALL DIMENSIONS ARE IN INCHES [MM]
2. STOP VALVE NOT PROVIDED

* Valve specifications:
Minimum/Maximum Pressure
30 to 100 PSI.

***NOTE:** Depending on code and design requirements, drain waste outlet below fixture may be open, French Drain (AKA Trench Drain) or a sanitary connection to waste piping. Installer and/or Specifier is responsible to verify local code requirements. Site preparation is the sole responsibility of the installer. Minimum requirements: Under drain opening, place a minimum of three to five cubic feet of porous gravel fill (no pea gravel or small stone). Local soil conditions may require more gravel for drainage.

GYQ84

Rough-In & Installation Information



***NOTE:** Depending on code and design requirements, drain waste outlet below fixture may be open, French Drain (AKA Trench Drain) or a sanitary connection to waste piping. Installer and/or Specifier is responsible to verify local code requirements. Site preparation is the sole responsibility of the installer. Minimum requirements: Under drain opening, place a minimum of three to five cubic feet of porous gravel fill (no pea gravel or small stone). Local soil conditions may require more gravel for drainage.

TROUBLESHOOTING:

1. RESTRICTED OR NO WATER FLOW:

- a. Ensure Water Supply service stop valve is fully open.
- b. Verify minimum 20 psig supply line flow pressure.
- c. Check for twist or kinks in spout tubing.
- d. Check the water inlet "Y" strainer. Sediment from the main supply can get trapped in the screen along with installation materials such as pipe dope and flux. The screen should be cleaned and checked on a regular basis and replace if needed.
- e. Flow control in solenoid valve outlet elbow clogged remove & clean.

SENSOR TROUBLESHOOTING:

1. IF LIGHT WITHIN SENSOR DOES NOT FLASH ONCE WHEN USER IS WITHIN RANGE:

- a. Verify 9VDC output of battery pack.
- b. Replace defective batteries.
- c. Sensor in "Security Mode" after 30 seconds of constant detection. Remove source of detection and wait 30 second before checking.
- d. Sensor is picking up a highly reflective surface. Eliminate cause of reflection and wait 30 seconds before checking.

2. IF LIGHT WITHIN SENSOR LENS FLASHES ONCE WHEN THE USER IS WITHIN RANGE:

- a. Repair bad connection from sensor to solenoid.
- b. There is debris or scale in the solenoid assembly. Remove solenoid, pull out plunger and spring. Clean with scale remover solution.
- c. There is debris or scale in center or two holes in convolution of the water diaphragm. Remove and clean.

CLEANING & MAINTENANCE GUIDE:

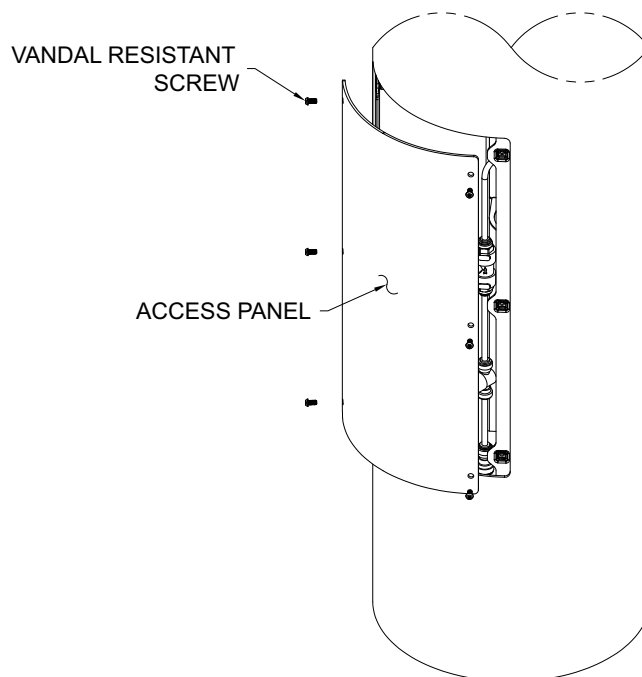
For Powder coated units: Units should be cleaned using a mild soap solution with a sponge or cotton cloth. Wipe down surfaces then rinse with clean water.

For Stainless steel units:

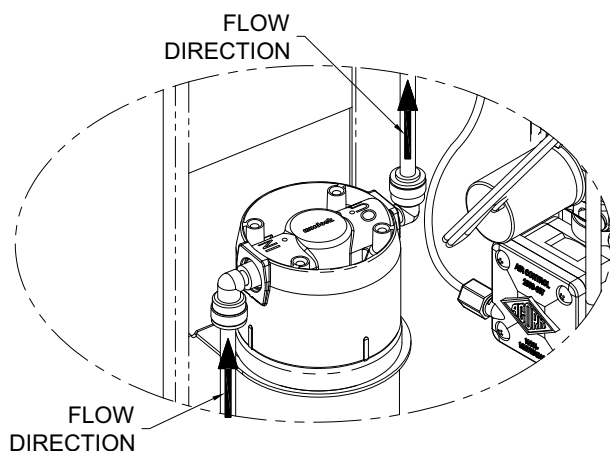
1. To remove water spots or rust spots, stainless steel cleaner/polish on a cloth is recommended.
2. If there are stubborn spots or if you wish to treat a scratch, synthetic abrasive general purpose pads such as scotch brite are recommended.
3. Apply stainless steel cleaner/polish to the synthetic abrasive pads and carefully rub the panel with the grain.
4. DO NOT use harsh chemicals, abrasive or petroleum based cleaners. Use of these will void the Murdock warranty. DO NOT use abrasives on powder coated units.
5. Stainless steel should be kept clean at all times. If a coating of stainless steel cleaner/polish is maintained, stainless steel surfaces will retain their new, clean & polished appearance indefinitely.
6. Periodically remove access panel of cooler and clean out inline "Y" strainer

FILTER CARTRIDGE INSTALLATION:

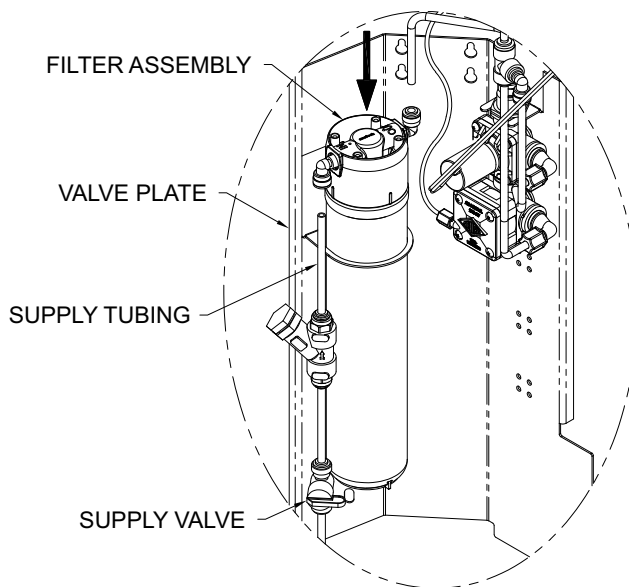
1. Remove Main Pedestal Access Panel by removing Vandal Resistant Screws.
2. Turn off Inlet Supply Valve. Cut the Supply Tubing following instructions on page 7.
3. Insert Filter assembly into Valve Assembly Plate.
5. Insert Supply Tubing into **INLET** elbow and other Tubing into **OUTLET** elbow.
6. Open Inlet Supply Valve slowly and activate Drinking Fountain or Bottle Filler and inspect for leaks. If present correct. If no leaks present, activate the unit and flush the filter: 6 Gallons (23 Liters)
 - a. If using Drinking Fountain Bubbler, flush for 12 Minutes
 - b. If using Bottle Filler, flush for 6 Minutes
7. After flushing reinstall the Access Panel and secure with Vandal Resistant Screws.



DETAIL NOT TO SCALE



DETAIL NOT TO SCALE

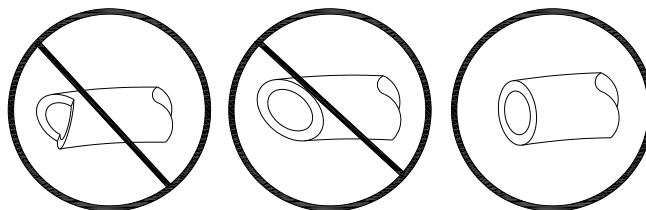


PUSH-IN FITTING INSTALLATION

NOTE: FITTINGS AND TUBE SHOULD BE KEPT CLEAN, BAGGED AND UNDAMAGED PRIOR TO INSTALLATION.

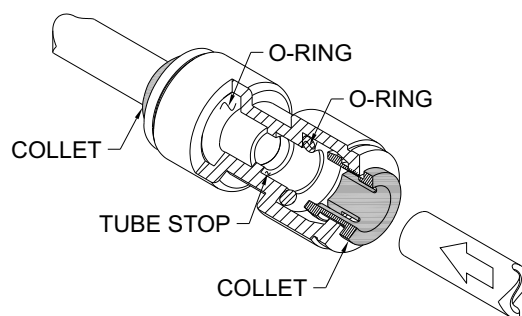
TO CUT TUBE:

Cut to fit length of 1/4" PE tubing and remove any burrs or sharp edges. Ensure that the outside diameter is free from score marks. Tube ends should be square.

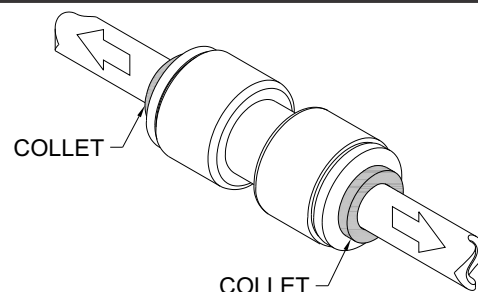


INSERTING THE TUBE:

1. Firmly and fully insert the tubing end into the push-in fitting up to the tube stop located approximately 1/2" deep.

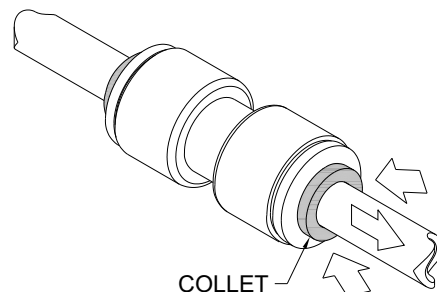


2. Pull on the fitted tubing to ensure it is secure. Tube should not come free from the fitting. Water test the connection assembly prior to leaving the site to ensure there are no leaks.



DISCONNECTING THE TUBE:

To disconnect the tube from the fitting ensure that the water line is depressurized. Push collet square towards the push-in fitting body and hold. While holding the collet in, pull on the PE tubing to remove from the push-in fitting.



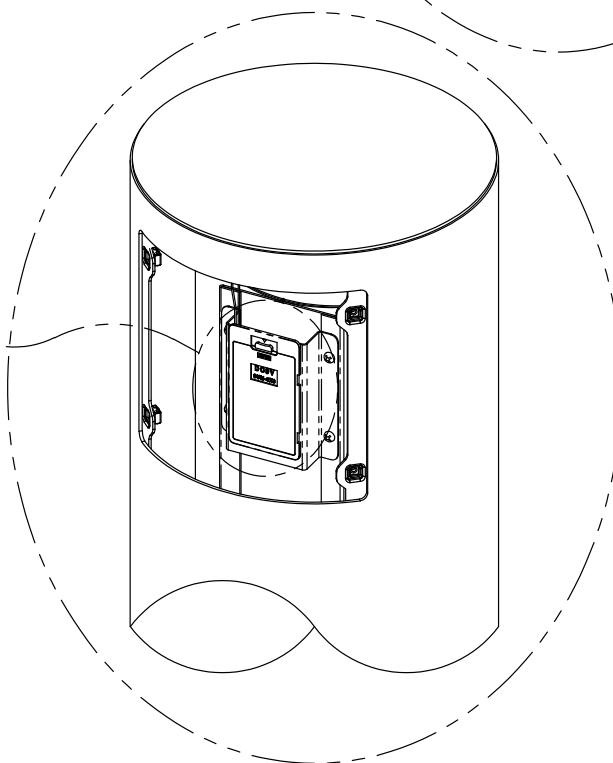
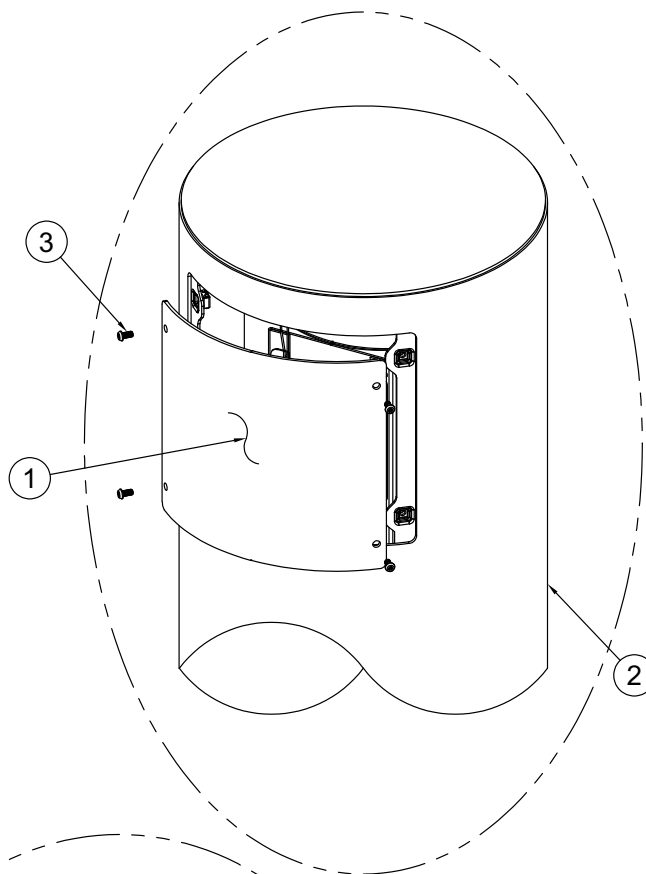
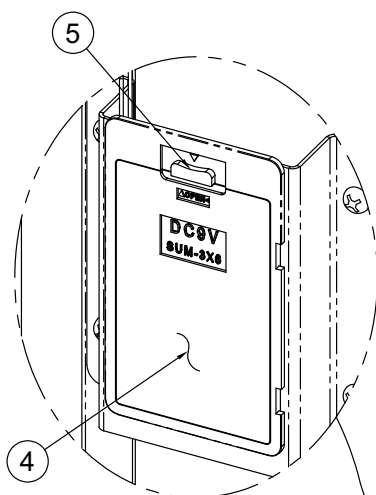
BATTERY REPLACEMENT:

1. Remove access panel **1** from housing **2** by removing vandal resistant screws **3**.

NOTE:

Do not disconnect the wires from the battery pack or battery pack from holder unless necessary.

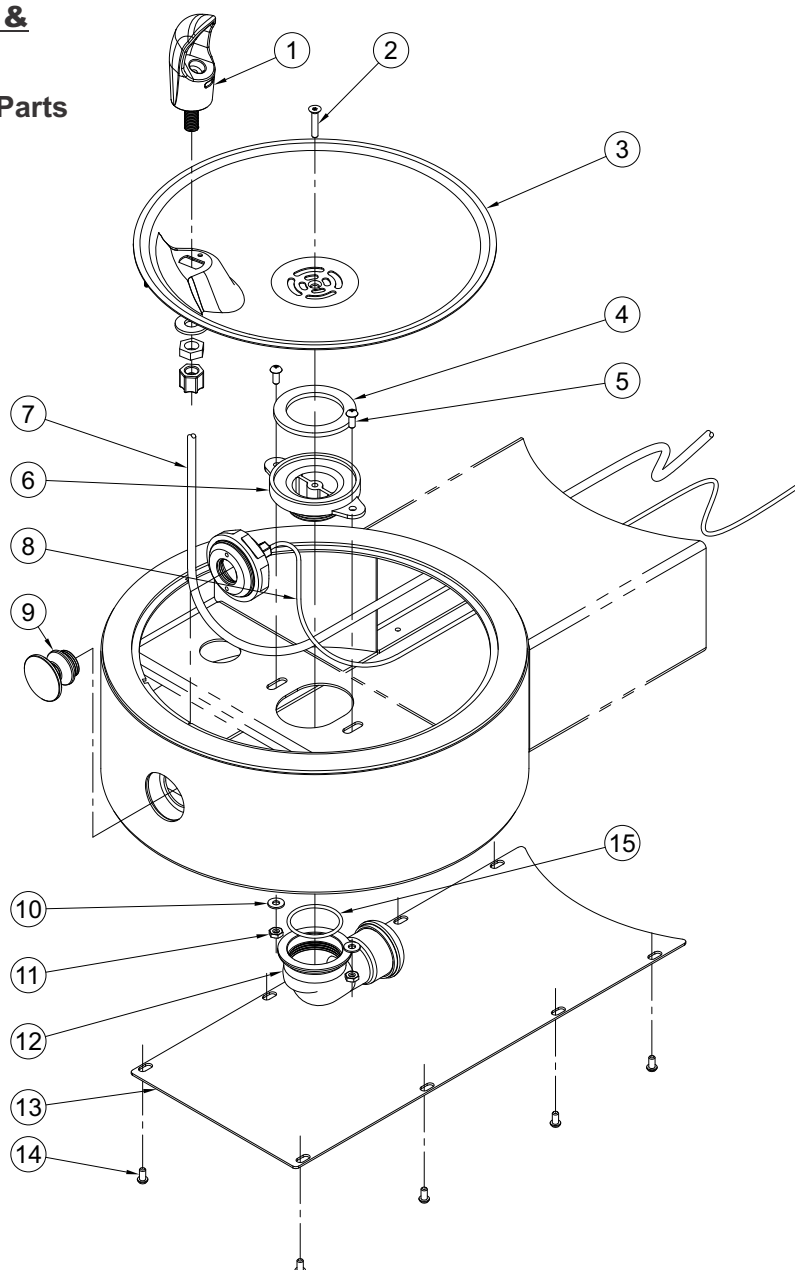
2. Remove battery pack cover **4** press down on button **5** and swing cover **4** downward.
3. Replace the six alkaline AA batteries while observing polarity.
4. Reinstall battery pack cover **4**, ensure full closed. Test for function.
5. Reinstall access panel **1** to housing **2** with vandal resistant screws **3**.



- 1 Bottle Filler Access Panel
- 2 Bottle Filler Housing
- 3 Vandal Resistant Screws
- 4 Battery Pack
- 5 Battery Pack Cover

**GYM74 / GYQ84 BASIN &
EXTENDED ARMS:**

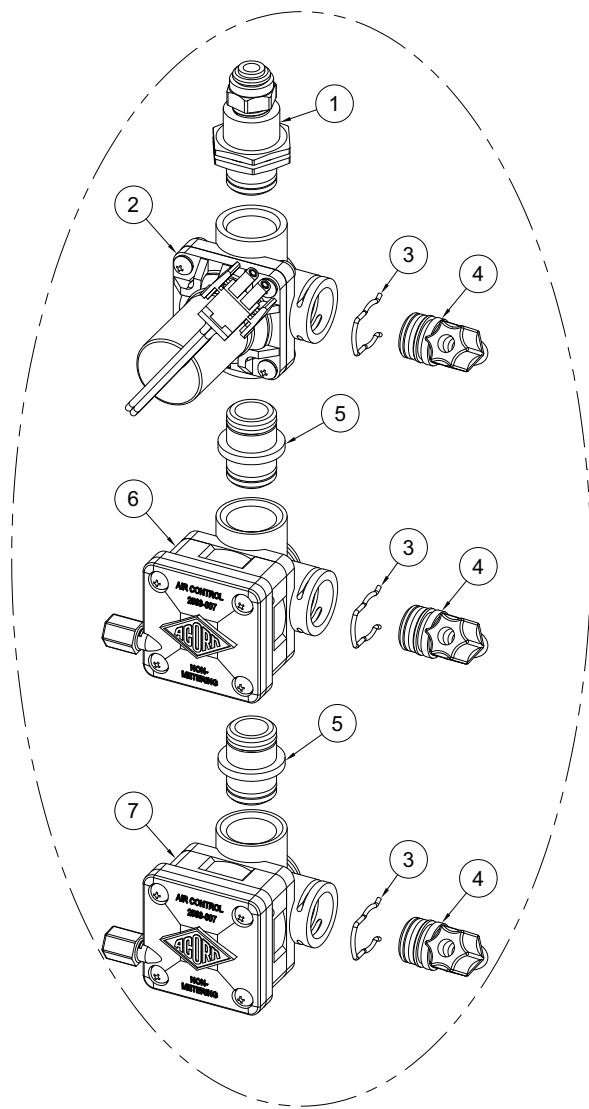
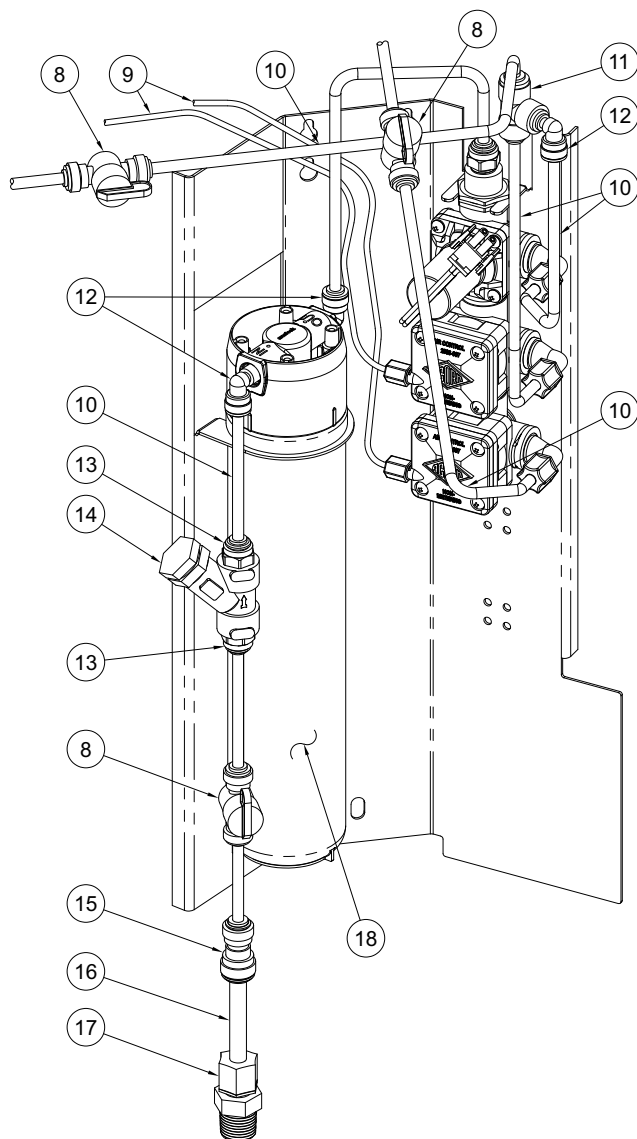
Drinking Fountain, Repair Parts



ITEM	PART NUMBER	DESCRIPTION	ITEM	PART NUMBER	DESCRIPTION
1	7000-012-001	DRINKING BUBBLER ASSEMBLY	9	7002-125-001	1-1/2" DIAMETER PUSHBUTTON ASSEMBLY
2	0152-010-000	#10-32 UNF x 1" LONG HEX FLAT HEAD SCREW	10	0331-004-000	#10 FLAT WASHER, SS
3	7007-011-001	11" DIAMETER ROUND BOWL, SS	11	0302-004-000	#10-32 UNF HEX NUT, SS
4	7000-006-000	FLAT FOAM ADAPTER GASKET	12	7000-017-001	1-1/4" CLOSE ELBOW, SLIP JOINT
5	0116-003-000	#10-32 UNF x 1/2" LONG PHILLIPS HEAD SCREW	13	CONTACT FACTORY	ACCESS PLATE, ROUND SIDE MOUNT
6	7000-005-199	1-1/4" NPSM DRAIN ADAPTER	14	0112-001-000	#10-32 UNF x 3/8" LONG HEX BUTTON HEAD SCREW
7	2169-010-199	1/4" OD LDPE RISER TUBING	15	0401-128-000	O-RING, WASTE ADAPTER
8	2150-000-000	1/8" OD LDPE AIR TUBING			

GYM74 VALVE ASSEMBLY:

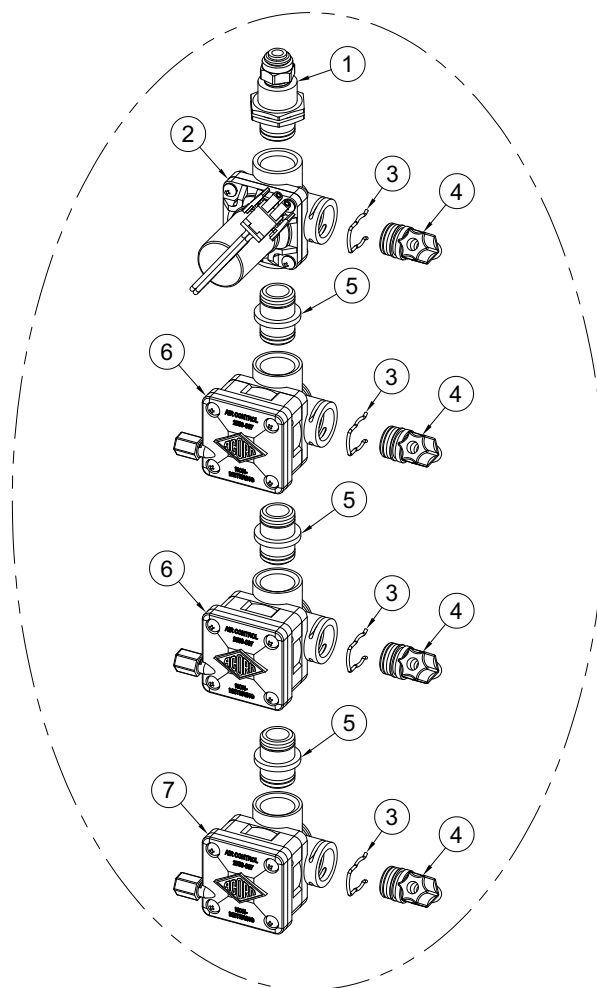
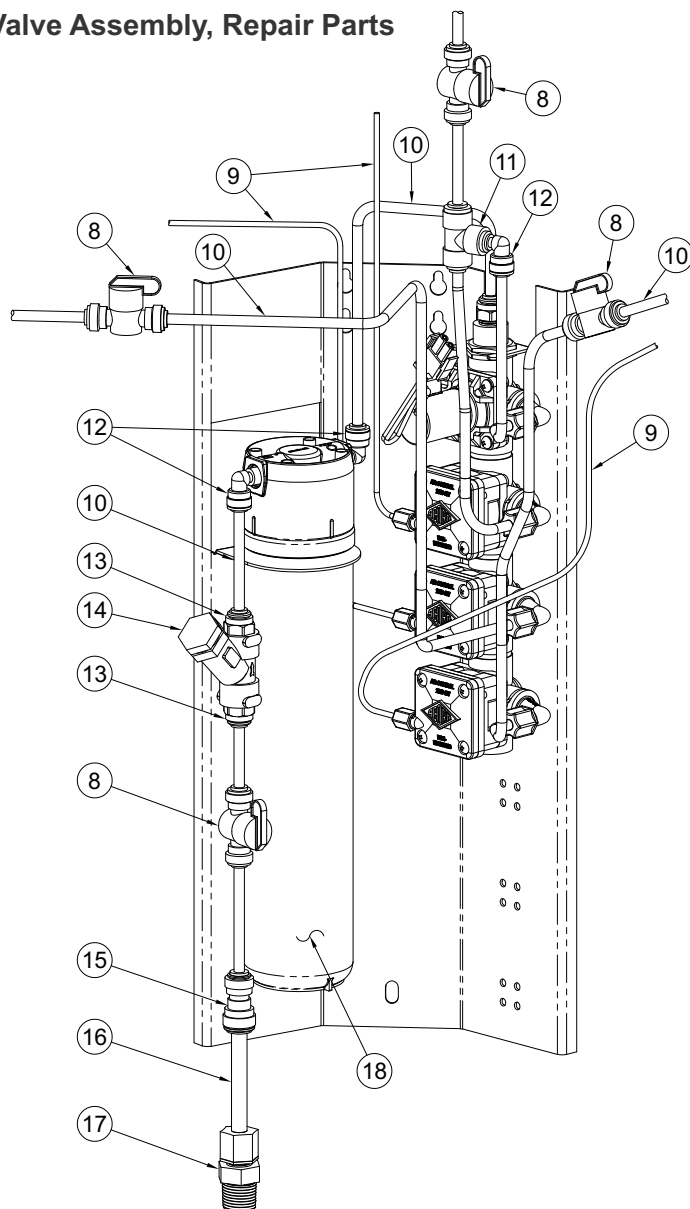
Valve Assembly, Repair Parts



ITEM	PART NUMBER	DESCRIPTION	ITEM	PART NUMBER	DESCRIPTION
1	2800-129-001	1/4" PUSH-IN CONNECT ADAPT ASSY	10	2169-010-199	1/4" OD LLDPE TUBING (BLUE) 10 FT.
2	2570-130-001	9VDC SOLENOID VALVE ASSEMBLY	11	1895-710-000	1/4": O.D. UNION TEE
3	0326-100-000	RETAINING CLIP, AIR-CONTROL VALVE	12	1895-709-000	1/4" OD x 1/4" OD STEM PUSH-IN ELBOW
4	2570-051-001	1/4" OD PLASTIC ELBOW ASSEMBLY	13	1895-125-000	1/4" NPT x 1/4" O.D. PUSH-IN CONNECTION
5	2570-028-001	MALE x MALE O-RING CONNECTOR ASSEMBLY	14	7000-021-000	1/4" NPT "Y" STRAINER
6	2570-100-001	NON-METERING AIR-CONTROL VALVE ASSEM	15	1895-123-000	1/4" O.D. x 3/8" O.D. PUSH-IN UNION CONNECTION
7	2570-101-001	NON-METERING AIR-CONTROL VALVE ASSEM (LH)	16	2170-000-000	3/8" O.D. PE TUBING
8	7000-420-000	1/4" OD PUSH-IN 1/4 TURN SHUT-OFF VALVE	17	1895-005-000	3/8" O.D. x 1/2" NPT MALE CONNECTOR
9	2150-010-199	1/8" OD LDPE AIR TUBING (10 FT.)	18	7012-347-000	RWF3000 3000 GALLON REPLACEMENT FILTER

GYQ84 VALVE ASSEMBLY:

Valve Assembly, Repair Parts

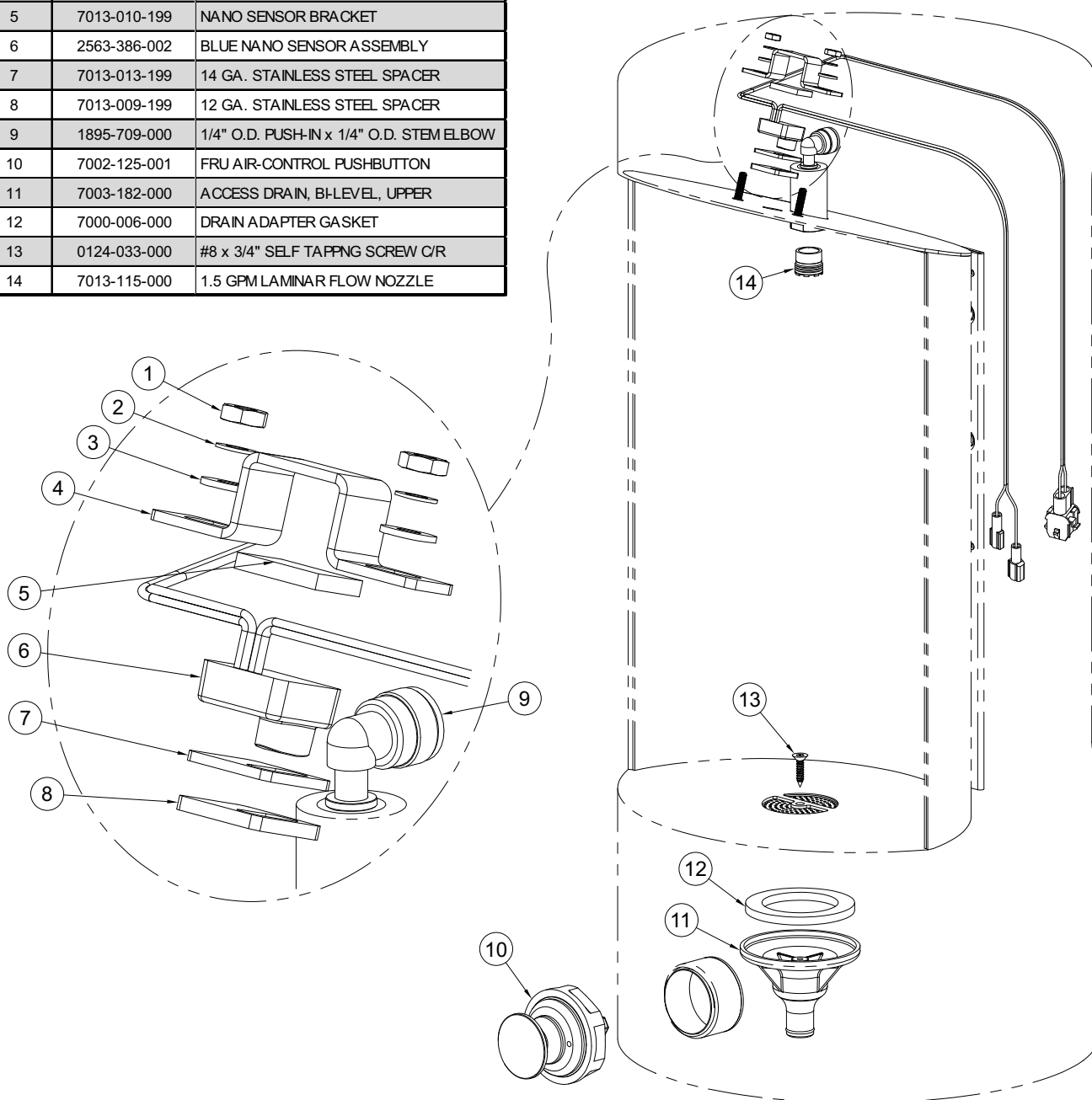


ITEM	PART NUMBER	DESCRIPTION	ITEM	PART NUMBER	DESCRIPTION
1	2800-129-001	1/4" PUSH-IN CONNECT ADAPT ASSY	10	2169-010-199	1/4" OD LLDPE TUBING (BLUE) 10 FT.
2	2570-130-001	9VDC SOLENOID VALVE ASSEMBLY	11	1895-710-000	1/4": O.D. UNION TEE
3	0326-100-000	RETAINING CLIP, AIR-CONTROL VALVE	12	1895-709-000	1/4" OD x 1/4" OD STEM PUSH-IN ELBOW
4	2570-051-001	1/4" OD PLASTIC ELBOW ASSEMBLY	13	1895-125-000	1/4" NPT x 1/4" O.D. PUSH-IN CONNECTION
5	2570-028-001	MALE x MALE O-RING CONNECTOR ASSEMBLY	14	7000-021-000	1/4" NPT "Y" STRAINER
6	2570-100-001	NON-METERING AIR-CONTROL VALVE ASSEM	15	1895-123-000	1/4" O.D. x 3/8" O.D. PUSH-IN UNION CONNECTION
7	2570-101-001	NON-METERING AIR-CONTROL VALVE ASSEM (LH)	16	2170-000-000	3/8" O.D. PE TUBING
8	7000-420-000	1/4" OD PUSH-IN 1/4 TURN SHUT-OFF VALVE	17	1895-005-000	3/8" O.D. x 1/2" NPT MALE CONNECTOR
9	2150-010-199	1/8" OD LDPE AIR TUBING (10 FT.)	18	7012-347-000	RWF3000 3000 GALLON REPLACEMENT FILTER

BOTTLE FILLER ASSEMBLY:

Repair Parts

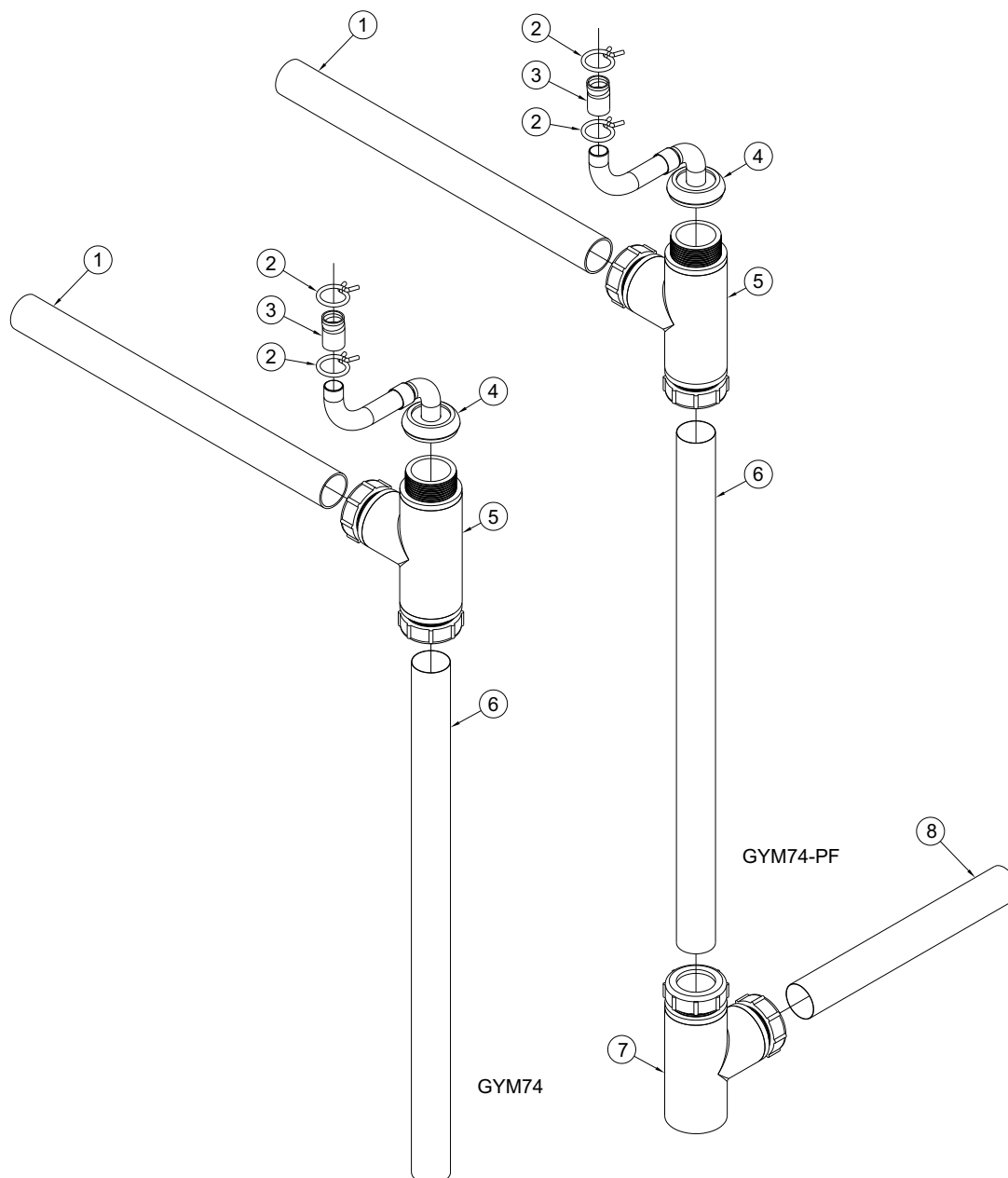
ITEM	PART NUMBER	DESCRIPTION
1	0302-003-000	#8-32 UNF HEX NUT, SS
2	6527-108-000	#8 INTERNAL TOOTH LOCKWASHER
3	0331-023-000	#8 FLAT WASHER, SS
4	7013-019-199	FOAM TAPE 7/8" x 1/5" x 1/8"
5	7013-010-199	NANO SENSOR BRACKET
6	2563-386-002	BLUE NANO SENSOR ASSEMBLY
7	7013-013-199	14 GA. STAINLESS STEEL SPACER
8	7013-009-199	12 GA. STAINLESS STEEL SPACER
9	1895-709-000	1/4" O.D. PUSH-IN x 1/4" O.D. STEM ELBOW
10	7002-125-001	FRU AIR-CONTROL PUSHBUTTON
11	7003-182-000	ACCESS DRAIN, BI-LEVEL, UPPER
12	7000-006-000	DRAIN ADAPTER GASKET
13	0124-033-000	#8 x 3/4" SELF TAPPING SCREW C/R
14	7013-115-000	1.5 GPM LAMINAR FLOW NOZZLE



GYM74 WASTE ASSEMBLY:

**Connections and Assembly,
Repair Parts**

ITEM	PART NUMBER	DESCRIPTION
1	7000-111-199	1-1/4" OD x 14" LONG DRAIN TUBE
2	7003-184-000	7/8" SPRING HOSE CLAMP
3	7003-183-000	ANSI/AHAM CERT FLEX HOSE, 5/8" x 7/8"
4	4125-160-003	1-1/4" OD TO 5/8" DRAIN FITTING
5	7002-018-001	1-1/4" OD TEE ASSY, BOTTLE FILLER
6	7000-112-199	1-1/4" OD x 20-1/2" LONG DRAIN TUBE
7	7002-011-001	1-1/4" OD TEE ASSY
8	7000-108-199	1-1/4" OD x 8-1/4" LONG DRAIN TUBE



GYQ84 WASTE ASSEMBLY:

**Connections and Assembly,
Repair Parts**

ITEM	PART NUMBER	DESCRIPTION
1	7007-521-199	1-1/4" OD x 14-5/8" LONG DRAIN TUBE
2	7003-184-000	7/8" SPRING HOSE CLAMP
3	7003-183-000	ANSI/AHAM CERT FLEX HOSE, 5/8" x 7/8"
4	4125-160-003	1-1/4" OD TO 5/8" DRAIN FITTING
5	4125-161-002	1-1/4" OD DOUBLE TEE & ELBOW ASSY
6	1802-100-000	1-1/4" SPIGOT BY COMPRESSION
7	7002-036-199	1-1/4" OD x 21-1/4" LONG DRAIN TUBE
8	7002-011-001	1-1/4" OD TEE ASSY
9	7000-109-199	1-1/4" OD x 9-1/4" LONG DRAIN TUBE

