

## INSTALLATION INSTRUCTIONS FOR HYDRANT M-75 & M-E75

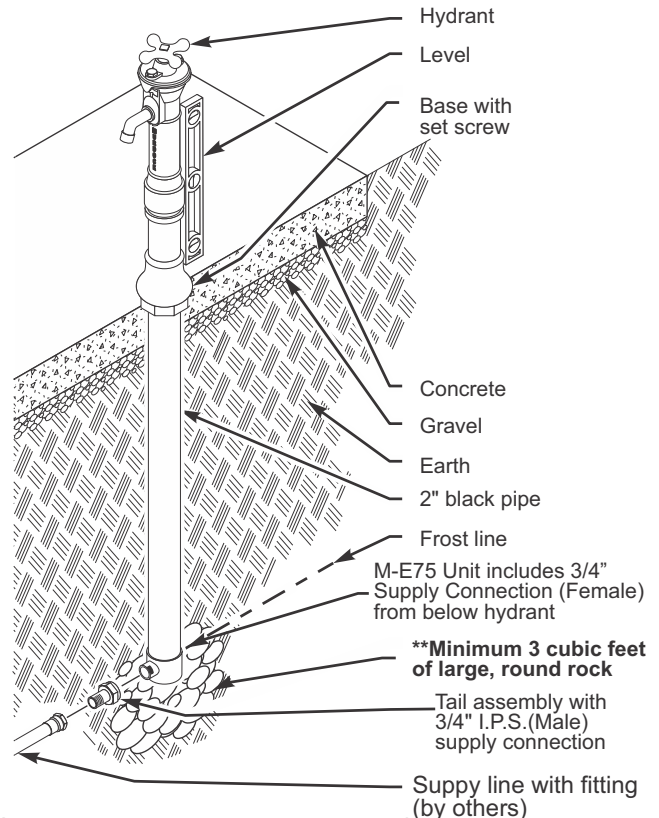
Prepare trench for Water-Supply line. Below hydrant location, prepare hole to trench depth and large enough for a person to work. Lay Water-Supply Line and Waste Line (if required) into trench, allowing extra line length to be trimmed during hook-up. Depending on design and code requirements, lay in drain line also.

Install Hydrant fully assembled as shipped. Position Hydrant at desired location. Brace Hydrant by laying two boards across hole and under Hydrant Base, one on either side of outer casing. To ensure plumb installation, place a bubble level against Hydrant and adjust bracing boards until unit is plumb.

Purge Water-Supply Line. Connect Water-Supply Line, trimming line length as necessary. Supply water pressure shall not exceed 85 psi. If necessary, install Pressure-Reducing Valve in Supply Line. Wrap bottom Drain opening with Filter Fabric. **IMPORTANT: \*\*place a minimum of three cubic feet (0.085 cubic meter) of large round rock under drain opening.** Check local codes. Local soil conditions may require more rock for drainage.

Back-fill Trench and Hole. Compact back-filled earth. Remove bracing boards. If necessary, loosen set screw in base and adjust vertical position of base on outer casing so that bottom of flared part of base is at grade level.

If Concrete Slab is desired, prepare Hole surrounding Hydrant to accommodate Concrete Slab. Spread and compact Gravel as necessary. Pour Concrete up to bottom of flared part of Hydrant Base. Finish concrete as necessary.



## MAINTENANCE INSTRUCTIONS FOR HYDRANT M-75 & M-E75

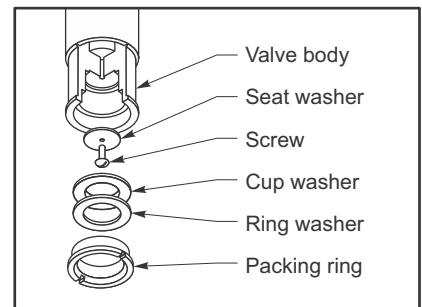
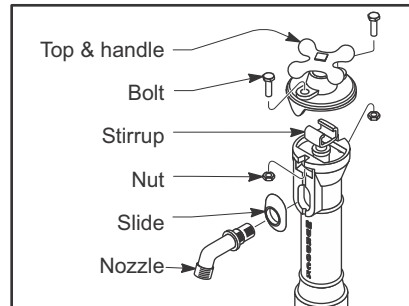
All normal maintenance is done from above grade. Washers should normally be replaced annually. Refer to "Replacing Washers". Remove *Bolts* and *Nuts* securing *Top* to *Stock*. Lift *Top* from *Stock*, sliding *Screw Flange* under *Top* from *Stirrup*. Unscrew and remove *Nozzle* from *Stock*, taking care to catch *Slide*. Take hold of *Stirrup* and raise *Supply-Line Assembly* out of *Stock-and-Outer-Casing Assembly*.

At bottom of *Supply-Line Assembly*, unscrew *Packing Ring* from *Valve Body* and remove *Ring Washer* and *Cup Washer*. Remove *Seat-Washer Screw* and *Seat Washer*. Replace *Seat Washer*. Replace *Cup Washer* and *Ring Washer*, and *Screw Packing Ring* into *Valve Body*.

Gently lower *Supply-Line Assembly* into *Stock*. As *Stirrup* approaches top of *Stock*, lower assembly very carefully to ensure that *Valve Body* at bottom of assembly seats properly over *valve Stem* underground.

Rotate *Stirrup* to ensure that *Nozzle* opening in *Tee* is oriented toward opening in *Stock*. Make certain that tee end of *Nozzle* is inserted through slide with tongue of *Slide* oriented toward *Tee* end of *Nozzle*. Apply pipe-joint compound to *Tee* end of *Nozzle*, insert *Tee* end of *Nozzle* through opening in *Stock*, and screw *Nozzle* into *Tee*.

Make certain that long side of *Slide* is oriented upward and that *Slide Tongue* fits into groove in *Stock*. Tighten *Nozzle*, making certain that *Nozzle Outlet* is oriented downward.



## REPLACEMENT OF WASHERS

1. Turn off the water Supply to the Hydrant
2. Remove the Nozzle and Top Bolts. The Nozzle is removed by turning the locknut counterclockwise.
3. Pull complete inner works assembly out of hydrant casing.
4. The Washers are located in the brass valve body at the lower end of the inner works.
5. Remove valve packing ring, cup and ring washers with a flat screwdriver and the screw that holds the seat washer in place.
6. Replace seat, cup and ring washers; tighten valve packing ring hand tight so that the cup and ring washers stay in place.
7. Re-assemble the hydrant in the reverse order of disassembly.

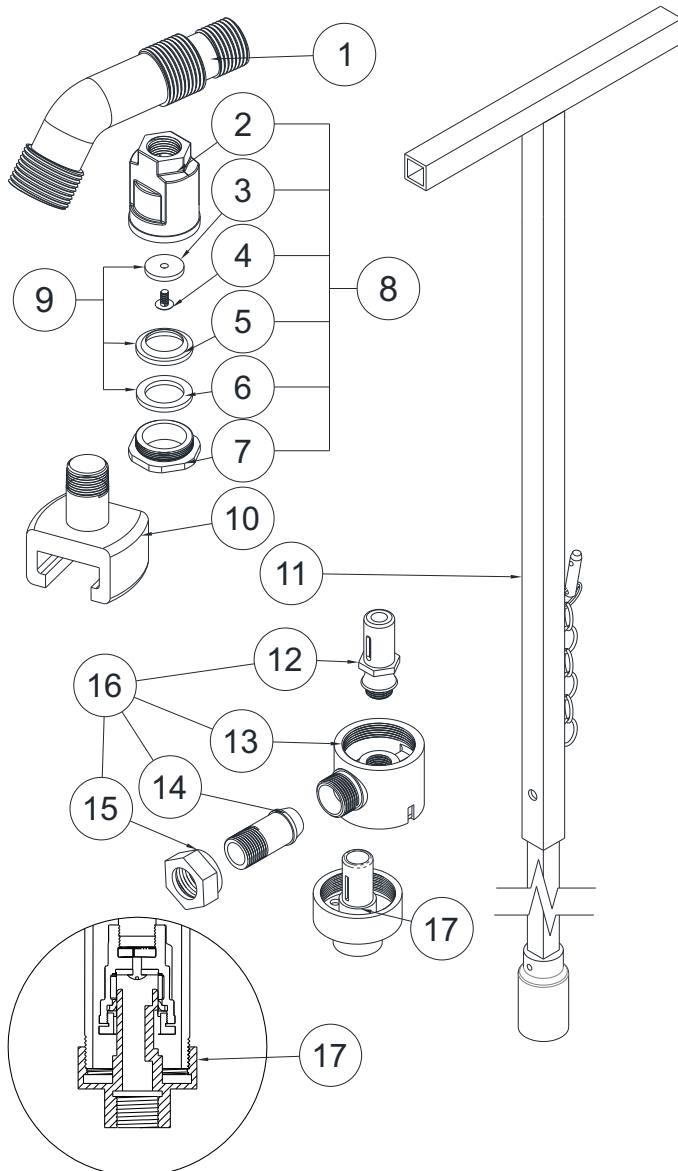
For more assistance please follow the link located Below

Please refer to the Link or QR code provided.

[TROUBLESHOOTING VIDEO](#)



## REPLACEMENT PARTS, KITS, & TOOLING



### ! IMPORTANT

**NOTE:**

1. When replacing Gasket lather with Vaseline

**Items 1-11** are intended for **Both M-75 & M-E75**

**M-75 Unit:** Items 12-16 are intended for this unit

**M-E75 Unit:** Item 17 is intended for this unit

ITEM	Part number	Description
1	4100-022-199	HYDRANT NOZZLE, BRASS
2	4100-141-199	VALVE BODY 3/4"
3	4100-084-000	SEAT WASHER
4	4100-162-000	SEAT WASHER SCREW
5	4100-082-000	LEATHER CUP WASHER 3/4"
6	4100-083-000	RING WASHER
7	4100-161-199	PACKING RING 3/4"
8	4100-141-001	VALVE BODY KIT
9	4100-082-001	LEATHER WASHER KIT
10	4100-168-199	HYDRANT STIRRUP
11	4102-203-001	VALVE REMOVAL TOOL
12	4100-163-199	1-1/8" HEX, ALLOY 693
13	4100-064-199	BOTTOM CONNECTION
14	4100-060-199	TAIL 3/4" SUPPLY
15	4100-061-199	9-H TAIL NUT 3/4" SUPPLY
16	4100-064-001	VALVE STEM & TAIL KIT
17	4100-127-199	M-E75 BOTTOM CONNECTION 3/4"