

INSTALLATION INSTRUCTIONS FOR HYDRANT M-175

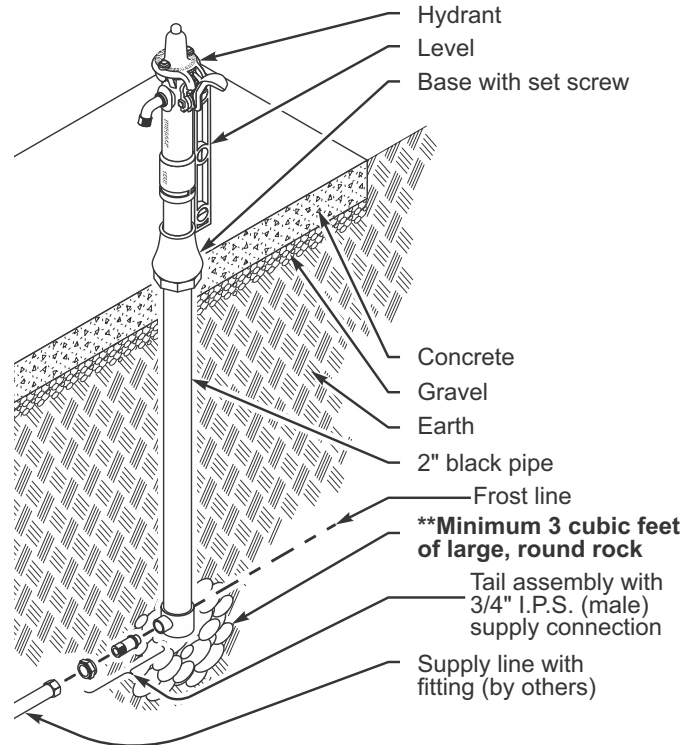
Prepare trench for water-supply line. Below hydrant location, prepare hole to trench depth and large enough for a person to work. Lay water-supply line and waste line (if required) into trench, allowing extra line length to be trimmed during hook-up. Depending on design and code requirements, lay in drain line also.

Install hydrant fully assembled as shipped. Position hydrant at desired location. Brace hydrant by laying two boards across hole and under hydrant base, one on either side of outer casing. To ensure plumb installation, place a bubble level against hydrant and adjust bracing boards until unit is plumb.

Purge water-supply line. Connect water-supply line, trimming line length as necessary. Wrap bottom drain opening with filter fabric. **IMPORTANT: **Place a minimum of three cubic feet (0.085 cubic meter) of large round rock under drain opening.** Check local codes. Local soil conditions may require more rock for drainage.

Back-fill trench and hole. Compact back-filled earth. Remove bracing boards. If necessary, loosen set screw in base and adjust vertical position of base on outer casing so that bottom of flared part of base is at grade level.

If concrete slab is desired, prepare hole surrounding hydrant to accommodate concrete slab. Spread and compact gravel as necessary. Pour concrete up to bottom of flared part of hydrant base. Finish concrete as necessary.



MAINTENANCE INSTRUCTIONS FOR HYDRANT M-175

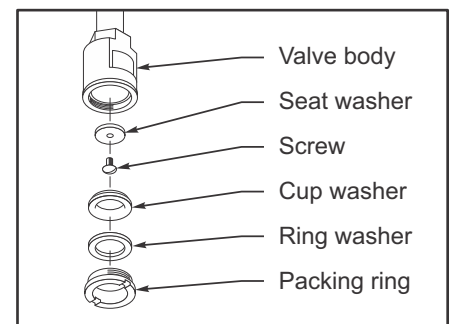
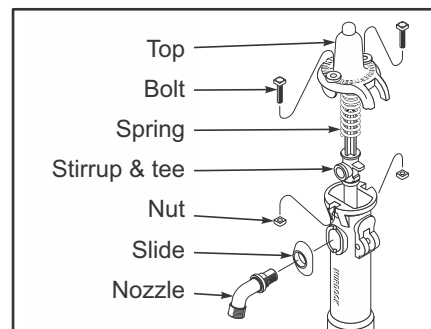
All normal maintenance is done from above grade. *Washers* should normally be replaced annually. Remove *Handle* and install *Murdock-Super Secur "Lot O' Help"* tool. Remove *Bolts* and *Nuts* securing top to *Stock*, and remove *Top* from *Stock*. Unscrew and remove *Nozzle* from *Stirrup* and *Tee*, taking care to catch *Slide*. Take hold of *Stirrup* and *Tee*, and raise *Supply Line Assembly* out of *Stock-and-Outer-Casing Assembly*.

At bottom of *Supply-Line Assembly*, unscrew *Packing Ring* from *Valve Body* and remove *Ring Washer* and *Cup Washer*. Remove *Seat-Washer Screw* and *Seat Washer*. Replace *Seat Washer*. Replace *Cup* and *Ring Washers*, and screw *Packing Ring* into *Valve Body*.

Lower *Supply-Line Assembly* into *Stock*. As *Stirrup* and *Tee* approaches top of *Stock*, lower *Assembly* carefully to ensure that *Valve Body* seats properly over *Valve Stem*.

Ensure that opening in *Tee* is oriented toward opening in *Stock*. Apply pipe joint compound to threaded end of *Nozzle*, insert through *Slide* and opening in *Stock*, and screw *Nozzle* into *Tee*. Make certain that long end of *Slide* is oriented downward and that *Slide Tongue* fits into groove in stock. Tighten *Nozzle*, making certain that *Nozzle Outlet* is oriented downward.

Install *Spring* over *Stirrup* and *Tee*, and replace top over *Spring*. Fasten *Bolts* and *Nuts*. Remove *"Lot O' Help"* tool and replace *Handle*, making certain that nub on *Handle* engages *Stirrup* properly.



REPLACING LEATHER WASHERS

1. Turn off the water Supply to the Hydrant
2. Remove the Nozzle and Top Bolts. The Nozzle is removed by turning the locknut counterclockwise.
3. Pull complete inner works assembly out of hydrant casing.
4. The Washers are located in the brass valve body at the lower end of the inner works.
5. Remove valve packing ring, cup and ring washers with a flat screwdriver and the screw that holds the seat washer in place.
6. Replace seat, cup and ring washers; tighten valve packing ring hand tight so that the cup and ring washers stay in place.
7. Re-assemble the hydrant in the reverse order of disassembly.

Please refer to the Link or QR code provided.

For maintenance and troubleshooting

<https://www.youtube.com/watch?v=go2WSoZnGZ4>



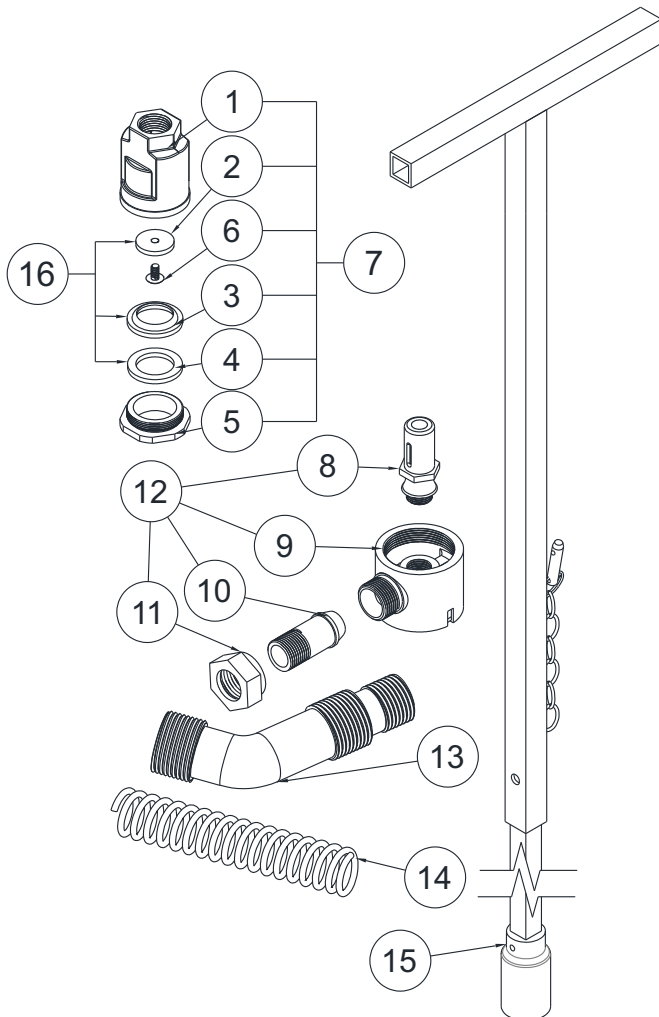
For more assistance please follow the link located to the right

REPLACEMENT VALVE STEM AND TAIL ASSEMBLY



IMPORTANT

NOTE: When replacing Gaskets lather with Vaseline



ITEM	Part number	Description
1	4100-141-199	VALVE BODY 3/4"
2	4100-084-000	SEAT WASHER
3	4100-082-000	LEATHER CUP WASHER 3/4"
4	4100-083-000	RING WASHER
5	4100-161-199	PACKING RING 3/4"
6	4100-162-000	SEAT WASHER SCREW
7	4100-141-001	VALVE BODY KIT
8	4100-163-199	1-1/8" HEX, ALLOY 693
9	4100-064-199	BOTTOM CONNECTION
10	4100-060-199	TAIL 3/4" SUPPLY
11	4100-061-199	9-H TAIL NUT 3/4" SUPPLY
12	4100-064-001	VALVE STEM & TAIL KIT
13	4100-022-199	HYDRANT NOZZLE, BRASS
14	4100-045-000	SPRING
15	4102-203-001	VALVE REMOVAL TOOL
16	4100-082-001	LEATHER WASHER KIT



IMPORTANT

NOTE: Parts are not shown to scale