

A172-UG Series / A172-UG-VR Series & A172-UG-SO Series
Universal Bi-Level, Barrier Free, Wall Mounted Drinking Fountain

MODEL SERIES:

A172100F-UG / A178400F-UG / A172100S-UG / A172400S-UG
172100F-UG-VR / A172400F-UG-VR / A172100S-UG-VR / A172400S-UG-VR
A172100F-UG-SO / A172400F-UG-SO / A172100S-UG-SO / A172400S-UG-SO



A172100F-UG



A172400S-UG-VR



A172100F-UG-SO



Maintenance Advantage™
Water Cooler by Murdock Manufacturing

NOTES TO INSTALLER:

1. Please leave this documentation with the owner of the fixture when finished.
2. Please read this entire booklet before beginning the installation.
3. Check your installation for compliance with plumbing, electrical and other applicable codes.
4. **IMPORTANT:** Water supply to unit from RO Reverse Osmosis filtration systems will damage fixture components and void product Warranty.

IMPORTANT

OPTIONAL BOTTLE FILLER INSTALLATION DETAILS (MODEL # BF11, BF12, BF11S, BF12S):

This series is offered with optional Bottle Filler unit (packaged / shipped separately) which requires Wall mounting.

Rough-In and Installation details for Bottle Fillers are shipped with the Bottle Filler specified.

For Installation details refer to the specified Bottle Filler Product Page Downloads using the following link:

www.murdockmfg.com/bottle-fillers

TECHNICAL ASSISTANCE TOLL FREE TELEPHONE NUMBER:

1.800.743.8259

Technical Assistance E-Mail: Fieldservice@acorneng.com

For current Warranty click hyperlink [Product Warranty](#) or visit: www.murdockmfg.com/terms-and-warranty

Murdock assumes no responsibility for use of void or suspended data. © Copyright Murdock, City of Industry, CA Member of Morris Group International. Please visit www.murdockmfg.com for most current specifications.

COMPLIES WITH
STANDARDS



NSF/ANSI/CAN 61



Member of

MORRIS GROUP
INTERNATIONAL

murdock®
SINCE 1853

15125 Proctor Ave, City of Industry,
CA, 91746 U.S.A.
Phone 800-453-7465

www.murdockmfg.com

IMPORTANT

This Fixture is intended for indoor use only** and is not suitable for installation in an area where a water jet could be used as well as in environments where freezing may occur. A dielectric coupling must be used to connect the drinking fountain to the water supply.

NOTE: A nonmetallic coupler is furnished with this drinking fountain to meet this requirement.

****NOTE:** -VR Series units are rated for outdoors. Refer to page 5 for complete details and requirements.

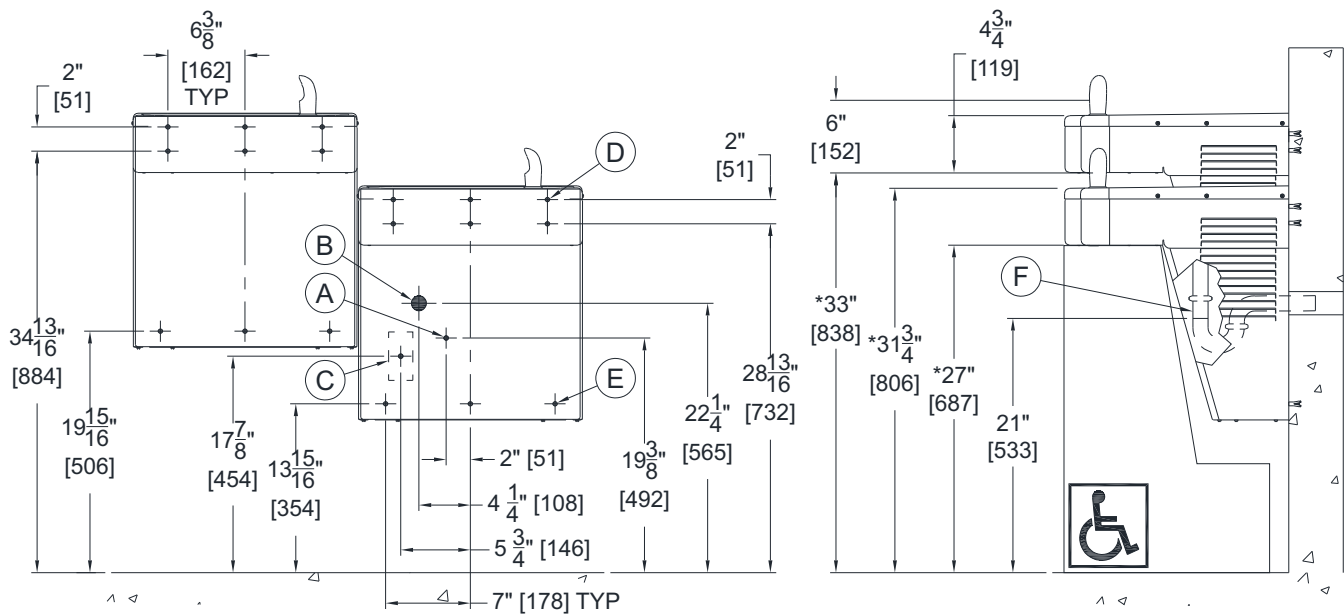
ROUGHING-IN AND DIMENSIONAL DRAWING

Prior to roughing consult with local, state, and federal codes for proper mounting height. All installation and service may only be performed by authorized personnel. No unauthorized persons shall have access to the service area.

Mounting Carrier: Refer to Installation details provided by Carrier manufacturer when unit is to be installed with In-Wall Mounting Carrier (provided by others). **Compatible J.R. Smith® brand Carrier model is Figure #0834-4P.**

A172-UG Series Universal Bi-Level Wall Mounted Drinking Fountain

(**Standard Configuration Left Unit High with Right Unit Low.** Mounting rough-ins are the same for -SO** and -VR models.)



GENERAL NOTES:

1. ALL DIMENSIONS ARE IN INCHES [MM]
- *2. DIMENSIONS SHOWN ARE FOR ADA ADULT HEIGHT. ADJUST VERTICAL DIMENSIONS AS NECESSARY TO COMPLY WITH FEDERAL, STATE & LOCAL CODES
3. STOP VALVE, P-TRAP & ELECTRICAL OUTLET NOT SUPPLIED

A. 3/8" O.D. SUPPLY INLET

B. WASTE OUTLET FOR P-TRAP BY OTHERS FOR PROVIDED 1-1/4" O.D. TAILPIECE

C. ELECTRICAL SERVICE ROUGH (SEE NOTE**)

D. Ø3/8" HANGER BRACKET PUNCHING, 6 PLACES TYP FOR ANCHORING HARDWARE BY OTHERS

E. Ø1/4" PUNCHING, 3 PLACES FOR ANCHORING HARDWARE BY OTHERS

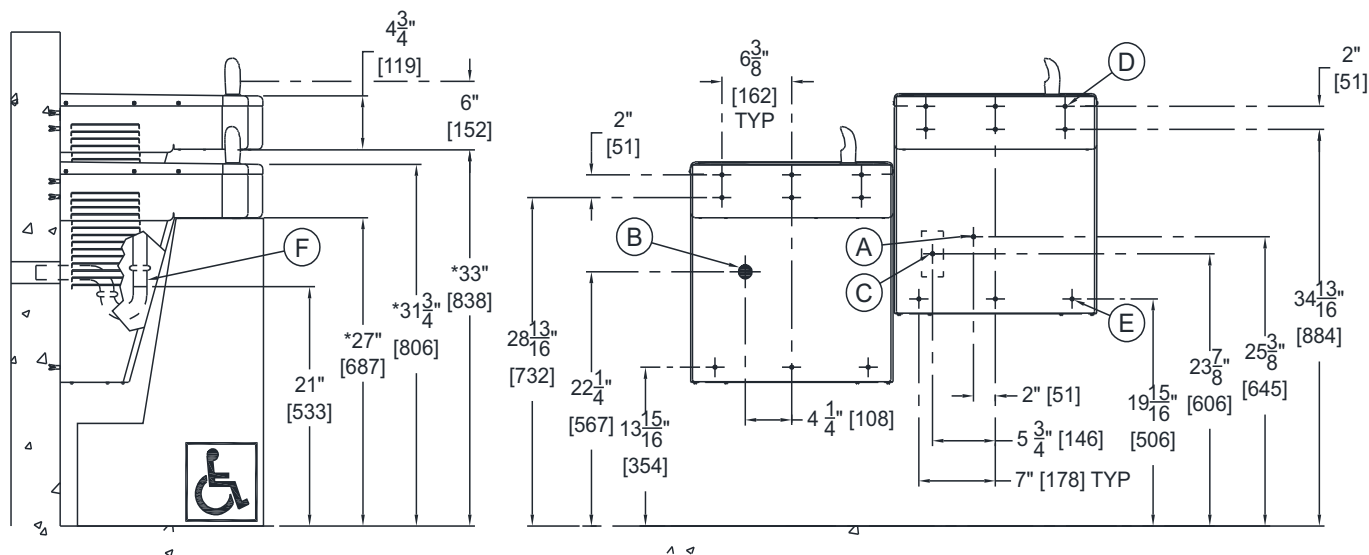
F. 1-1/4" [32] O.D. TAILPIECE FOR P-TRAP BY OTHERS

Electrical Requirements (Non Chilled):

For -SO Sensor Control,
or Bottle Filler with Sensor (Model BF12, BF12S):
- Provide Duplex Receptacle on GFCI Protected Circuit
- 115VAC, 60Hz, 1A

***NOTES:** Dimensions indicated * are for ADA frontal approach installation. Adjust vertical dimension * as required to comply with federal, state, and local codes. For Child ADA compliant parallel approach, decrease spout height to 30" maximum above finished floor. Provide Clear Floor Space as required. Compliance is subject to the interpretation and requirements of the local Code Authority.

A172-UG SERIES UNIVERSAL BI-LEVEL DRINKING FOUNTAIN - ALTERNATE
(NOTE! Alternate Configuration shown Left Unit Low with Right Unit High)



GENERAL NOTES:

1. ALL DIMENSIONS ARE IN INCHES [MM]
- *2. DIMENSIONS SHOWN ARE FOR ADA ADULT HEIGHT. ADJUST VERTICAL DIMENSIONS AS NECESSARY TO COMPLY WITH FEDERAL, STATE & LOCAL CODES
3. STOP VALVE, P-TRAP & ELECTRICAL OUTLET NOT SUPPLIED

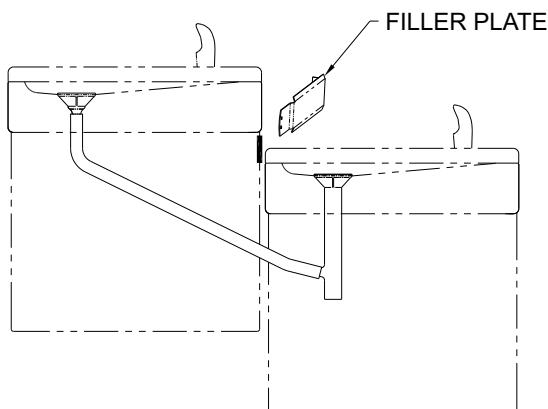
- A. 3/8" O.D. SUPPLY INLET
- B. WASTE OUTLET FOR P-TRAP BY OTHERS FOR PROVIDED 1-1/4" O.D. TAILPIECE
- C. ELECTRICAL SERVICE ROUGH (SEE NOTE**)
- D. Ø3/8" HANGER BRACKET PUNCHING, 6 PLACES TYP FOR ANCHORING HARDWARE BY OTHERS
- E. Ø1/4" PUNCHING, 3 PLACES FOR ANCHORING HARDWARE BY OTHERS
- F. 1-1/4" [32] O.D. TAILPIECE FOR P-TRAP BY OTHERS

NOTE: REFER TO NOTES ON PREVIOUS PAGE FOR ADDITIONAL DETAILS ON ELECTRICAL ROUGH-IN AND ADA.

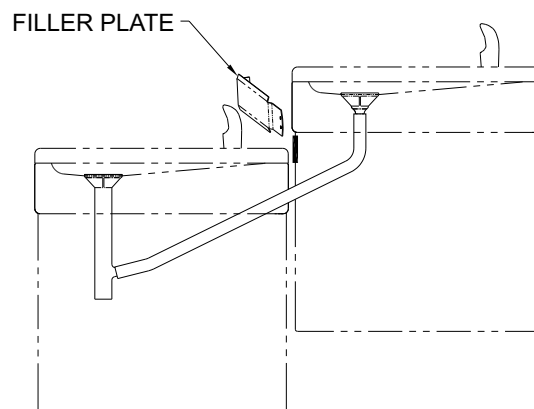
IMPORTANT:

1. Water supply is 3/8" Outside Diameter copper tube. Waste is 1-1/4" Outside Diameter.
2. Completely flush supply lines of all foreign debris before connecting to fixture. Water cooler designed to not affect taste, odor, color, or sediment. Optional water filter (WF1) is available should any of these problems arise from the water supply.
3. Do **NOT** solder copper tube when inserted into the coupler as damage to the o-ring will result.
4. All burrs must be removed from outside of cut tubes before inserting into coupler or other components.
5. **WARNING: Warranty is voided if installation** is not made following current Murdock Manufacturing installation instructions and if components are assembled to the fixture that is not approved by Acorn Engineering.
6. Fixture operates within water pressure range of 20 to 105 psig. Murdock Manufacturing will not warranty fixtures damaged when connected to supply lines with flow pressure lower than 20 psig or higher than 105 psig. A pressure regulator must be furnished by others on supply line if inlet pressure is greater than 105 psig. **Consult with UPC and local codes for maximum allowable water pressures.**
7. Per UPC 609.10- *All building water supply systems in which quick acting valves are installed shall be provided with devices to absorb the hammer caused by high pressure resulting from the quick closing of the valve. These pressure-absorbing devices shall be approved mechanical devices. Water pressure-absorbing devices will be installed as close as possible to the quick closing valve.*

STANDARD & ALTERNATE WASTE CONFIGURATION BI-LEVEL DRINKING FOUNTAIN



STANDARD WASTE CONFIGURATION



ALTERNATE WASTE CONFIGURATION

PRIOR TO INSTALLATION:

Important: Some options may slightly alter installation including optional Bottle Filler. To ensure proper installation, review the Manual thoroughly and verify rough-ins before beginning work. Leave this Manual with the owner or maintenance personnel upon completion of installation.

- Fixture mounting requirements: Industry standard wall construction, adequate to support the fixture and installer-provided Wall Anchors sufficient to secure the fixture.
- Receptacle(s) must be wired to a GFCI protected circuit. Fixture must be earth grounded per NEC (National Electric Code).
- Inspect fixture and all parts for damage.
- To avoid a hazard due to instability, fixture must be installed in accordance with the instructions.

INSTALLATION:

Choose configuration; Remove and reinstall Filler Plate shown and reverse drain assembly if required for alternate mounting configuration.

1. Mount hanger bracket to wall horizontally level as shown in Roughing-In and Dimensional Drawing. Note: Adjust height of bracket if bubbler outlet height is required to vary from that shown.
WARNING: Hanger Bracket MUST be securely anchored to wall with fasteners sufficient to support 3 times the weight of drinking fountain.
NOTE: If wall cannot provide adequate support, order and install fixture support carrier (by others).
NOTE: If replacing a **competitors Water Cooler** you may be able to use existing mounting bracket.
2. Remove the bottom cover from the drinking fountain and set aside in a safe place. Save the screws in a secure location for re-use in later stages of installation.
3. Hang the drinking fountain on the hanger brackets ensuring the bracket tabs engage AND seat in the slots in the back of the drinking fountain. Verify drinking fountain are level, left to right AND front to back from bottom of unit.
NOTE: The bubbler stream may be adversely affected if units are not square and level. Bottom of units and louvers should be used as reference to verify unit is square and plumb.
4. Anchor the drinking fountain to the wall at the lower mounting points in each back panel. Shim lower mounting points to level unit if necessary.
5. Thoroughly flush the 3/8" O.D. supply line and then connect drinking fountain to water supply angle stop valve (by others) with supplied 3/8" O.D. copper tube.
6. Use supplied flexible hose and clamps to connect waste tailpiece from the upper unit to the waste tailpiece of lower unit and then make up 1-1/4" O.D. p-trap waste connection. Waste p-trap by others.

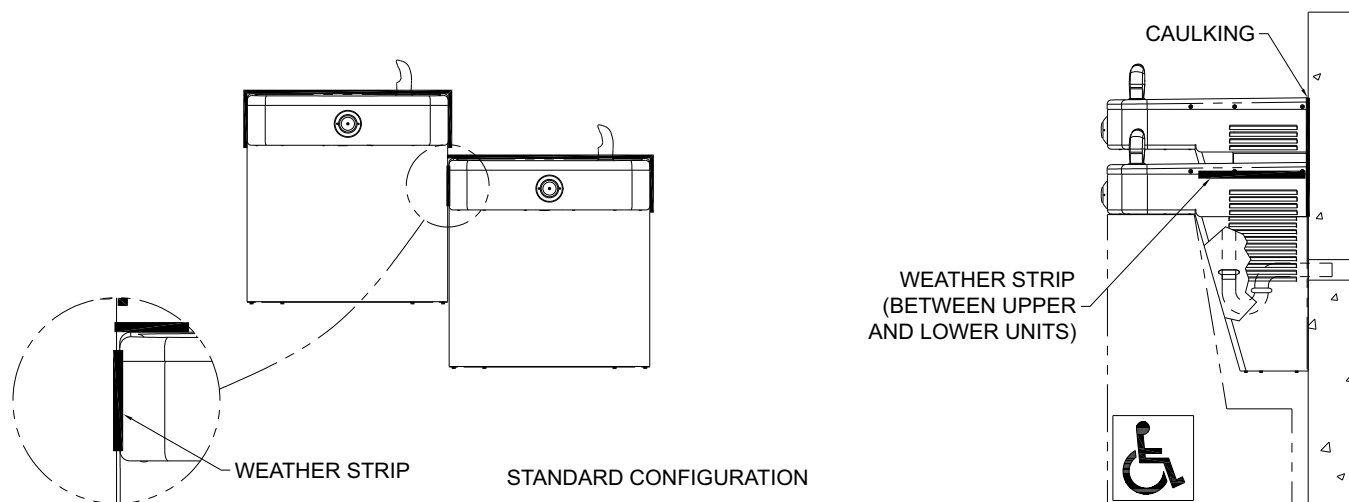
START UP:

1. Before connecting water supply and assembling bottom cover to drinking fountain, but after thoroughly flushing the supply line and connecting it to the fixture, turn on building water supply and check all connections for leaks.
2. Air within the drinking fountain system or the structure supply piping will cause an irregular bubbler outlet stream until purged out by incoming water. Covering the bubbler with a clean cup (or similar object) is recommended when first activating drinking fountain to prevent excessive splashing. Depress the pushbutton until steady water stream is achieved.
3. If water flow requires adjustment, insert a slotted narrow blade screwdriver in the hole centered on the underside of the fixture in the knee clearance area up to the flow regulator. Turning clockwise will increase flow and turning counterclockwise will decrease flow.
4. Recheck all water and drain connections with water flowing through system.
5. **IMPORTANT! Thoroughly, inspect all unit connections for water leaks.**
6. Assemble bottom cover to drinking fountain with screws furnished.

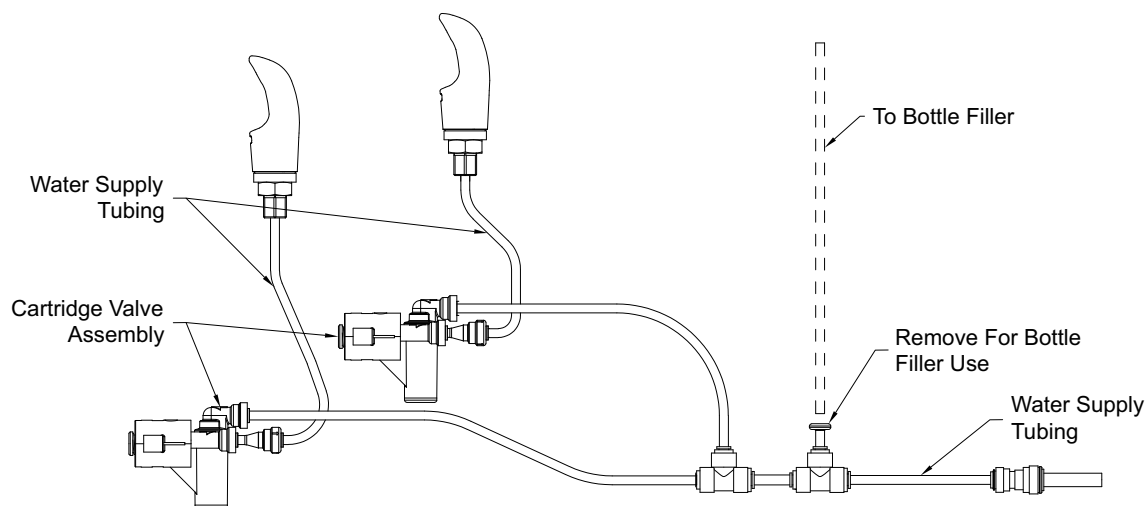
OUTDOOR INSTALLATION INSTRUCTIONS - A172-UG-VR ONLY:

IMPORTANT: Only A172-UG-VR Series, BF11S, BF12S Stn Stl Bottle Fillers are rated for outdoors.

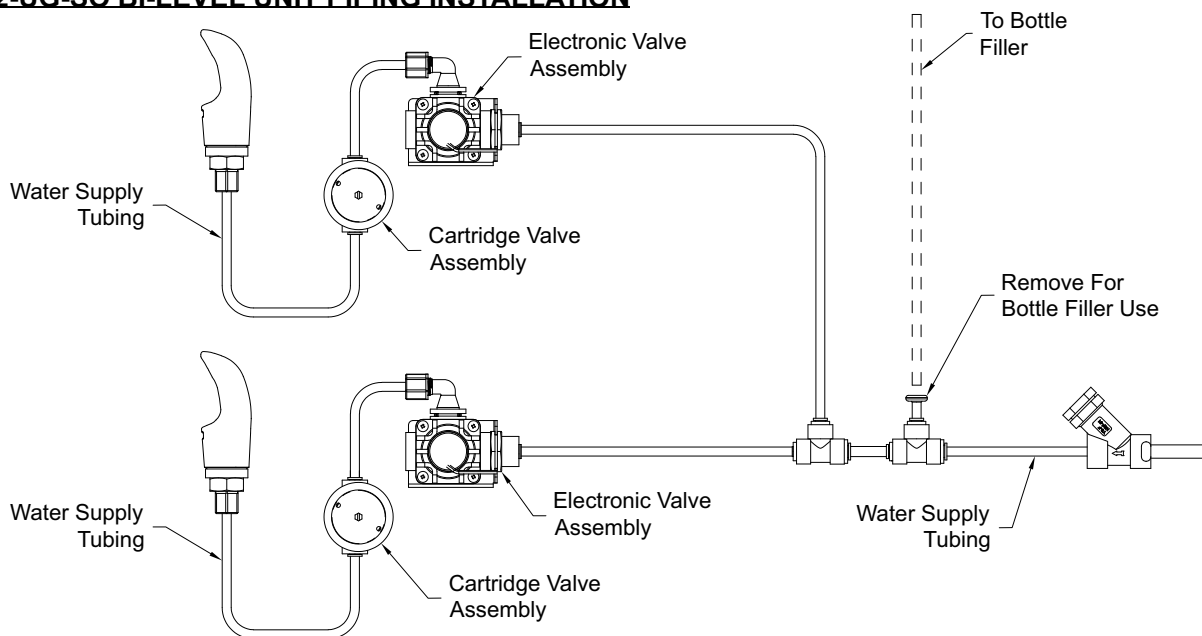
- Units installed outdoors presume average conditions and require adequate protection to prevent exposure to extreme hot or cold temperatures which will affect Warranty.
- Best practices include installation beneath an overhang and avoiding direct sunlight.
- Continual ambient temperatures exceeding 80°F (26.67°C) may cause compressor to wear prematurely.
- Units are not freeze resistant.
- Caulk all around the basin where it contacts the wall and where apron contacts the wall as shown, to reduce the possibility of rain water from leaking into the cabinet. **DO NOT CAULK THE REMOVABLE LOWER ACCESS COVER.**



A172-UG & A172-VR-UG BI-LEVEL UNIT PIPING INSTALLATION (WITH -BF OPTIONS)



A172-UG-SO BI-LEVEL UNIT PIPING INSTALLATION



CLEANING & MAINTENANCE GUIDE:

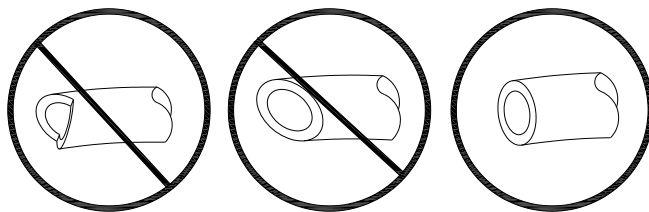
1. Periodically remove access panels and clean out in-line strainer.
2. Do NOT use harsh chemicals, abrasive or petroleum based cleaners. Use of these will void the Acorn warranty.
3. Exterior panels can be cleaned using mild household detergents or warm, soapy water. Extra care must be used cleaning chrome plated items and mirror finished stainless steel. They can scratch easily and should only be cleaned using a clean, soft cloth and mild soap with water or a mild glass cleaner.

PUSH-IN FITTING INSTALLATION

NOTE: FITTINGS AND TUBE SHOULD BE KEPT CLEAN, BAGGED AND UNDAMAGED PRIOR TO INSTALLATION.

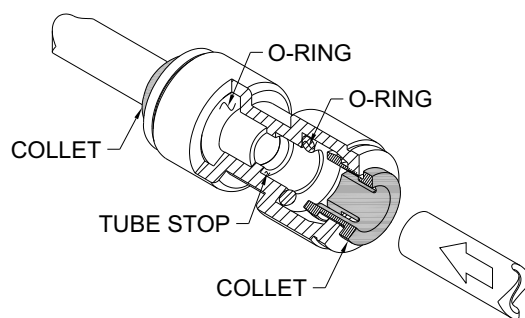
TO CUT TUBE:

Cut to fit length of 1/4" PE tubing and remove any burrs or sharp edges. Ensure that the outside diameter is free from score marks. Tube ends should be square.

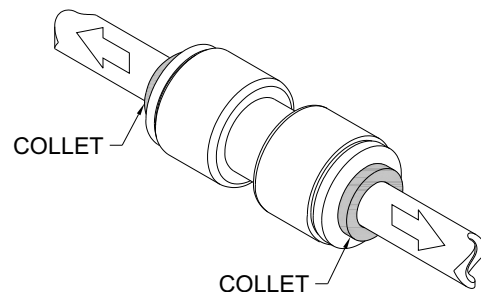


INSERTING THE TUBE:

1. Firmly and fully insert the tubing end into the push-in fitting up to the tube stop located approximately 1/2" deep.

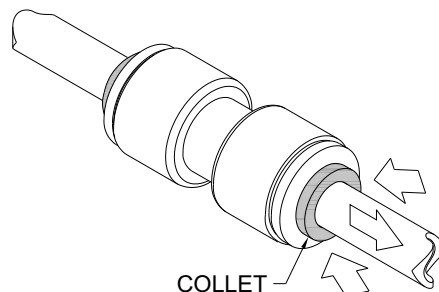


2. Pull on the fitted tubing to ensure it is secure. Tube should not come free from the fitting. Water test the connection assembly prior to leaving the site to ensure there are no leaks.



DISCONNECTING THE TUBE:

To disconnect the tube from the fitting ensure that the water line is depressurized. Push collet square towards the push-in fitting body and hold. While holding the collet in, pull on the PE tubing to remove from the push-in fitting.



OPTIONAL WATER FILTER INSTALLATION:

(Not all Filter options shown below are offered with all units.)

-WF1EZ AND -WF3EZ FILTER (Detail A):

REFER TO INSTALL DETAILS SHIPPED WITH EZ-DOOR® FILTER
[WF1EZ INSTALL LINK](#) [WF3EZ INSTALL LINK](#)

-WF1 FILTER CARTRIDGE INSTALLATION:

WATER FILTER HAS 1500 GALLON CAPACITY, CARTRIDGE WILL REQUIRE REPLACEMENT AFTER 50 HOURS OF ACTUAL OPERATIONAL USAGE. FREQUENCY OF FIXTURE OPERATION WILL DETERMINE TIME FRAME FOR CARTRIDGE REPLACEMENT. (-SO, -SOC, -FG MODELS)

IMPORTANT: FLUSH 3-5 GALLONS OF WATER THROUGH THE FILTER BEFORE INITIAL USE!

- Bubbler run time for approximately 10-15 minutes
- Bottle Filler run time for approximately 3-5 minutes

-WF3000 PFAS FILTER CARTRIDGE INSTALLATION:

FILTER REQUIRES REPLACEMENT AFTER 3000 GALLONS OF USAGE OR (1) YEAR, WHICHEVER OCCURS FIRST.

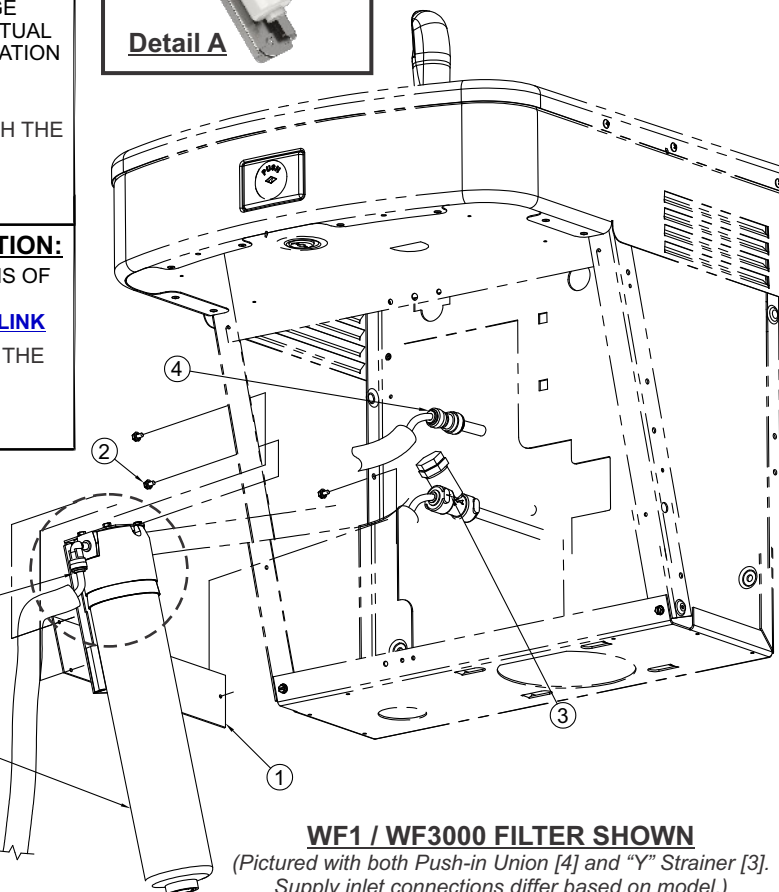
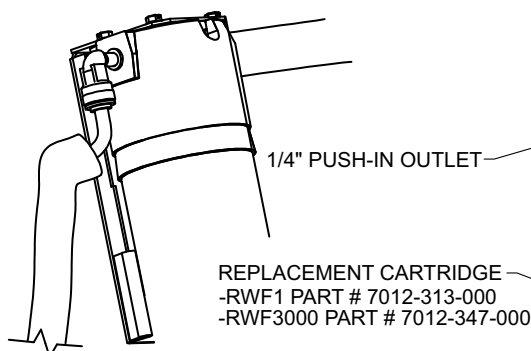
FOR ADDITIONAL DETAILS REFER TO [WF3000 INSTALL LINK](#)

IMPORTANT: FLUSH 6 GALLONS OF WATER THROUGH THE FILTER BEFORE INITIAL USE!

- Bubbler run time for approximately 12 minutes
- Bottle Filler run time for approximately 6 minutes



Detail A



WF1 / WF3000 FILTER SHOWN

(Pictured with both Push-in Union [4] and "Y" Strainer [3].
Supply inlet connections differ based on model.)

-WF1, -WF3000 INSTRUCTIONS:

A- Prepare unit for filter installation:

Remove the bottom housing and turn off unit water supply. If unit is a refrigerated model, disconnect power supply.

B- Assemble filter to fixture mounting bracket: Place filter/bracket assembly [1] on inside of Unit Frame and align holes in the Bracket with the holes of the Unit Frame.

C- Use the screws [2] provided to pass thru the Frame clearance holes and screw into the bracket holes.

D- Chiller unit: Install Filter prior to Evaporator.

Non-Chilled unit: Install Filter prior to Pushbutton.

(Note: "Y" Strainer shown is provided on select models only.)

Follow PE tube from "Y" strainer [3] or Push-in Union [4] to where it connects to the Evaporator (for chiller unit) or to Pushbutton (for non-chilled unit).

Disconnect tube from Evaporator or Pushbutton, connect to Filter inlet Push-in Connection.

Connect new PE tube provided with Filter to Evaporator push-in inlet, where tube was removed. Upon completion filter will be between "Y" Strainer and Evaporator (chiller) or Pushbutton (no chiller).

-WF1, -WF3000 INSTRUCTIONS continued:

F- Turn on water.

CHECK ALL CONNECTIONS FOR LEAKS!

G- IMPORTANT: follow flushing instructions for filter type before allowing fixture use.

H- For refrigerated unit, turn on power supply and check unit for proper operation.

I- Re-install bottom housing.

NOTES:

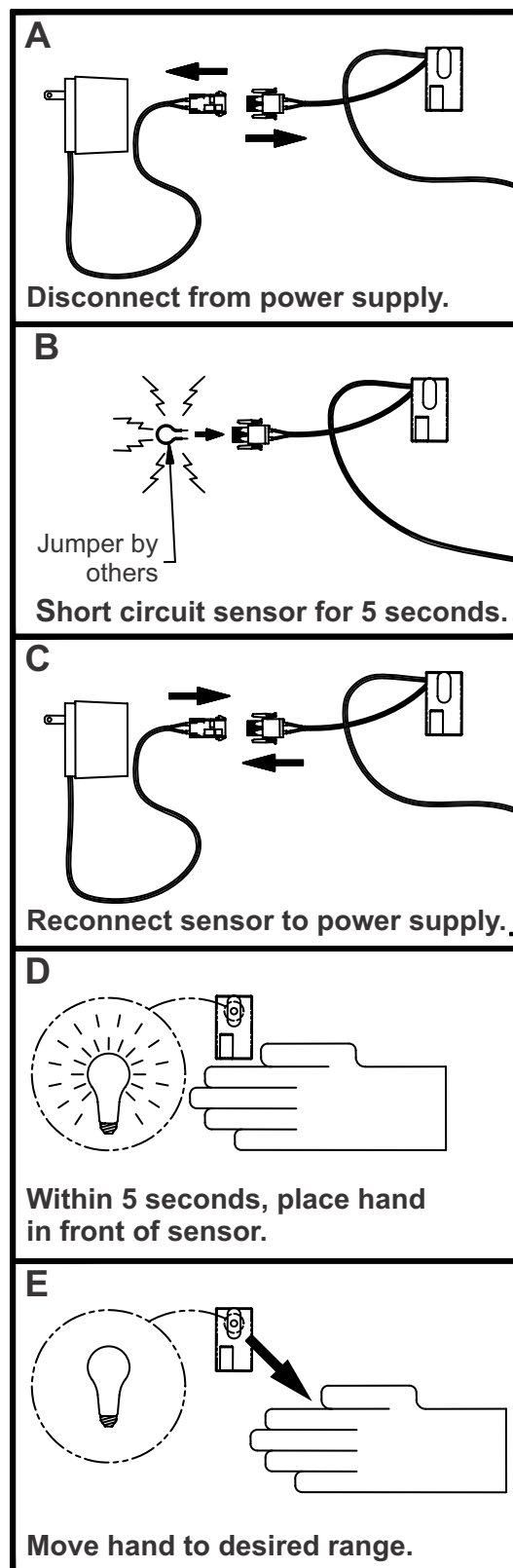
- 1- TO DISCONNECT THE TUBE FROM THE PUSH-IN FITTING TUBE HOLD DOWN GRIPPER AND PULL TUBE OUT SLOWLY.
- 2- TO CONNECT PUSH-IN FITTINGS, PUSH TUBE IN ALL THE WAY TO MAKE A GOOD CONNECTION. CARTRIDGE REPLACEMENT.

FOR A171.8-UG-SO ONLY

SENSOR RANGE ADJUSTMENT

- A. Disconnect sensor from power supply.
- B. Create a short circuit between the positive and negative connections on the sensor for five seconds. **WARNING:** Do NOT create a short circuit on the power supply or while the sensor is connected to the power supply.
- C. Reconnect the sensor to the power supply.
- D. Within 5 seconds of making the connection to the power supply, place and hold hand 2" to 4" in front of sensor.
- E. Once red light within sensor begins flashing quickly, move hand to preferred activation distance and hold there until light stops flashing.

Check sensor activation distance. If unsatisfactory, repeats steps A through E.

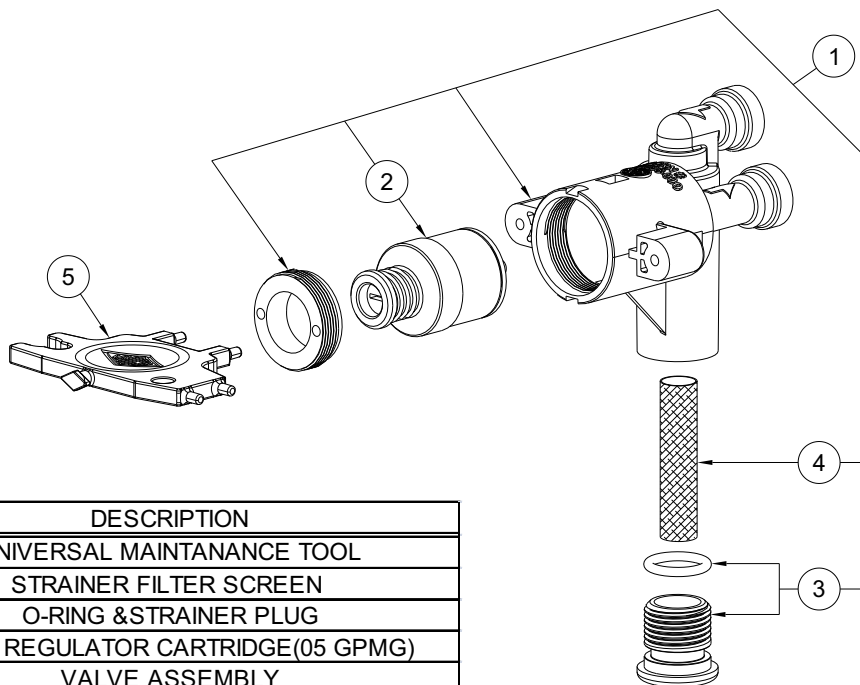


STANDARD CARTRIDGE REPLACEMENT/ STRAINER MAINTENANCE

Note: Use the universal maintenance tool to perform the following:

1. Strainer plug must be removed before cartridge replacement and strainer maintenance (no need to turn the water off at the angle stop). Some residual water will drain during plug removal.
2. Clean strainer as needed using clean water.
3. Cartridge replacement - insert diamond end of the universal tool into push button, rotate 90 degrees and pull firmly to remove the button. Remove cartridge retaining nut . Remove and replace cartridge. When replacing cartridge be sure to align the inlet and outlet ports on the cartridge with the ports in the valve body.

• **NOTE: STRAINER SCREEN MUST BE IN PLACE FOR WATER TO FLOW.**

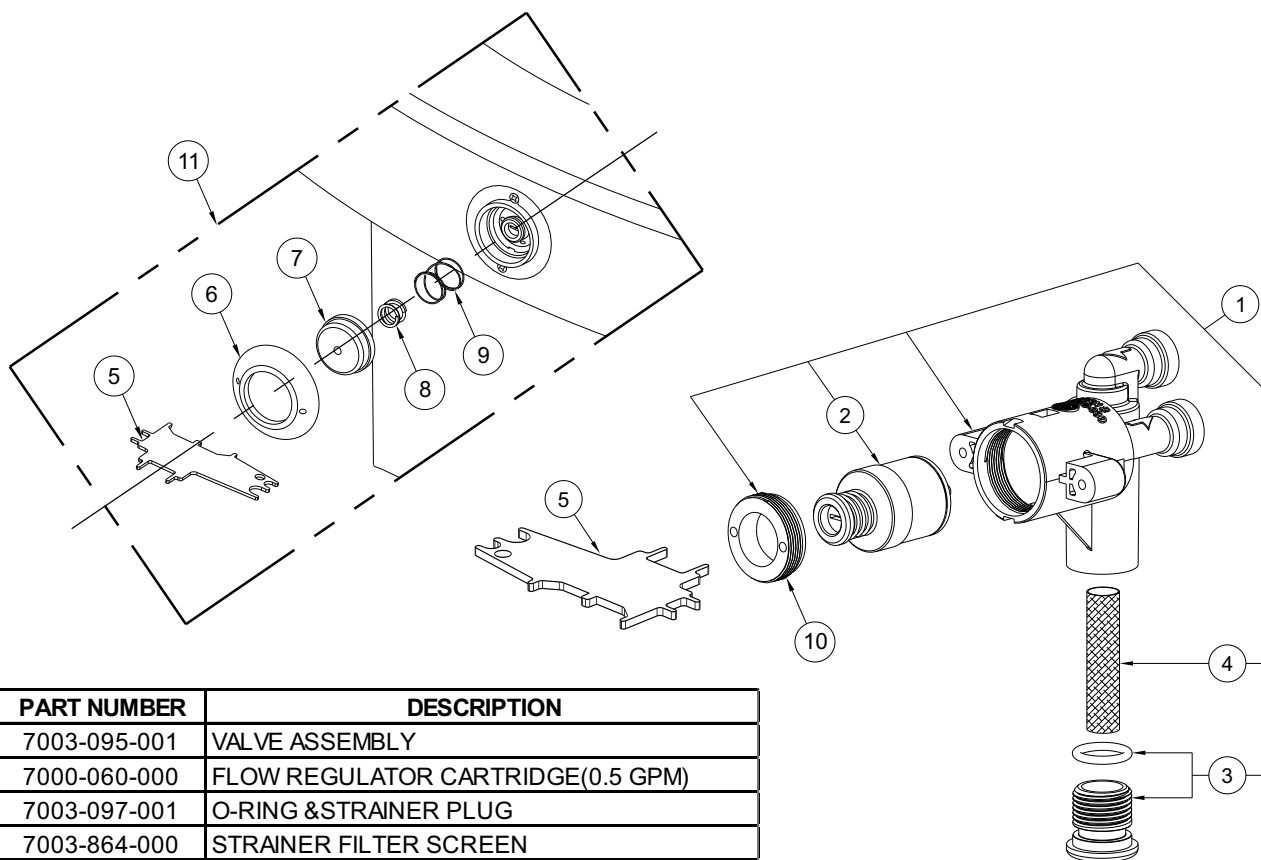


ITEM	PART NUMBER	DESCRIPTION
5	7003-830-000	UNIVERSAL MAINTANANCE TOOL
4	7003-864-000	STRAINER FILTER SCREEN
3	7003-097-001	O-RING & STRAINER PLUG
2	7000-060-000	FLOW REGULATOR CARTRIDGE(05 GPMG)
1	7003-095-001	VALVE ASSEMBLY

-VR VANDAL RESISTANT CARTRIDGE REPLACEMENT/ STRAINER MAINTENANCE

Note: Use the **-VR** maintenance tool to perform the following:

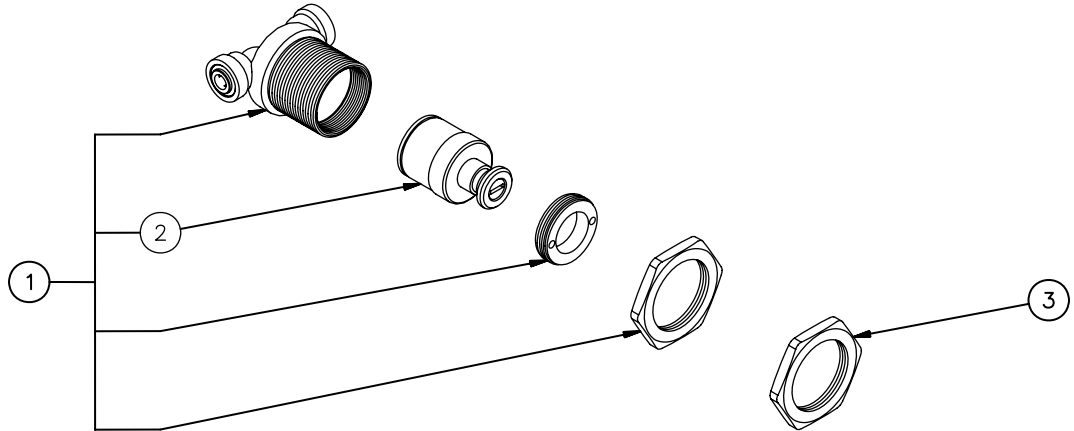
1. Strainer plug (4) **must** be removed before cartridge replacement and strainer maintenance (no need to turn the water off at the angle stop). Some residual water will drain during plug removal.
2. Clean strainer (4) as needed using clean water.
3. Cartridge replacement - Rotate and remove **-VR** pushbutton escutcheon (6) to release pushbutton (7) and springs (8) (9) to access cartridge.
4. Remove cartridge retaining nut (10). Remove and replace cartridge (2). When replacing cartridge be sure to align the inlet and outlet ports on the cartridge with the ports in the valve body.
5. Install item (10) using maintenance tool (5) (Be careful not to over tighten)
6. Install button assembly items (6) (7) (8) (9) using maintenance tool (5). Insure springs are installed in button correctly.
7. Reinstall strainer (4) and plug (3) using maintenance tool (5).



ITEM	PART NUMBER	DESCRIPTION
1	7003-095-001	VALVE ASSEMBLY
2	7000-060-000	FLOW REGULATOR CARTRIDGE(0.5 GPM)
3	7003-097-001	O-RING & STRAINER PLUG
4	7003-864-000	STRAINER FILTER SCREEN
5	7003-194-199	(-VR) MAINTENANCE TOOL
6	7003-197-199	(-VR) PUSHBUTTON ESCUTCHEON, CHROME
7	7003-196-199	(-VR) PUSHBUTTON, CHROME
8	7003-195-000	(-VR) PUSHBUTTON OVERTRAVEL SPRING
9	7003-193-000	(-VR) PUSHBUTTON RETURN SPRING
10	7000-052-000	RETAINING NUT
11	7003-099-001	(-VR) PUSHBUTTON ASSY - ITEMS #5 THRU #9

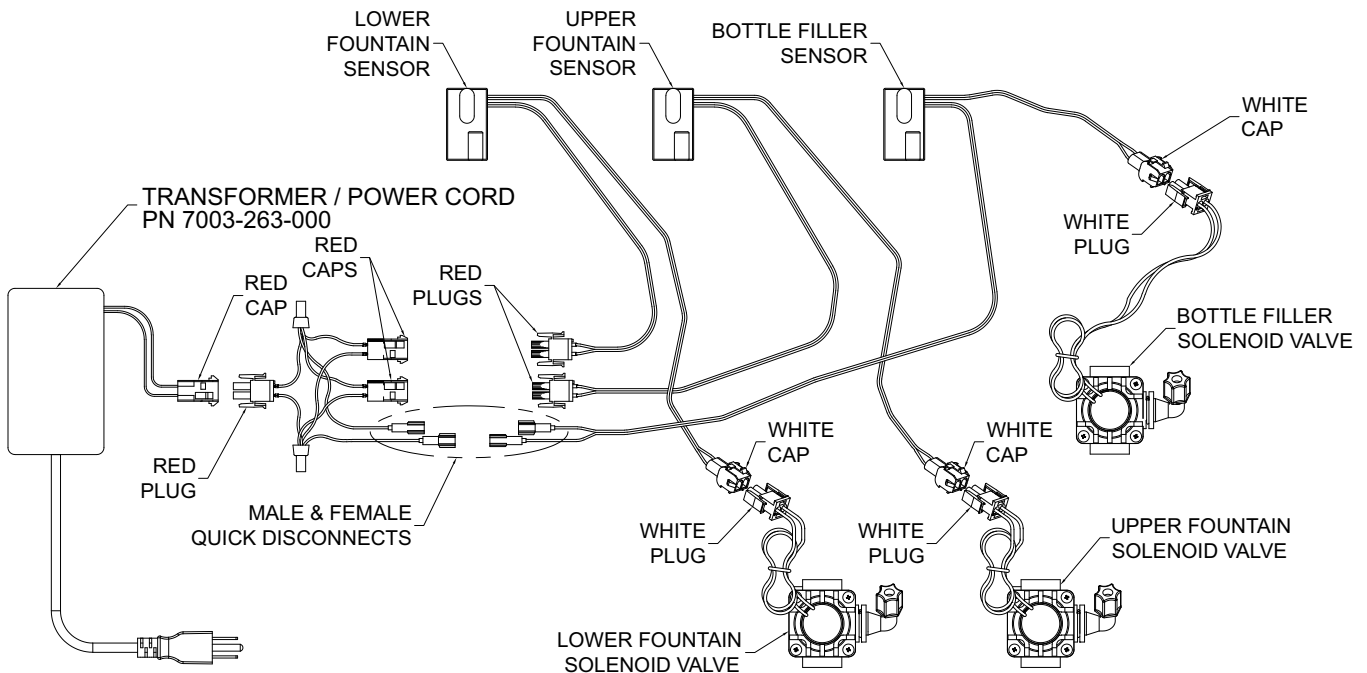
**NOTE: STRAINER FILTER SCREEN
MUST BE IN PLACE FOR
WATER TO FLOW.**

-SO SENSOR OPERATED CARTRIDGE VALVE PARTS BREAKDOWN



ITEM #	PART NUMBER	DESCRIPTION
1	7000-050-001	Valve Cartridge Assembly
2	7000-060-000	Valve Cartridge
3	7000-053-199	Jam Nut

-SO SENSOR OPERATED WIRING DIAGRAM WITH -BF12, BF12S

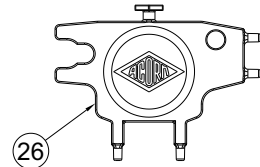
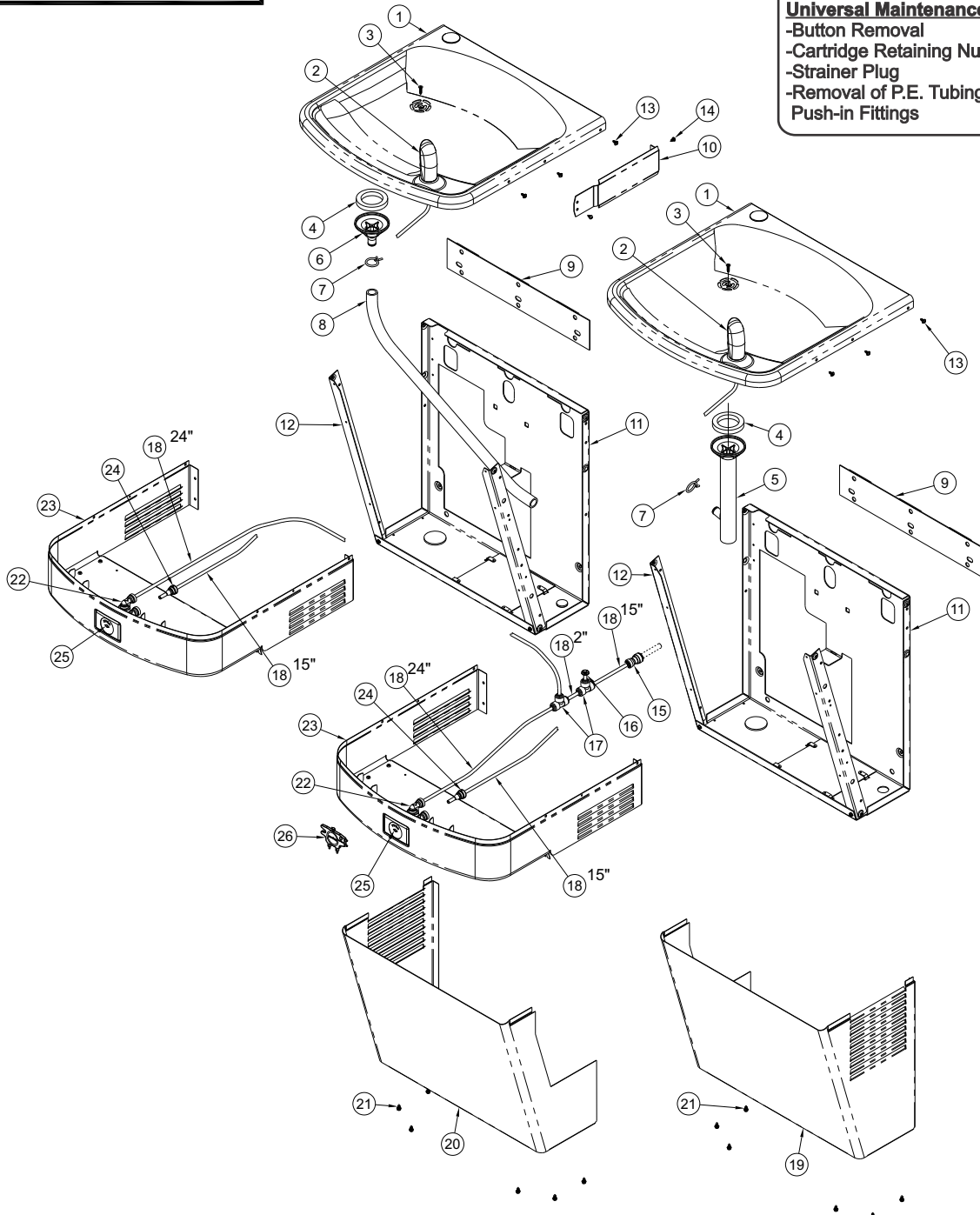


A172-UG DRINKING FOUNTAIN PARTS BREAKDOWN

NOTE: See following page for fixture drawing corresponding to table of parts below.

NOTE:

** Flow Restrictor Only Available
With Low Flow Bubbler.



Universal Maintenance Tool

- Button Removal
- Cartridge Retaining Nut
- Strainer Plug
- Removal of P.E. Tubing from Push-in Fittings

A172-UG DRINKING FOUNTAIN PARTS BREAKDOWN TABLE

NOTE: See previous page for fixture drawing corresponding to table of parts below.

<u>ITEM#</u>	<u>PART NUMBER</u>	<u>DESCRIPTION</u>
1	7003-161-001	BASIN TOP w/ PLUG
2	7000-099-002	STANDARD FLEXIBLE BUBBLER ASSEMBLY
	7000-012-001	LEAD -FREE STAINLESS STEEL BUBBLER ASSEMBLY
3	0124-008-000	#8 x 3/4" LG FLAT HD SELF TAPPING TORX C/R SCREW
4	7000-006-000	FLAT DRAIN GASKET
5	7003-181-000	DRAIN TAILPIECE (LONG)
6	7003-180-000	DRAIN ADAPTER
7	7003-184-000	7/8" SPRING CLAMP
8	7003-183-199	DRAIN HOSE
9	7003-950-199	HANGER BRACKET
10	7003-956-020	FILLER PLATE - GRAY
	7003-825-199	FILLER PLATE - STAINLESS STEEL
11	7003-900-199	BACK PANEL
12	7003-007-199	SUPPORT STRUT
13	0124-036-000	#8 x 1/2" LONG TORX ROUND HEAD C/R SCREW
14	0124-050-000	#8 x 3/8" LONG PHILLIPS PAN HEAD SCREW
15	1895-123-000	1/4" x 3/8" O.D. PUSH-IN SUPPLY INLET CONNECTION
16	1895-715-000	1/4" PLUG
17	1895-710-000	1/4" x 3/8" O.D. TUBE UNION TEE (PUSH-IN)
18	2169-000-000	1/4" O.D. PE TUBING (BLUE)
19	7003-955-020	RIGHT CABINET - GRAY
	7003-824-299	RIGHT CABINET - STAINLESS STEEL
20	7003-954-020	LEFT CABINET - GRAY
	7003-823-299	LEFT CABINET - STAINLESS STEEL
21	0124-031-000	#8x3/8" LONG SLOTTED HEX WASHER HEAD SCREW
22	7003-095-001	VALVE ASSEMBLY
23	7003-953-002	APRON ASSEMBLY - GRAY
	7003-826-002	APRON ASSEMBLY - STAINLESS STEEL
24	7003-093-001	FLOW RESTRICTOR - LOW-FLOW BUBBLER ONLY
25	7003-099-000	PUSHBUTTON
26	7003-830-000	UNIVERSAL MAINTENANCE TOOL

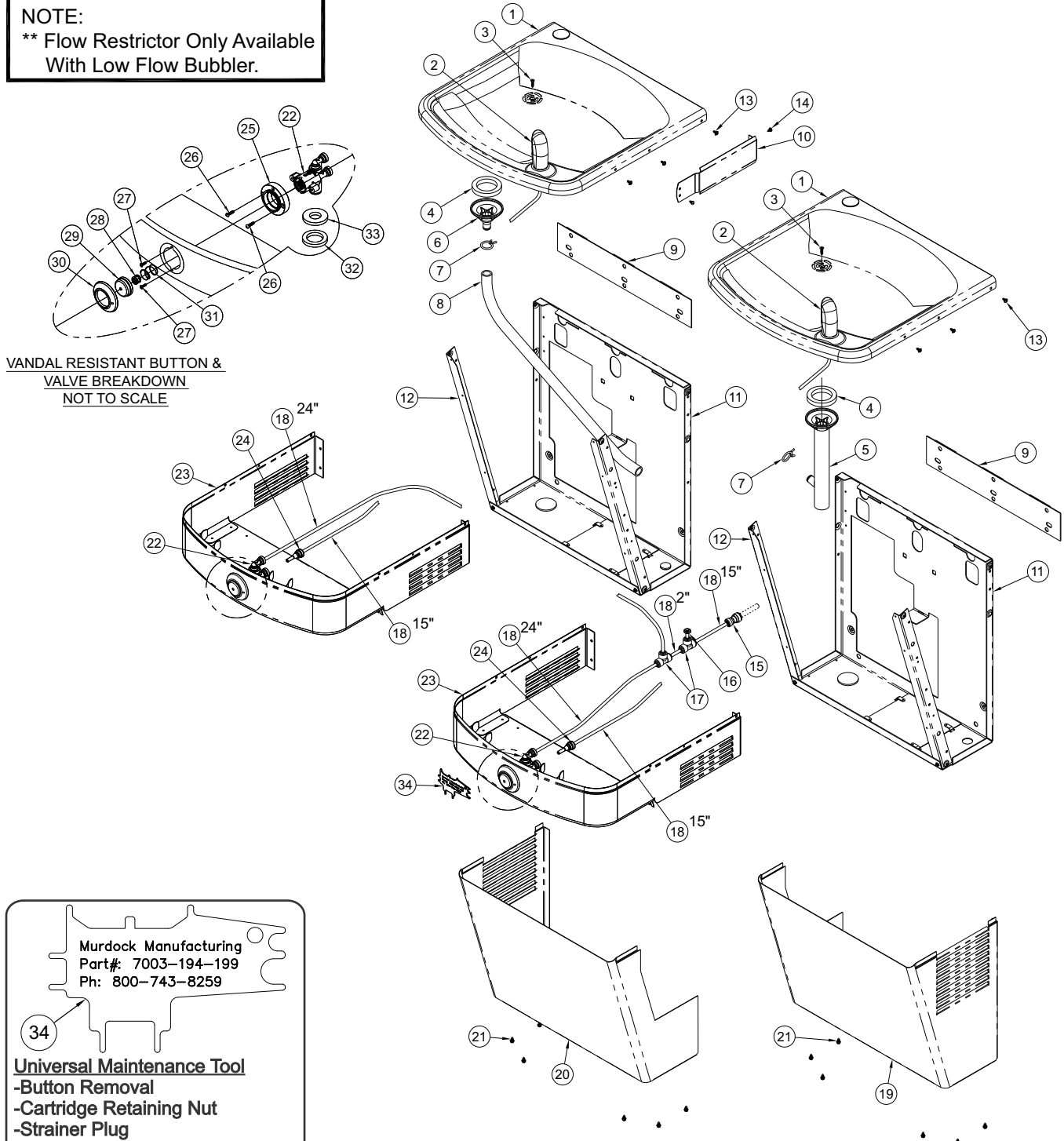
Repairs must be made with Murdock Manufacturing parts only. Please order through your local representative or distributor.

A172-UG-VR DRINKING FOUNTAIN PARTS BREAKDOWN

NOTE: See following page for fixture drawing corresponding to table of parts below.

NOTE:

** Flow Restrictor Only Available
With Low Flow Bubbler.



Murdock Manufacturing
Part#: 7003-194-199
Ph: 800-743-8259

Universal Maintenance Tool

- Button Removal
- Cartridge Retaining Nut
- Strainer Plug
- Removal of P.E. Tubing
from Push-in Fittings

A172-UG-VR DRINKING FOUNTAIN PARTS BREAKDOWN TABLE

NOTE: See previous page for fixture drawing corresponding to table of parts below.

ITEM#	PART NUMBER	DESCRIPTION
1	7003-161-001	BASIN TOP w/ PLUG
2	7000-099-002	STANDARD FLEXIBLE BUBBLER ASSEMBLY
	7000-012-001	LEAD -FREE STAINLESS STEEL BUBBLER ASSEMBLY
3	0124-008-000	#8 x 3/4" LG FLAT HD SELF TAPPING TORX C/R SCREW
4	7000-008-000	FLAT DRAIN GASKET
5	7003-181-000	DRAIN TAILPIECE (LONG)
6	7003-180-000	DRAIN ADAPTER
7	7003-184-000	7/8" SPRING CLAMP
8	7003-183-199	DRAIN HOSE
9	7003-950-199	HANGER BRACKET
10	7003-956-020	FILLER PLATE - GRAY
	7003-825-199	FILLER PLATE - STAINLESS STEEL
11	7003-900-199	BACK PANEL
12	7003-007-199	SUPPORT STRUT
13	0124-036-000	#8 x 1/2" LONG TORX ROUND HEAD C/R SCREW
14	0124-050-000	#8 x 3/8" LONG PHILLIPS PAN HEAD SCREW
15	1895-123-000	1/4" x 3/8" O.D. PUSH-IN SUPPLY INLET CONNECTION
16	1895-715-000	1/4" PLUG
17	1895-710-000	1/4" x 3/8" O.D. TUBE UNION TEE (PUSH-IN)
18	2169-000-000	1/4" O.D. PE TUBING (BLUE)
19	7003-955-020	RIGHT CABINET - GRAY
	7003-824-299	RIGHT CABINET - STAINLESS STEEL
20	7003-954-020	LEFT CABINET - GRAY
	7003-823-299	LEFT CABINET - STAINLESS STEEL
21	0124-031-000	#8 x 3/8" LONG SLOTTED HEX WASHER HEAD SCREW
22	7003-095-001	VALVE ASSEMBLY
23	7003-952-021	APRON ASSEMBLY - GRAY
	7003-211-004	APRON ASSEMBLY - STAINLESS STEEL
24	7003-093-001	FLOW RESTRICTOR - LOW-FLOW BUBBLER ONLY
25	7003-198-199	(-VR) PUSHBUTTON MOUNTING SLEEVE
26	0124-055-000	#8 x 3/4" LONG PHILLIPS ROUND HEAD SCREW
27	0161-062-000	#6-32 x 1/2" LONG PHILLIPS ROUND HEAD SCREW
28	7003-195-000	(-VR) PUSHBUTTON OVERTRAVEL SPRING
29	7003-196-199	(-VR) PUSHBUTTON, CHROME
30	7003-197-199	(-VR) PUSHBUTTON ESCUTCHEON, CHROME
31	7003-193-000	(-VR) PUSHBUTTON RETURN SPRING
32	7003-200-000	AUTO-STOP CONDESATION GASKET, LOWER
33	7003-199-000	AUTO-STOP CONDESATION GASKET, UPPER
34	7003-830-000	UNIVERSAL MAINTENANCE TOOL

Repairs must be made with Murdock Manufacturing parts only. Please order through your local representative or distributor.

DRINKING FOUNTAIN

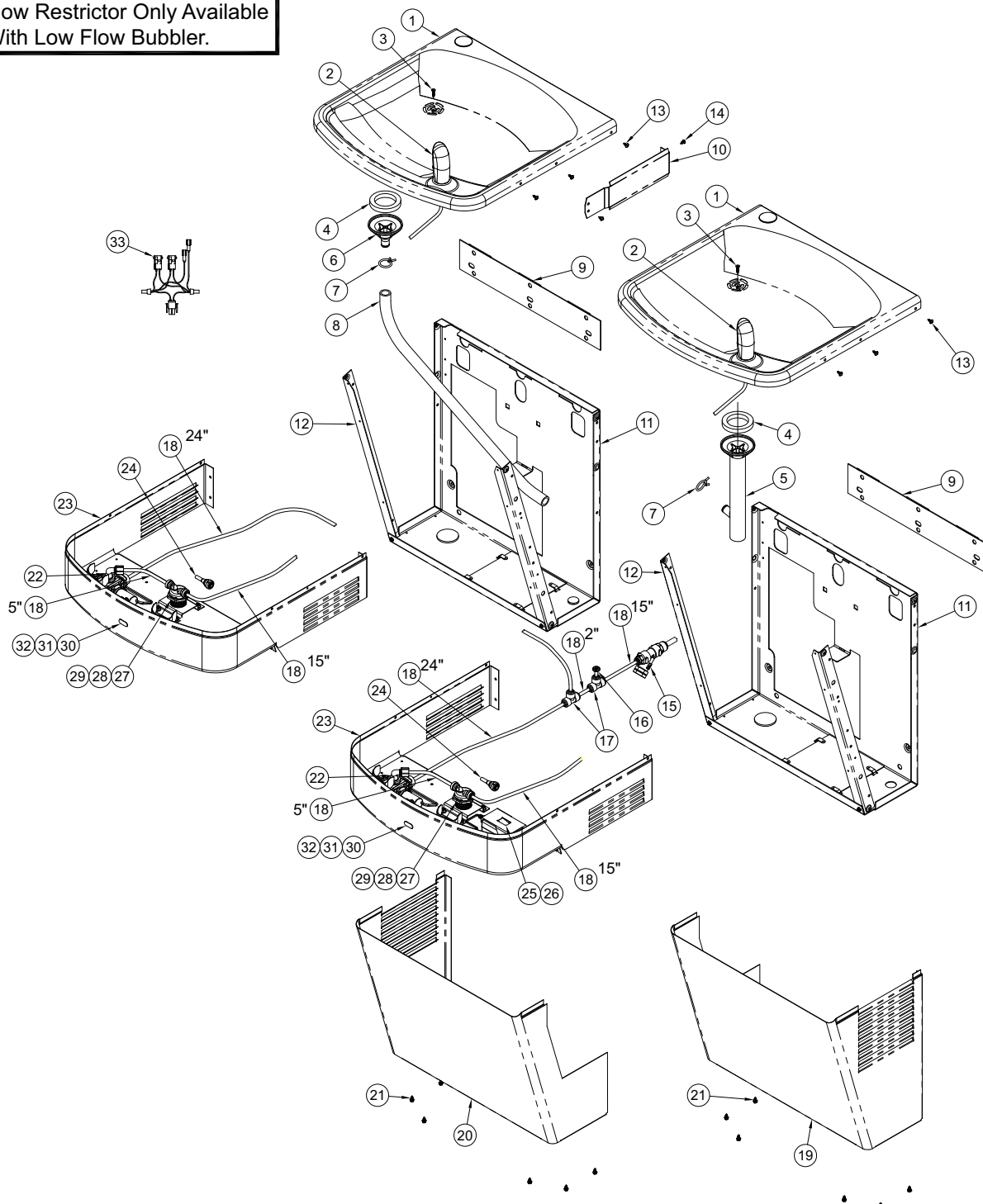
INSTALLATION/MAINTENANCE INSTRUCTIONS

A172-UG-SO DRINKING FOUNTAIN PARTS BREAKDOWN

NOTE: See following page for fixture drawing corresponding to table of parts below.

NOTE:

**** Flow Restrictor Only Available
With Low Flow Bubbler.**



A172-UG-SO DRINKING FOUNTAIN PARTS BREAKDOWN TABLE

NOTE: See previous page for fixture drawing corresponding to table of parts below.

ITEM#	PART NUMBER	DESCRIPTION
1	7003-161-001	BASIN TOP w/ PLUG
2	7000-099-002	STANDARD FLEXIBLE BUBBLER ASSEMBLY
	7000-012-001	LEAD -FREE STAINLESS STEEL BUBBLER ASSEMBLY
3	0124-008-000	#8 x 3/4" LG FLAT HD SELF TAPPING TORX C/R SCREW
4	7000-006-000	FLAT DRAIN GASKET
5	7003-181-000	DRAIN TAILPIECE (LONG)
6	7003-180-000	DRAIN ADAPTER
7	7003-184-000	7/8" SPRING CLAMP
8	7003-183-199	DRAIN HOSE
9	7003-950-199	HANGER BRACKET
10	7003-956-020	FILLER PLATE - GRAY
	7003-825-199	FILLER PLATE - STAINLESS STEEL
11	7003-900-199	BACK PANEL
12	7003-007-199	SUPPORT STRUT
13	0124-036-000	#8 x 1/2" LONG TORX ROUND HEAD C/R SCREW
14	0124-050-000	#8 x 3/8" LONG PHILLIPS PAN HEAD SCREW
15	7000-021-002	"Y" STRAINER ASSEMBLY 3/8" O.D. x 1/4" O.D.
16	1895-715-000	1/4" PLUG
17	1895-710-000	1/4" x 3/8" O.D. TUBE UNION TEE (PUSH-IN)
18	2169-000-000	1/4" O.D. PE TUBING (BLUE)
19	7003-955-020	RIGHT CABINET - GRAY
	7003-824-299	RIGHT CABINET - STAINLESS STEEL
20	7003-954-020	LEFT CABINET - GRAY
	7003-823-299	LEFT CABINET - STAINLESS STEEL
21	0124-031-000	#8 x 3/8" LONG SLOTTED HEX WASHER HEAD SCREW
22	7003-095-001	VALVE ASSEMBLY
23	7003-922-020	APRON ASSEMBLY - GRAY
	7003-826-005	APRON ASSEMBLY - STAINLESS STEEL
24	7003-093-001	FLOW RESTRICTOR - LOW-FLOW BUBBLER ONLY
25	0711-407-001	240VAC / 9VDC TRANSFORMER
26	7003-028-199	TRANSFORMER BRACKET
27	7000-050-001	VALVE CARTRIDGE
28	7000-060-000	FLOW REGULATOR CARTRIDGE (0.5 GPM)
29	7003-023-199	CARTRIDGE MOUNTING BRACKET (SENSOR OP)
30	2563-385-002	NANO SENSOR ASSEMBLY
31	7003-029-199	SENSOR BRACKET
32	7001-200-199	SOLENOID VALVE MOUNTING BRACKET
33	0711-451-001	3 STATION 9VAC WIRING HARNESS

Repairs must be made with Murdock Manufacturing parts only. Please order through your local representative or distributor.