



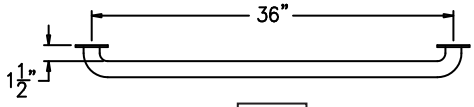
RESTROOM ACCESSORIES

1133

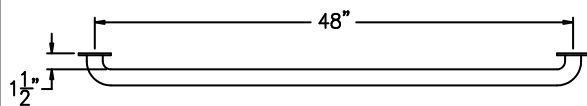
**MURDOCK-
SUPER
SECUR
RESTROOM
ACCESSORIES**

**MODEL #
1133 SERIES**

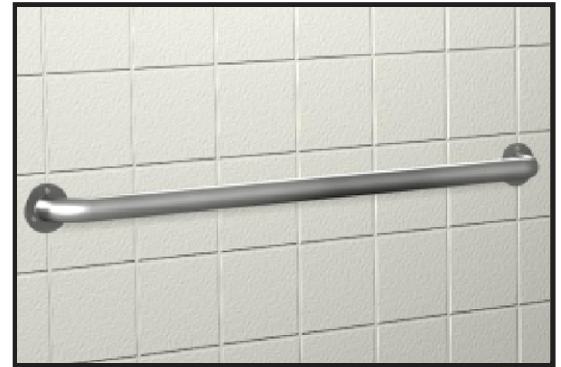
GRAB BARS



1133

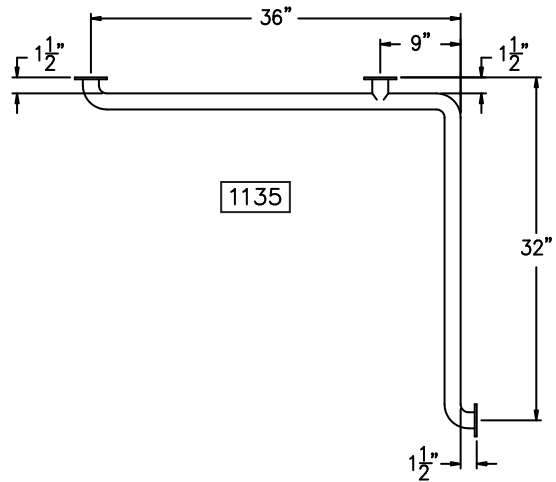
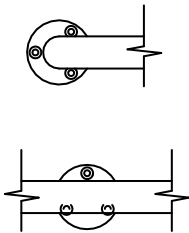


1134



Note: Fixture may show some available options

FLANGE DETAILS



1135

TECHNICAL DATA:

1133 grab bar is 36" long.

1134 grab bar is 48" long.

1135 two-wall grab bar for shower stalls is 36" by 32".

All Grab Bars are 1-1/2" diameter satin finish stainless steel and have 1-1/2" clearance to wall. Grab bars are designed to support a load of at least 250 pounds.

Mount grab bars at 33" above floor or in accordance with local regulations. Ends of grab bars should be no more than 6" from the corner of the stall. Each flange has three holes for fasteners, which are provided.

MODEL NUMBER:

- 1133 36" Grab Bar (for behind toilet)
- 1134 48" Grab Bar (at side of toilet)
- 1135 36" x 32" Two Wall Grab Bar

⚠ WARNING: Cancer and Reproductive Harm - www.P65Warnings.ca.gov

**SELECTION SUMMARY
& APPROVAL FOR
MANUFACTURING**

Model Number & Options _____ Quantity _____

Company _____

Contact _____ Title _____

Signature _____ Date _____
(Approval for Manufacturing)

All dimensions are nominal and subject to change without notice. Murdock-Super Secur assumes no responsibility for use of void or superseded data. Murdock Mfg.™, Member of Morris Group International™. Please visit www.murdockmfg.com for most current specifications.