



DRINKING FOUNTAIN

A132 Series

MODEL A132400S

BARRIER FREE, BI-LEVEL,
WALL MOUNTED DRINKING FOUNTAIN
WITH 32" TRIM PANEL

STANDARD FEATURES

- Child or Adult ADA Compliant (when properly installed)
- 18 gage, 304 stainless steel
- Polished stainless steel, anti-rotation, non-squirt bubbler
- 100 mesh inlet strainer
- Vandal resistant screws
- P-trap
- Mounting plate with hardware
- 32 inch trim panel



Model A132400B-RBL Shown
** U.S. DESIGN PATENT D545,607 (Bowl Design)

SUGGESTED SPECIFICATIONS

Model A132400S is a wall mounted, bi-level drinking fountain made from 18 gage, 304 stainless steel with a brushed finish. Unit shall be activated by self-closing, frontal push pads, by using less than 5 pounds of force, which activates internally mounted valves with adjustable stream regulators controlling the water flow. Bubblers shall be polished stainless steel with non-squirt features and operate on a water pressure range of 20-105 psig. Unit shall have a uniquely designed, two-piece contoured bowls with P-traps integral to the unit. Unit is certified to ANSI A117.1, Public Law 111-380 (NO-LEAD), CHSC 116875 and NSF/ANSI 61, Section 9. Fixture meets ADA, ADA Standing Person, and ADA Child requirements when mounted appropriately.

MODEL:

(Must Specify)

FLEXIBLE BUBBLER (LOW FLOW)

- A132200F Bronze Finish
- A132300F Gold Finish (High Polish)
- A132400F Satin stainless Finish

LEAD-FREE STAINLESS STEEL BUBBLER

- A132200S Bronze Finish
- A132300S Gold Finish (High Polish)
- A132400S Satin stainless Finish (Shown)

OPTIONS

(additional costs may be incurred)

- AP3 Access panel for a dual fountain
(Must select -MF8)
- W32-CSC Concealed support carrier
- FRA4 Freeze resistant valve system
- HP High polished stainless steel
- MF8 Mounting frame for a dual fountain
- RBL Reverse bi-level
- SK4 Skirt kit, stainless steel, for upper unit
- WF1 1500 gallon capacity, NSF 42+53,
1 micron lead reduction filter

Complies with the following standards:



Federal Public Law 111-380 (No Lead)



Member of U.S. Green Building Council



Recyclable Product



Water Conserving Product

WARNING: Cancer and Reproductive Harm - www.P65Warnings.ca.gov

MURDOCK MFG. • 15125 Proctor Avenue • City of Industry, CA 91746 USA
Phone 800-453-7465 or 626-333-2543 • Fax 626-855-4860 • www.murdockmfg.com

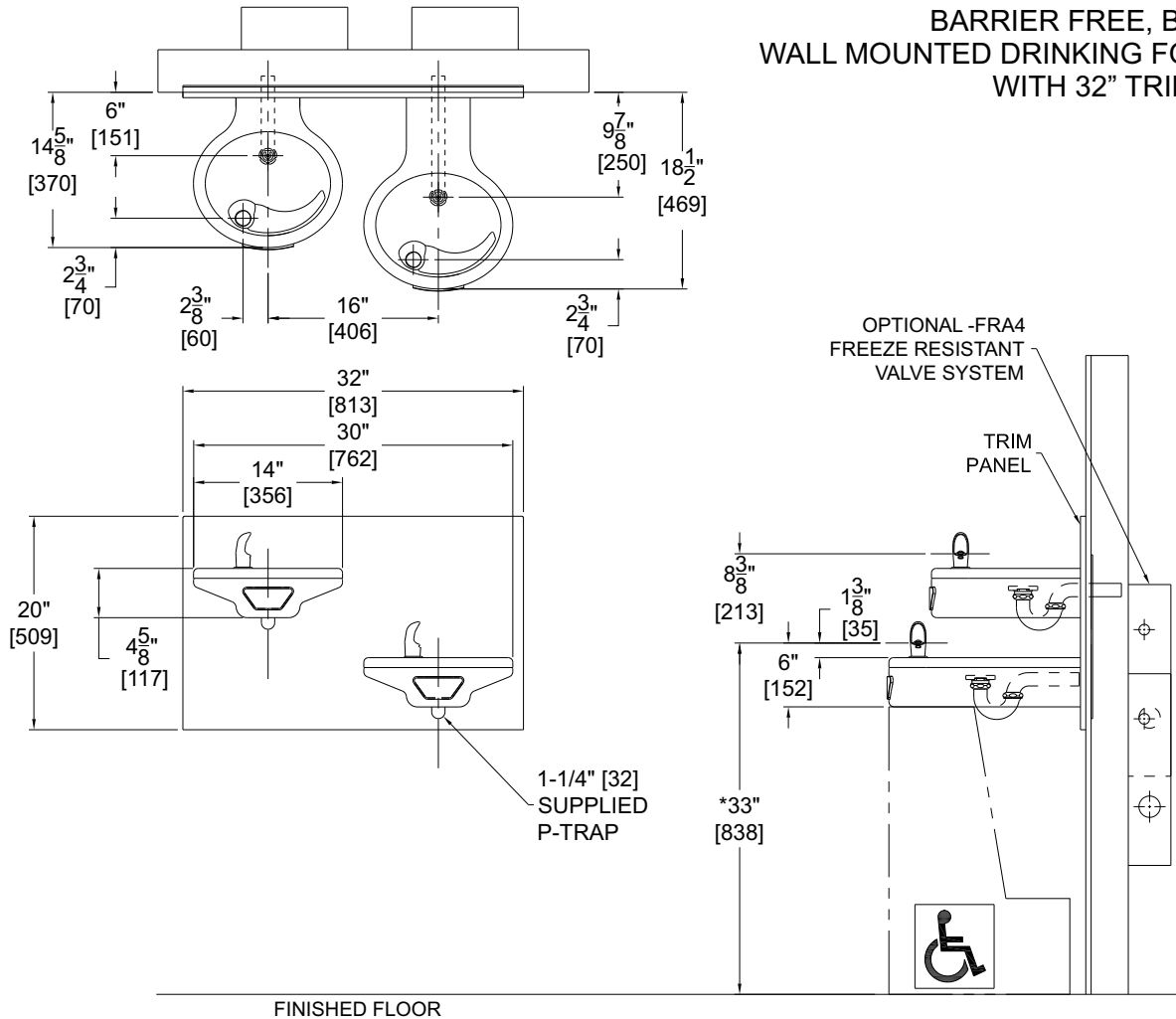
Member of MORRIS GROUP INTERNATIONAL



DRINKING FOUNTAIN

A132 Series MODEL A132400S

BARRIER FREE, BI-LEVEL,
WALL MOUNTED DRINKING FOUNTAIN
WITH 32" TRIM PANEL



GENERAL NOTES:

1. ALL DIMENSIONS ARE IN INCHES [MM].
- *2. DIMENSIONS SHOWN ARE FOR RECOMMENDED ADULT HEIGHT. ADJUST VERTICAL DIMENSIONS AS NECESSARY TO COMPLY WITH FEDERAL, STATE, & LOCAL CODES.

Murdock Mfg.™ warrants that its products are free from defects in material or workmanship under normal use and service for a period of one year from date of shipment. Murdock's liability under this warranty shall be discharged solely by replacement or repair of defective material, provided Murdock™ is notified in writing within one year from date of shipment, F.O.B. Industry, California.

SELECTION SUMMARY & APPROVAL FOR MANUFACTURING	Model Number & Options _____	Quantity _____	All dimensions are subject to manufactures tolerance of plus or minus 1/2" nominal and subject to change without notice. Murdock assumes no responsibility for use of void or superseded data. Dimensions may change with the addition of optional accessories. Murdock Mfg.™, Member of Morris Group International™. Please visit www.murdockmfg.com for most current specifications.
	Company _____		
	Contact _____	Title _____	
	Signature (Approval for Manufacturing) _____	Date _____	

MURDOCK MFG. • 15125 Proctor Avenue • City of Industry, CA 91746 USA
Phone 800-453-7465 or 626-333-2543 • Fax 626-855-4860 • www.murdockmfg.com

Member of
MORRIS GROUP
INTERNATIONAL